

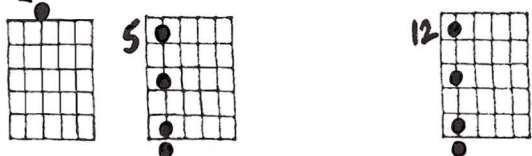
Different Tonalities in D

Ted Greene
1995-12-27
1996-01-15

Important: Sing (or at least play) all of these descending.

All these have the D open string going.

MAJOR



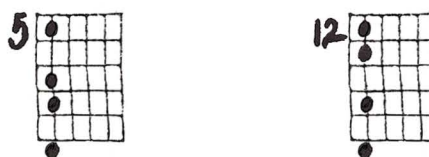
MIXOLYDIAN (b7)



DORIAN (b3, b7)



AEOLIAN (b3, b6, b7)



PHRYGIAN (b2, b3, b6, b7)



GYPSY DOMINANT (b2, b6, b7)



GYPSY MAJOR (b2, b6)

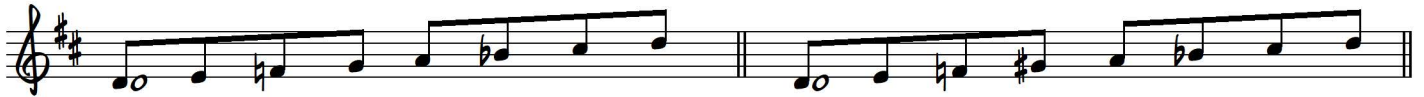
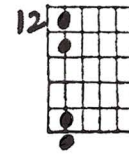
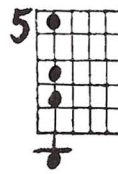
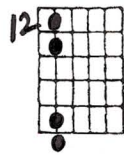
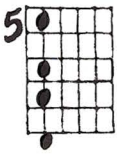


GYPSY BLUES (b2, b3, b3, no 4, [b6, b7])



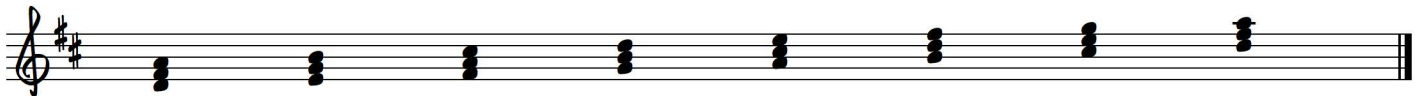
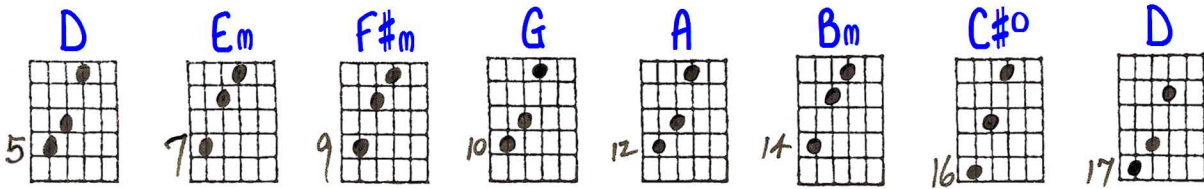
HARMONIC MINOR (b3, b6)
("tamer" Gypsy minor)

HUNGARIAN MINOR (b3, #4, b6)
("serious" Gypsy minor)



Tonic (or Root) = The first note or chord in any scale.

Chords are built from scales by firstly combining "every other" note.
Example: in the 1) major scale using 3-note chords, you would get:



These are known as "TRIADS."

Triads are built by stacking large or small (or very occasionally extra large or extra small) 3rds on top of each other.

The Four Common Triads are:

small > = MAJOR
large >

large > = MINOR
small >

small > = DIMINISHED
small >

large > = AUGMENTED
large >

Different Tonalties in D

12-27-95

VERY IMPORTANT - SING (or at least play) **ALL** of these **DESCENDING**

ALL THESE HAVE THE D OPEN STRING GOING

b3 = MINOR

Grids for various scales and chords:

- MINOR
- MIXOLYDIAN
- DOMINANT
- NEOLIAN
- GYPSY DOMINANT
- GYPSY MAJOR
- GYPSY BLUES
- HARMONIC MINOR
- PAKISTANI
- HUNGARIAN MINOR
- GYPSY MINOR

Root = The 1st note or chord in any scale

Chords are built from scales by **firstly combining every other note**. Ex. in the D MAJOR SCALE using 3 note chords you would get

These are known as **TRIADS**. Triads are built by stacking large² or small (or both) on top of each other. The **FOUR** COMMON TRIADS are:

- LARGE > SMALL = MAJOR
- LARGE > SMALL > SMALL = MINOR
- SMALL > SMALL = DIMINISHED
- LARGE > LARGE = AUGMENTED

Grids for various triads:

- MAJOR
- MINOR
- DIMINISHED
- AUGMENTED