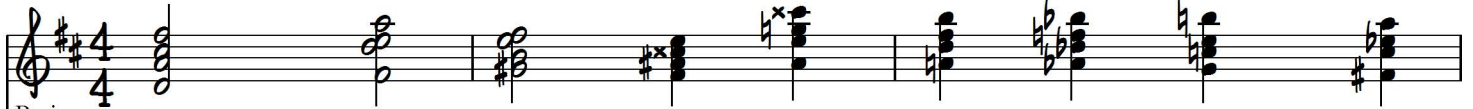
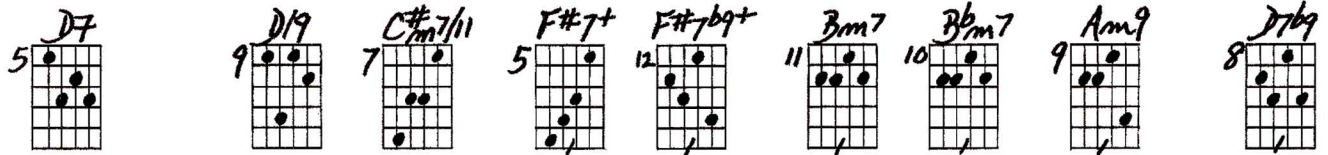


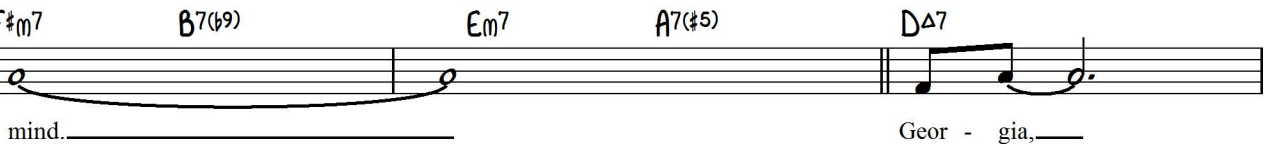
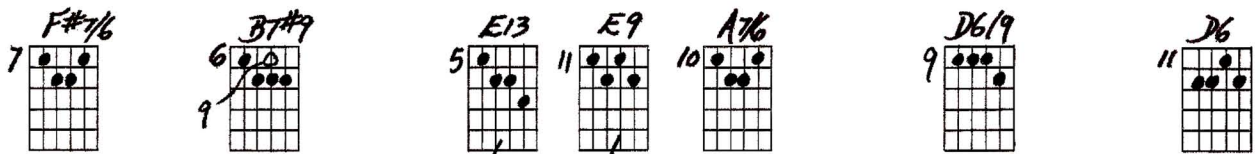
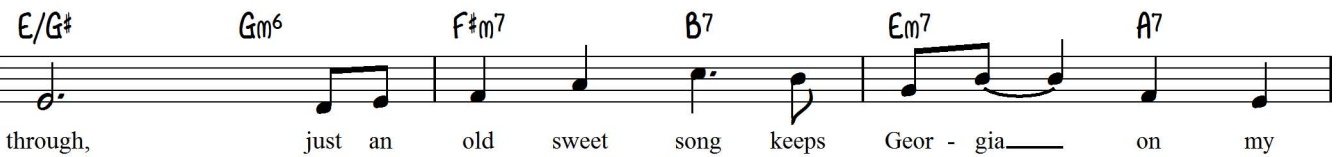
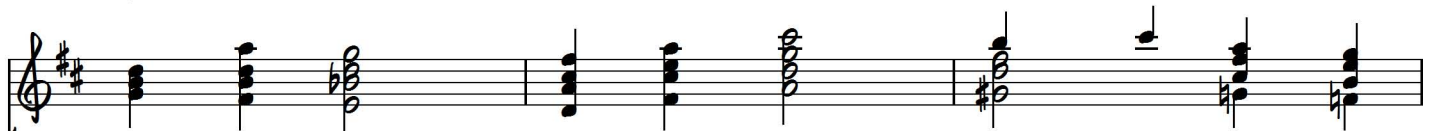
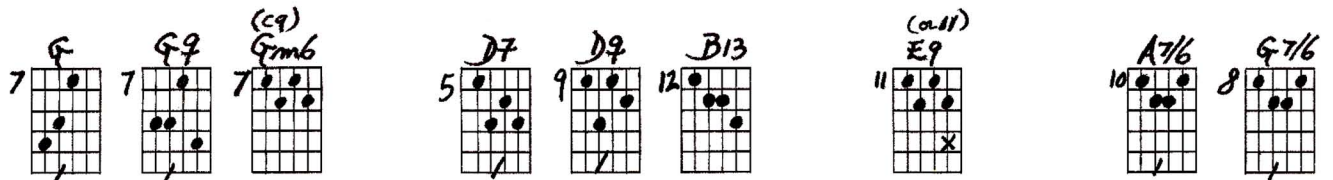
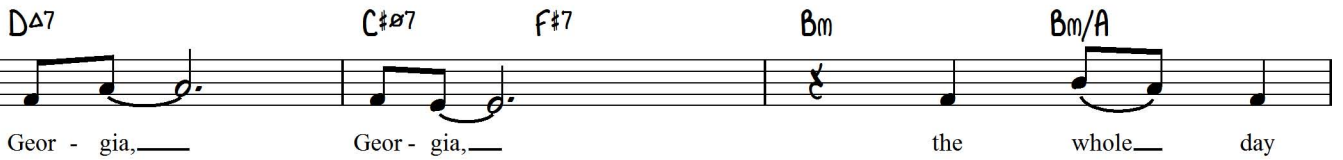
GEORGIA ON MY MIND

Comping on Middle 4 Strings

Playing order: ● × □ △
○ = opt.



Basic Changes:



11 *C#m7/11* 12 *F#7b9+11* 11 *Bm9* 10 *E7b9+11* 9 *Am9* 8 *D7b9+11* 7 *G/9* 7 *Gm9* 7 *C9*

C#m7 *F#7* *Bm* *Bm/A* *E/G#* *Gm6*

Geor - gia, — a song — of you comes as

5 *D7* 12 *B7+* 6 *E9* 11 *E9* 7 *Em9* 6 *A13b9* 7 *D* 9 *D/9* 7 *G7* 10 *G7*

F#m7 *B7* *Em7* *A7* *D6*

sweet and clear as moon - light through the pines. —

9 *C#m7b5* 12 *C#m7b5* 7 *F#7* 11 *F#7b9+* 11 *Bmb* 9 *Em7* 7 *Bm7* 7 *G7*

C#m7 *F#7* *Bm* *Em7* *Bm* *G7*

Oth - er arms reach out to me; —

13 *Bm6* 12 *Em7* 11 *Bm7* 11 *E9+11* 7 *Bm7* 12 *Em7*

19 Bm Em Bm E7 Bm BmΔ7/A#

oth - er eyes smile ten - der - ly; — still in peace - ful

10 *Bm7* 12 *Am7/11* 11 *F#m7/11* 10 *C#7b9+* 9 *F#m7/11* 8 *B7b9+* 7 *Bm9* 7 *E7#9+* 7 *Em7/11* 6 *A13b9*

22 Bm/A G#07 C#7 F#m7 B7(b9) Em7 A7

dreams I see the road leads back to you. —

Optional: Do last verse in key of B

9 *D19* 14 *D6* 16 *C#m7/11* 15 *F#b9* 14 *Bm7/11* 13 *E13b9* 12 *Am7/11* 11 *D7b9*

25 DΔ7 C#07 F#7 Bm Bm/A

Geor - gia, — Geor - gia, — no peace — I

G7 Gm7(11) C13 D6 B7(6) E13 E9+ Em9 A13(b9)

28

E/G# Gm6 F#m7 B7 Em7 A7

find, just an old sweet song keeps Geor - gia on my

D D7 D9 Gmb D A7+ D9

31

D6

mind.

GEORGIA ON MY MIND - COMPING ON MIDDLE 4-STRINGS

2-26-77

all chords take up roughly 2 beats unless otherwise indicated.

x = add after chord
 ~ = SUSTAIN

Key of D

Chord diagrams for 'Georgia on My Mind' in the key of D. The diagrams are arranged in rows and columns, with some chords grouped by brackets. Each diagram shows the fretboard with dots for finger positions and numbers for frets. Some diagrams include annotations like 'OPTIONAL', 'x', and '~'. The chords include D7, D19, C#m7/11, F#7+, F#7b9+, Bm7, Bbm7, Am9, D7b9, G, G9, Gm6, D7, D9, B13, E9, A7/6, G7/6, F#7/6, B7#9, E13, E9, A7/6, D6/9, D6, C#m7/11, F#7b9+11, Bm9, E7b9+11, Am9, D7b9+11, G/9, Gm9, C9, D7, B7+, E9, E9, Em9, A13b9, D, D/9, G7, G7, C#m7b5, C#m7b5, F#7, F#7b9+, Bm6, Em7, Bm7, G7, Bm6, Em7, Bm7, E9+11, Bm7, Em7, Bm7, Am7/11, G#m7/11, C#7b9+, F#m7/11, B7b9+, Bm9, E7#9+, Em7/11, A13b9, D/9, D6, C#m7/11, F#7b9, Bm7/11, E13b9, Am7/11, D7b9, G7, Gm7/11, C13, D6, B7/6, E13, E9+, Em9, A13b9, D, D7, D7, Gm6, D, A7+, D9, and several empty diagrams at the bottom.

MOVE
MELODY UP
1 OCTAVE
FOR GUITAR

9-3-13

GEORGIA

Handwritten musical score for the song "Georgia". The score is written on two staves in G major (one sharp). The first staff contains the melody with guitar chords: D, F#7, Bm D7, G Gm, D, B7, E7, A7, F#7 B7, E7 A7, D G7, D, F#7. The second staff contains the bass line with guitar chords: Bm Em, Bm G7, Bm Em, Bm E7, Bm Em, Bm G#7, G#7 F#7, B7b9, Bm7 E7 Em7 A7. The piece concludes with the instruction "D.C. to end".