

Progressions to Illustrate Different Types of II7 Chords (Qualities)

Ted Greene
5-6-1977

Playing order: ● × □ △
○ = opt.

vi7 II7 ii7 VI7

g Dm7 3 0 G7 3 0 Fm7 1 C11

10 0 Dm7 8 G7 8 Fm9 8 C7/6 6 F6

Ex. 1 Ex. 2

3 Dm7 3 0 G7/6 1 Fm7/11 1 C7 3 Dm7 3 0 G7/6 3 0 Fm7 5 C9

Ex. 3 Ex. 4

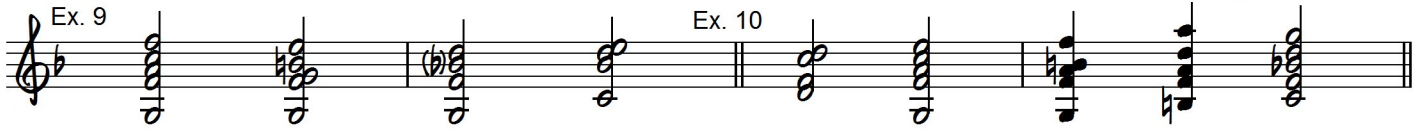
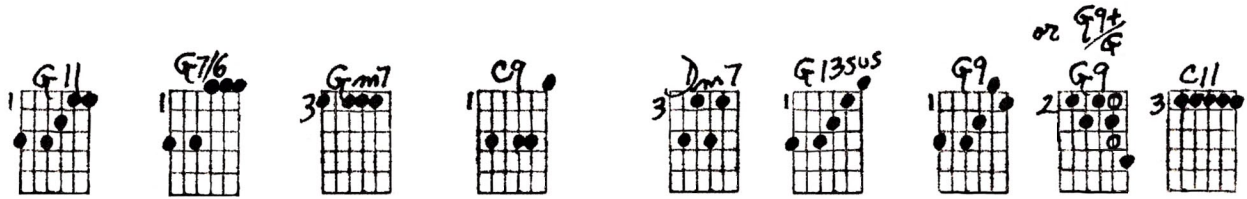
3 Dm7 3 0 G9 3 0 Fm7 3 0 C7 1 0 F6 10 0 Dm7 7 0 G9 6 C11 6 C11b9 5 F

Ex. 5 Ex. 6

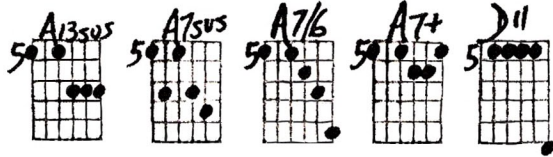
3 Dm7 1 Ab13 1 G13 2 G9 3 C11 14 G13 9 G13 8 Fm7/11 8 C7/6 6 F6

Ex. 7 Ex. 8

Progressions to Illustrate Different Types of II7 Chords
 Ted Greene, 1977-05-06, page 2

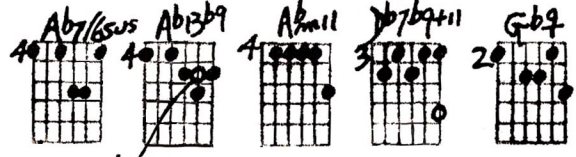


FOR Em9



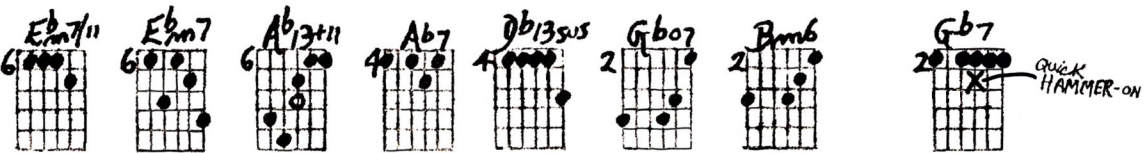
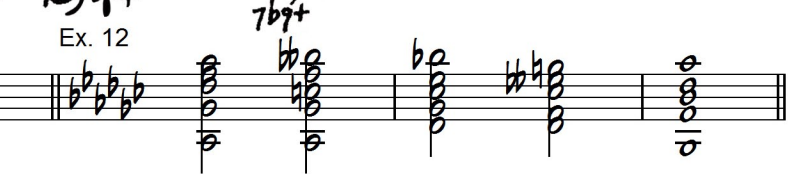
Key of G

Ex. 11

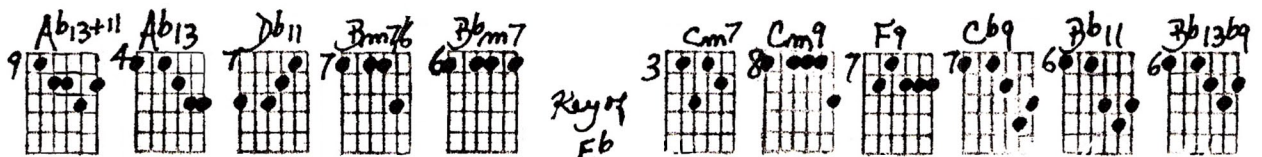


Key of Gb

Ex. 12



Ex. 13



Key of Eb

Ex. 14



Ex. 15



Progressions to Illustrate Different Types of II7 Chords

Ted Greene, 1977-05-06, page 3

Ex. 16

Ex. 17

or A13sus to A11b9

Ex. 18

Ex. 19

Key of Bb

Ex. 20

Ex. 21

Ex. 22

Ex. 23

QUICK HAMMER-ON

Ex. 24

Ex. 25

PROGRESSIONS TO ILLUSTRATE DIFFERENT TYPES OF II7 CHORDS (QUALITIES)

Handwritten guitar chord diagrams illustrating various II7 chord qualities and progressions. The diagrams are organized into several rows and columns, with some sections labeled with key signatures.

Row 1: Vi7 II7 ii7 IV7. Chords: Dm7, F7, Gm7, C11. Progression: Dm7, F7, Gm9, C7/6, F6. Second system: Dm7, G7/6, Gm7/11, C7.

Row 2: Dm7, G7/6, Gm7, C9. Progression: Dm7, G9, Gm7, C7, F6. Second system: Dm7, G9, C11, C11b9, F.

Row 3: Dm7, Ab13, G13, G9, C11. Progression: G13, G13, Gm7/11, C7/6, F6. Second system: G11, F16, Gm7, C9.

Row 4: Dm7, F13sus, G9, G9, C11. Key of G: A13sus, A7sus, A7/6, A7+, D11. Key of Gb: Ab7/6sus, Ab13b9, Ab11, Db7b9.

Row 5: Eb7/11, Ebm7, Ab13+11, Ab7, Db13sus, Gb7, Bmb6, Gb7, Ab13+11, Ab13, Db11, Bm7/6, Bbm7, Gb9.

Row 6: Key of Eb: Cm7, Cm9, F9, Cb9, Bb11, Bb13b9, Eb13+11, Eb13+11, Em9(or Em11), A11, D9.

Row 7: Key of G: Em7/11, A7/6+11, Am7/11, D13, G9, Em7/11, A9+11, Am11, Ab13, Key of Bb: Gm7, C9+11, Cm7, B13, Bb13.

Row 8: Gm7, C7#9+, F7sus, B9, Bb7, Gm7, C7+, Cm7/11, F7#9+, Bb7/6, Gm7/11, C7b9+, Cm11, F9, Bb7/6.

Row 9: Key of G: A7b9, Eb9, Am7b9, D7b9+, G7, A7+, Eb9, D13sus, D13b9, A7#9+, A7b9+11, D11, D7b9+, G9.

Additional notes: "QUIET STRUMMING" is written in several places. A circled "9" is present in the middle section.