

# Major Triad Voicings

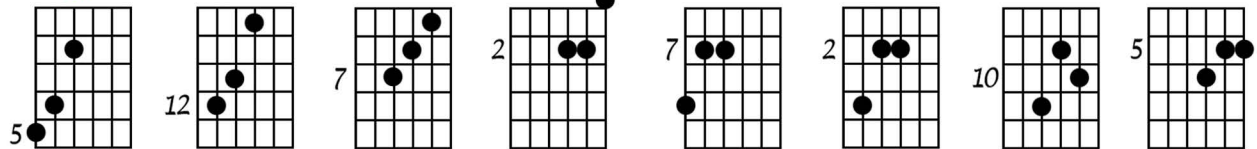
Do diatonic chords in Major, Natural Minor, Harmonic Minor, Melodic Minor, in various keys

## Closed Triads

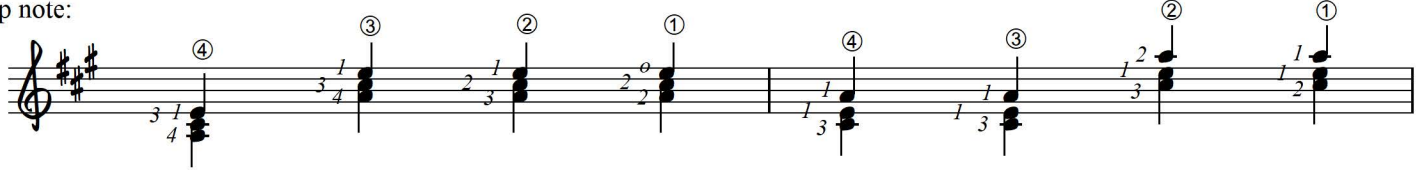
A

etc.....

## 1st Inversions:

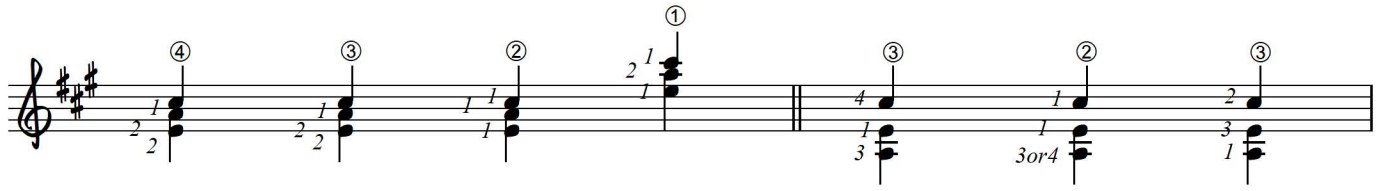
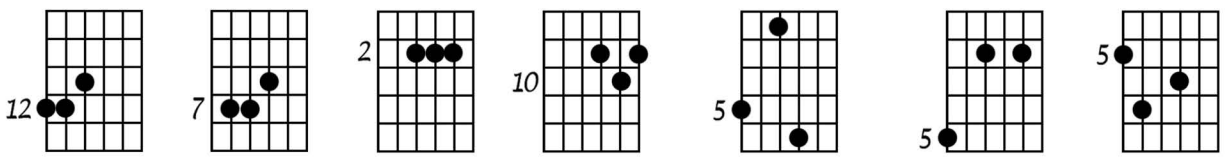


String number of top note:

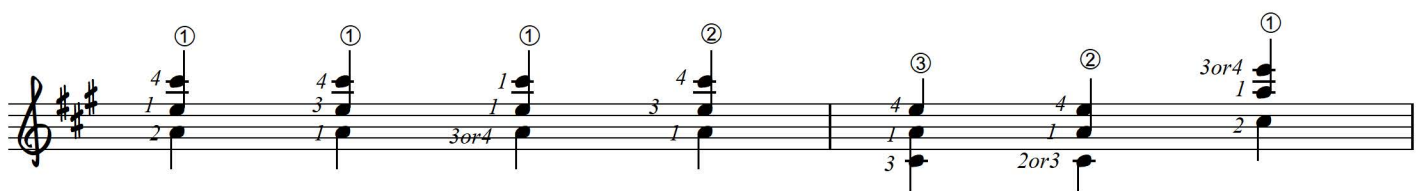
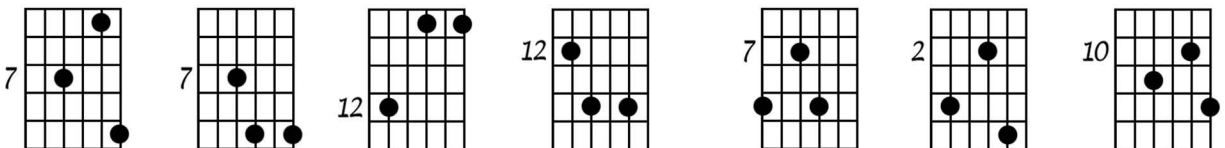


## 2nd Inversions:

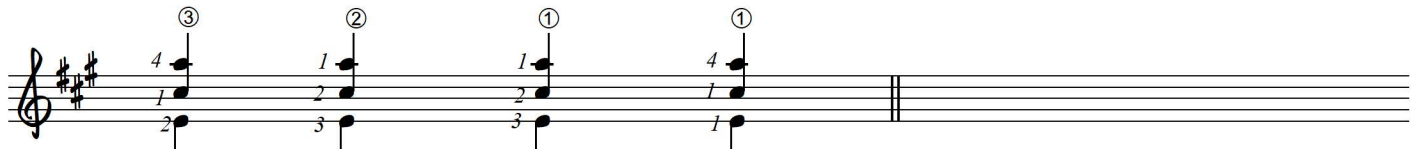
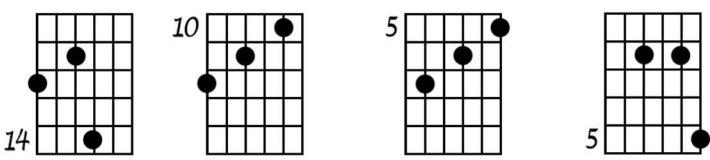
## Open Triads



## 1st Inversions:



## 2nd Inversions:



Wide Open Triads

1st Inversions:

2nd Inversions:

Diagrammatic representation of wide open triads, first and second inversions, and their corresponding musical notation. The diagrams show fingerings for the 5th, 12th, 10th, 5th, 14th, and 10th frets. The notation shows the triads on a treble clef staff with a key signature of two sharps (F# and C#). Fingerings are indicated by circled numbers 1, 2, 3, and 4. Some notes have slurs or accents.

4-Note Triads

Type: #1

Musical notation for 4-note triads, Type #1, on a treble clef staff with a key signature of two sharps. The notation includes various voicings with fingerings (circled numbers) and slurs. Some voicings are labeled with circled numbers 1, 2, 3, and 4.

Diagrammatic representation and musical notation for 4-note triads, Types #2 through #6. The diagrams show fingerings for the 5th, 7th, 5th, 5th, 12th, 5th, and 12th frets. The notation shows the triads on a treble clef staff with a key signature of two sharps. Fingerings are indicated by circled numbers 1, 2, 3, and 4. Some voicings are labeled with circled numbers 1, 2, 3, and 4.

Diagrammatic representation and musical notation for 4-note triads, Types #7 through #10. The diagrams show fingerings for the 5th, 12th, 7th, 5th, 5th, 5th, 5th, 5th, 12th, and 12th frets. The notation shows the triads on a treble clef staff with a key signature of two sharps. Fingerings are indicated by circled numbers 1, 2, 3, and 4. Some voicings are labeled with circled numbers 1, 2, 3, and 4.

4-Note 1st Inversions

Diagram 10, 5, 7, 5, 12, 5, 10, 5

#1 ② ① #2 ② ① #3 ② ①

1 2 2 2 4 4 2 2 4 4 4 4 1 2 3 4 1 2 4 4 1 2

1 1 3 3 1 2 1 4 1 1 1 1 1 2 1 2

5, 10, 5, 7, 2, 10, 10

#4 ① ② ① #5 ② ① #6 ① #7 ①

1 3 4 4 4 3 1 2 1 3 1 1 3 1 4 2 4 1 1 1

4 3 1 2 1 3 1 1 3 1 1 1 1 1 1 1

7, 12, 7, 7, 2, 10

#8 ① ① ① #9 ③ ② ①

4 1 4 1 4 4 4 4 4 4 4 4 4 4 4 4 4 4 4 4

3 1 1 1 1 1 1 1 1 1 1 1 1 1 1 1 1 1 1 1

12, 7, 14, 7, 2, 10

#10 ③ ② ① #11 ③ ② ①

1 2 4 1 3 2 4 1 3 2 1 2 1 1 1 1 1 1 1 1

4 3 3 4 1 1 4 3 2 1 1 1 1 1 1 1 1 1 1 1

4-Note 2nd Inversions

Diagram 10: Fingering for 2nd inversion of C major triad (C4, E4, G4, A4).

Diagram 5: Fingering for 2nd inversion of D major triad (D4, F4, A4, B4).

Diagram 12: Fingering for 2nd inversion of E major triad (E4, G4, B4, C5).

Diagram 7: Fingering for 2nd inversion of F major triad (F4, A4, C5, D5).

Diagram 2: Fingering for 2nd inversion of G major triad (G4, B4, D5, E5).

Diagram 14: Fingering for 2nd inversion of A major triad (A4, C5, E5, F5).

Diagram 10: Fingering for 2nd inversion of B major triad (B4, D5, F5, G5).

Diagram 10: Fingering for 2nd inversion of C major triad (C5, E5, G5, A5).

Musical notation #1: Treble clef, key signature of two sharps (F# and C#). Chords are shown with fingerings: 1-2-3-4 for C5, 1-2-3-4 for D5, 1-2-3-4 for E5, 1-2-3-4 for F5, 1-2-3-4 for G5, 1-2-3-4 for A5, 1-2-3-4 for B5.

Musical notation #2: Treble clef, key signature of two sharps. Chords are shown with fingerings: 1-2-3-4 for C5, 1-2-3-4 for D5, 1-2-3-4 for E5, 1-2-3-4 for F5, 1-2-3-4 for G5, 1-2-3-4 for A5, 1-2-3-4 for B5.

Diagram 12: Fingering for 2nd inversion of C major triad (C4, E4, G4, A4).

Diagram 7: Fingering for 2nd inversion of D major triad (D4, F4, A4, B4).

Diagram 12: Fingering for 2nd inversion of E major triad (E4, G4, B4, C5).

Diagram 7: Fingering for 2nd inversion of F major triad (F4, A4, C5, D5).

Diagram 14: Fingering for 2nd inversion of G major triad (G4, B4, D5, E5).

Diagram 10: Fingering for 2nd inversion of A major triad (A4, C5, E5, F5).

Diagram 10: Fingering for 2nd inversion of B major triad (B4, D5, F5, G5).

Musical notation #3: Treble clef, key signature of two sharps. Chords are shown with fingerings: 1-2-3-4 for C5, 1-2-3-4 for D5, 1-2-3-4 for E5, 1-2-3-4 for F5, 1-2-3-4 for G5, 1-2-3-4 for A5, 1-2-3-4 for B5.

Musical notation #4: Treble clef, key signature of two sharps. Chords are shown with fingerings: 1-2-3-4 for C5, 1-2-3-4 for D5, 1-2-3-4 for E5, 1-2-3-4 for F5, 1-2-3-4 for G5, 1-2-3-4 for A5, 1-2-3-4 for B5.

Diagram 12: Fingering for 2nd inversion of C major triad (C4, E4, G4, A4).

Diagram 7: Fingering for 2nd inversion of D major triad (D4, F4, A4, B4).

Diagram 2: Fingering for 2nd inversion of E major triad (E4, G4, B4, C5).

Diagram 10: Fingering for 2nd inversion of F major triad (F4, A4, C5, D5).

Diagram 14: Fingering for 2nd inversion of G major triad (G4, B4, D5, E5).

Diagram 14: Fingering for 2nd inversion of A major triad (A4, C5, E5, F5).

Musical notation #5: Treble clef, key signature of two sharps. Chords are shown with fingerings: 1-2-3-4 for C5, 1-2-3-4 for D5, 1-2-3-4 for E5, 1-2-3-4 for F5, 1-2-3-4 for G5, 1-2-3-4 for A5, 1-2-3-4 for B5.

Musical notation #6: Treble clef, key signature of two sharps. Chords are shown with fingerings: 1-2-3-4 for C5, 1-2-3-4 for D5, 1-2-3-4 for E5, 1-2-3-4 for F5, 1-2-3-4 for G5, 1-2-3-4 for A5, 1-2-3-4 for B5.

Incomplete Triads

Diagram 12: Fingering for incomplete triad (C4, E4, G4).

Diagram 5: Fingering for incomplete triad (D4, F4, A4).

Diagram 12: Fingering for incomplete triad (E4, G4, B4).

Diagram 12: Fingering for incomplete triad (F4, A4, C5).

Diagram 7: Fingering for incomplete triad (G4, B4, D5).

Diagram 2: Fingering for incomplete triad (A4, C5, E5).

Musical notation #7: Treble clef, key signature of two sharps. Chords are shown with fingerings: 1-2-3 for C5, 1-2-3 for D5, 1-2-3 for E5, 1-2-3 for F5, 1-2-3 for G5, 1-2-3 for A5, 1-2-3 for B5.

Musical notation #8: Treble clef, key signature of two sharps. Chords are shown with fingerings: 1-2-3 for C5, 1-2-3 for D5, 1-2-3 for E5, 1-2-3 for F5, 1-2-3 for G5, 1-2-3 for A5, 1-2-3 for B5.

Three guitar chord diagrams are shown, each with a circled '1' below it. The first diagram has a '5' above the first fret and a '1' below the first string. The second diagram has a '5' above the first fret and a '1' below the first string. The third diagram has a '5' above the first fret and a '1' below the first string. Below the diagrams is a musical staff in treble clef with a key signature of three sharps (F#, C#, G#). The staff contains three measures of music, each corresponding to one of the diagrams. The first measure has a '1' above the first string and a '2' below the second string. The second measure has a '1' above the first string, a '2' above the second string, and a '3' below the third string. The third measure has a '4' above the first string, a '1' above the second string, and a '3' below the third string.

Extras:

Seven guitar chord diagrams are shown, each with a circled '1' below it. The first diagram has a '5' above the first fret. The second diagram has a '5' above the first fret. The third diagram has a '5' above the first fret and a circled '1' below the fifth string. The fourth diagram has a '5' above the first fret. The fifth diagram has a '5' above the first fret. The sixth diagram has a '5' above the first fret and two circled '1's above the sixth and seventh strings. The seventh diagram has a '5' above the first fret and two circled '1's above the sixth and seventh strings. Below the diagrams is a musical staff in treble clef with a key signature of three sharps (F#, C#, G#). The staff contains seven measures of music, each corresponding to one of the diagrams.

Seven guitar chord diagrams are shown, each with a circled '1' below it. The first diagram has a '5' above the first fret. The second diagram has a '5' above the first fret and a circled '1' above the fifth string. The third diagram has a '5' above the first fret. The fourth diagram has a '12' above the first fret. The fifth diagram has a '7' above the first fret. The sixth diagram has a '10' above the first fret. The seventh diagram has a '5' above the first fret and a circled '1' above the fifth string. Below the diagrams is a musical staff in treble clef with a key signature of three sharps (F#, C#, G#). The staff contains seven measures of music, each corresponding to one of the diagrams.

Six guitar chord diagrams are shown, each with a circled '1' below it. The first diagram has a '10' above the first fret. The second diagram has a '12' above the first fret and a '17' below the first string. The third diagram has a '12' above the first fret and a circled '1' above the fifth string, with a '17' below the first string. The fourth diagram has a '12' above the first fret and a circled '1' above the fifth string. The fifth diagram has a '12' above the first fret. The sixth diagram has a '12' above the first fret. Below the diagrams is a musical staff in treble clef with a key signature of three sharps (F#, C#, G#). The staff contains six measures of music, each corresponding to one of the diagrams.

# MAJOR TRIAD VOICINGS - DO DIATONIC CHORDS IN MAJOR, NAT. MIN, HARM. MIN, MEL. MIN, in various keys

**CLOSED TRIADS**  
STRING NUMBER OF TOP NOTE

**OPEN TRIADS**

**WIDE OPEN TRIADS**

**4 NOTE TRIADS**

**4 NOTE 1ST INVERSIONS**

**4 NOTE 2ND INVERSIONS**

**INCOMPLETE TRIADS**

**EXTRAS:**

The score is written on a grand staff (treble and bass clefs) for guitar. It includes the following sections:

- CLOSED TRIADS:** Shows closed triads for major chords in various keys, with string numbers for the top note and fingering (1-4).
- OPEN TRIADS:** Shows open triads for major chords, with string numbers and fingering.
- WIDE OPEN TRIADS:** Shows wide open triads for major chords, with string numbers and fingering.
- 4 NOTE TRIADS:** Shows four-note triads for major chords, with string numbers and fingering.
- 4 NOTE 1ST INVERSIONS:** Shows four-note triads in first inversion for major chords, with string numbers and fingering.
- 4 NOTE 2ND INVERSIONS:** Shows four-note triads in second inversion for major chords, with string numbers and fingering.
- INCOMPLETE TRIADS:** Shows incomplete triads for major chords, with string numbers and fingering.
- EXTRAS:** Shows additional voicings and patterns for major chords.