

2-to-1 Diatonic Stepwise Ascending Bass Motion with Delayed Entrance As the Generator of the Harmony (Part 1)

Assignment:

- 1) Analyze each example and understand the reason for each chord's *appearance* and/or *selection*.
- 2) Play each example fluidly so you can really *hear* each effect.

[Given melody:]

Key of D

1)

2)

Key of Db

3)

Key of C

Or play on the top 4 strings.

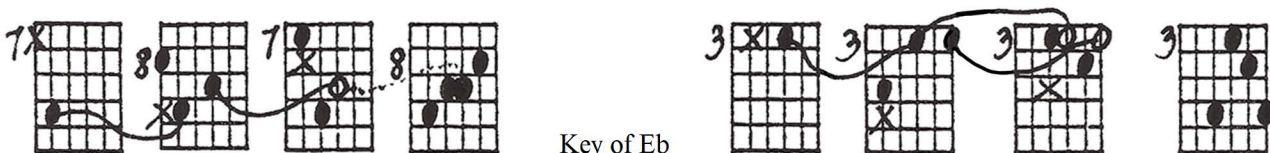
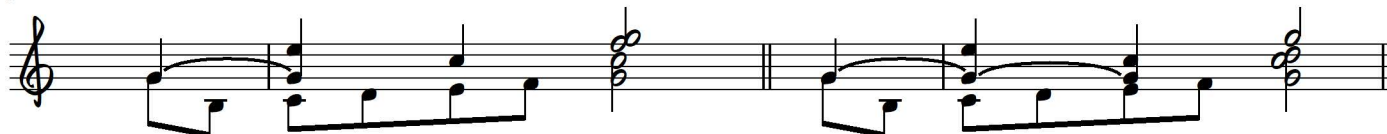
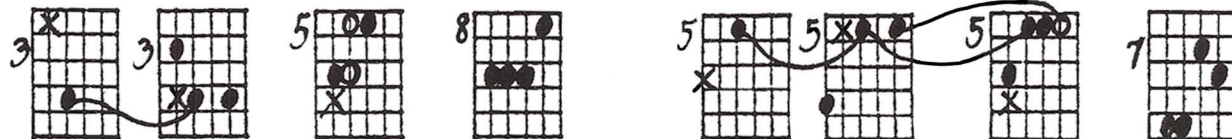
Key of Ab

4)

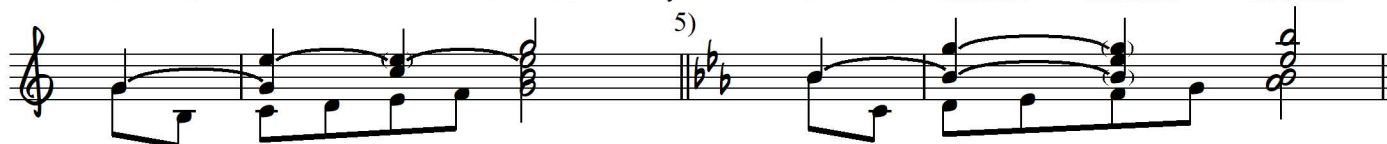
Key of Db

Barre full or near full

Key of C



Key of Eb

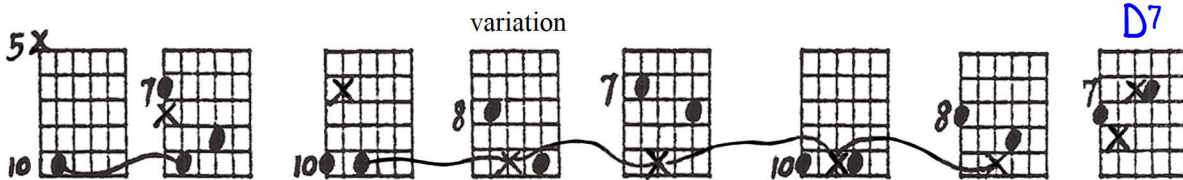
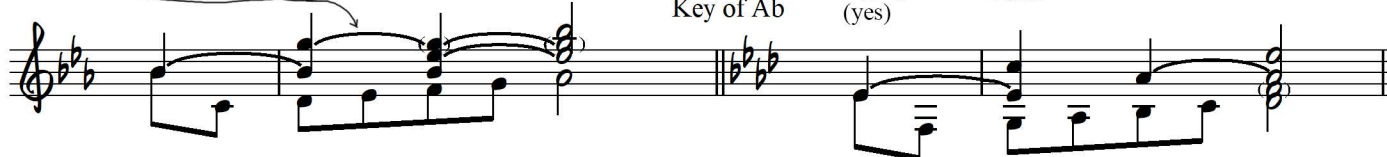


Try this example without sustaining the G first, please.

Optional: Sustain the F after you've tried all the above.



Key of Ab



variation

D7

etc.

Key of C



Also use
E⁷ here.

Key of E

6)

This section shows guitar fretboard diagrams and musical notation for exercise 6 in the key of E. The diagrams consist of two groups of four fretboards each, connected by a melodic line. The first group starts with a 1st fret barre and ends with a 4th fret barre. The second group starts with a 7th fret barre and ends with a 6th fret barre. The musical notation below shows the corresponding bass line in the key of E (one sharp), with a 6/8 time signature. The melody is a stepwise ascent from E2 to E4, with a delayed entrance of the bass line.

Then again with [finger] 2

Very tough, but have patience

Key of E^b

This section shows guitar fretboard diagrams and musical notation for exercise 6 in the key of E^b. The diagrams consist of two groups of four fretboards each, connected by a melodic line. The first group starts with a 7th fret barre and ends with a 3rd fret barre. The second group starts with a 6th fret barre and ends with a 3rd fret barre. The musical notation below shows the corresponding bass line in the key of E^b (three flats), with a 6/8 time signature. The melody is a stepwise ascent from E^b2 to E^b4, with a delayed entrance of the bass line.

7)

Key of G

This section shows guitar fretboard diagrams and musical notation for exercise 7 in the key of G. The diagrams consist of two groups of four fretboards each, connected by a melodic line. The first group starts with a 3rd fret barre and ends with a 6th fret barre. The second group starts with a 7th fret barre and ends with a 5th fret barre. The musical notation below shows the corresponding bass line in the key of G (one sharp), with a 6/8 time signature. The melody is a stepwise ascent from G2 to G4, with a delayed entrance of the bass line.

Key of D

Key of A^b

This section shows guitar fretboard diagrams and musical notation for exercise 7 in the keys of D and A^b. The diagrams consist of two groups of four fretboards each, connected by a melodic line. The first group starts with a 3rd fret barre and ends with a 3rd fret barre. The second group starts with a 4th fret barre and ends with a 6th fret barre. The musical notation below shows the corresponding bass lines in the keys of D (two sharps) and A^b (four flats), with a 6/8 time signature. The melody is a stepwise ascent from D2 to D4, with a delayed entrance of the bass line.

Again very tough, but worth it.

Key of B

Key of Bb

This section shows two examples of the exercise. The first is in the key of B, with fretboard diagrams for positions 2, 9, 9, and 9. The second is in the key of Bb, with fretboard diagrams for positions 5, 6, 10, and 13. Each diagram shows a sequence of four chords connected by a melodic line. Below each diagram is a musical staff showing the corresponding notes and chord symbols.

Then again with 2 and two middle voices tied at end.

Key of A

Key of Ab

This section shows two more examples. The first is in the key of A, with fretboard diagrams for positions 9, 7, 9, and 7. The second is in the key of Ab, with fretboard diagrams for positions 8, 8, 8, and 8. The diagrams show the fretboard positions and fingerings for the chords. The musical notation below shows the notes and chord symbols, with a circled '2' indicating the second fret and tied notes in the middle voices at the end of the phrase.

Also start in the 5th position.

Key of F

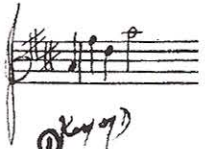
This section shows an example starting in the 5th position in the key of F. The fretboard diagrams show positions 8, 8, 8, and 11. The musical notation below shows the notes and chord symbols.

Also try
Dm/9

This section shows an example using the Dm/9 chord. The fretboard diagrams show positions 5, 6, 10, and 13. The musical notation below shows the notes and chord symbols.

2 to 1 BASS MOTION as the GENERATOR of the HARMONY

© 5-2-85
J. Johnson



ASSIGNMENT: ① ANALYZE EACH EX. AND UNDERSTAND THE REASON FOR EACH CHORD'S APPEARANCE 1/2 SELECTION ② PLAY EACH EX. FLUENTLY SO YOU CAN REALLY HEAR EACH EFFECT.

① Key of D

② Key of D^b

③ Key of B^b

④ Key of A^b

⑤ Key of E

⑥ Key of E^b

⑦ Key of D^b

⑧ Key of D

⑨ Key of B^b

⑩ Key of F

① Key of C

② Key of C

③ Key of C

④ Key of E^b

⑤ Key of C

⑥ Key of A^b

⑦ Key of G

⑧ Key of A^b

⑨ Key of A

⑩ Key of F

① Key of A^b

② Key of A^b

③ Key of A^b

④ Key of A^b

⑤ Key of A^b

⑥ Key of A^b

⑦ Key of G

⑧ Key of G

⑨ Key of G

⑩ Key of G

OPT. SUSTAIN THE F AFTER YOU'VE TRIED ALL THE ABOVE

AGAIN VERY TOUGH BUT WORTH IT

then again with 2 and 2 middle voices tied at end

NO GO STRAY IN THE 5TH POS.

2-X
1-X
15