

Playing order: ● × □ △
○ = opt.

Baroque Contrary Motion Sounds

Mental Organization

Think in terms of what scale degree (home key) is in the bass.

Ted Greene
1982-05-07
1983-10-17
1980-05-29

[Ted crossed out this first example and referred to example #14 below. Nevertheless, we've included the notation here.]

[Chord diagrams and chord names are just suggestions. Other forms, positions, and interpretations may also be possible.]

10 7 8 9 E7 E7 E E7(b9) Am/9

Example 1: A musical staff with a treble clef. Above the staff are nine guitar chord diagrams. The first diagram is labeled '10'. The second is labeled '7'. The third is labeled '8'. The fourth is labeled '9'. The fifth is labeled 'E7'. The sixth is labeled 'E7'. The seventh is labeled 'E'. The eighth is labeled 'E7(b9)'. The ninth is labeled 'Am/9' and has a '3 14 1' label below it. The musical notation below the staff shows a sequence of notes and chords corresponding to these diagrams, with a bracketed '1' at the beginning.

6 E7 Am F B7#9 E7

Example 2: A musical staff with a treble clef. Above the staff are six guitar chord diagrams. The first is labeled '6'. The second is labeled '6'. The third is labeled 'E7'. The fourth is labeled 'Am'. The fifth is labeled 'F'. The sixth is labeled 'B7#9'. The seventh is labeled 'E7'. The musical notation below the staff shows a sequence of notes and chords corresponding to these diagrams, with a bracketed '2' at the beginning and the text 'etc.' at the end.

10 9 C7 F F D#07 B7b9 E or E

Example 3: A musical staff with a treble clef. Above the staff are seven guitar chord diagrams. The first is labeled '10'. The second is labeled '9'. The third is labeled 'C7'. The fourth is labeled 'F'. The fifth is labeled 'F'. The sixth is labeled 'D#07' and 'B7b9'. The seventh is labeled 'E' and 'or E'. The musical notation below the staff shows a sequence of notes and chords corresponding to these diagrams, with a bracketed '3' at the beginning and the text 'or F' above the staff.

10 9 Am Dm E

Example 4: A musical staff with a treble clef. Above the staff are five guitar chord diagrams. The first is labeled '10'. The second is labeled '9'. The third is labeled 'Am'. The fourth is labeled 'Dm'. The fifth is labeled 'E'. The musical notation below the staff shows a sequence of notes and chords corresponding to these diagrams, with a bracketed '4' at the beginning and the text 'or reverse (A, B)' below the staff.

"Baroque Contrary Motion Sounds" -- Ted Greene, p. 2

10 12 14 14 17 14 9

[5]

10 12 13 14 9 or 10 12 12 10

[6]

6 6 5 7 8 7 7 or 7

[7]

10 12 8 14 or 14 10 14 9

[8]

5 7 7 9 7 12 9 4

[9]

9A

5 7 7 10 7 7 6 7

B7+ E_m/9/11 B7 E_m A#^o7 B

Rare use of an ultra modern m6/9/11

9B

5 7 7 5 7 7 6 7

B7+ E_m⁶/9/11 B7 E_m A#^o7 B

9C

5 7 9 9 9 12 9 4

F#7b9 B B7 A⁹ E_m⁶ F#7#9 B

9D

5 7 7 9 9 12 9 4

B7+ E_m/9/11 B7 A⁹ E_m⁶ F#7#9 B

9E

5 9 9 9 8 7 6 7

B B7+ E_m/9/11 - A¹³ D#^o7 E_m A#^o7 B

"Baroque Contrary Motion Sounds" -- Ted Greene, p. 4

14 **B_m7** 13 **A[#]7[#]9** 14 **F[#]7** 9 **B_m** 7 **E_m** 4 **F[#]_{sus}** 7 **B**

10 or E or D, C# 4th fret

12 **B_m** 14 **G[#]m7^b5** 11 **E_m7** 11 **F[#]** 8 10 6

11 1 3 2 1 4

12

10 13 14 **A7-D_m** 12 **A7** 13 **D_m/9** 12 **E_m7^b5** 12 **A**

13 17 3 14 1

13 8^m

10 12 8 9 **E7** 10 **F** 10 **G9** 9 **E** 12 **A_m/9** or **A_m/9** or **D_m**

12 3 14 1

14 etc.

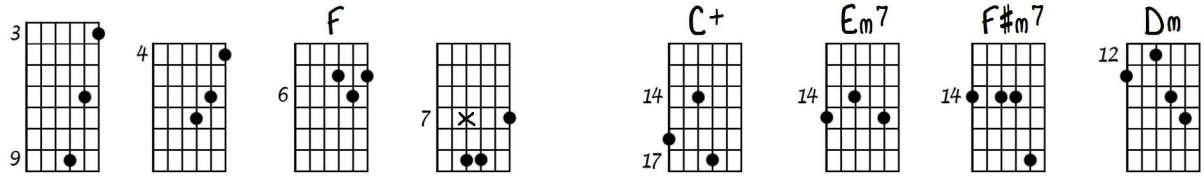
10 12 8 9 **B_m7^b5** or **B_m7^b5** 9 **E**

10 14 7th fret stretch

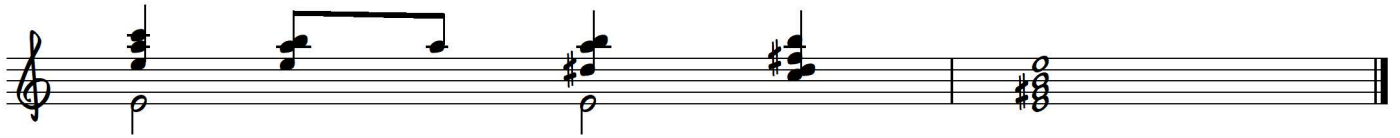
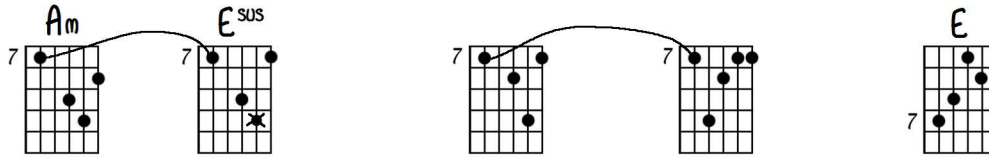
15

"Baroque Contrary Motion Sounds" -- Ted Greene, p. 5

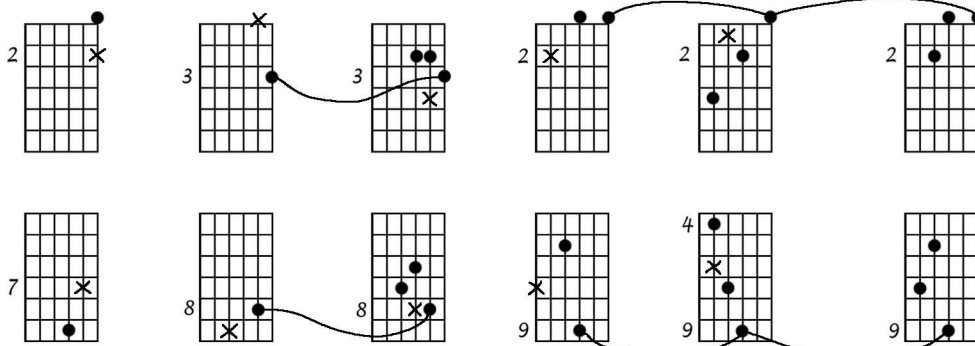
Tuned 1/2
step down



16



Pyramids



17



Pyramid end for "Love with the Proper Stranger"

18



Mental Orpung: **BAROQUE CONTRARY MOTION SOUNDS**
 think in terms of what scale degree (HOLIC KEY) is in the base

5-7-82

Handwritten musical score for "Baroque Contrary Motion Sounds". The score is written on ten staves. The first staff has a key signature of one sharp (F#) and a time signature of 2/4. The notation includes various musical symbols such as notes, rests, and accidentals. There are several annotations in the margins: "See sketch below" on the first staff, "E7 + Am (G, 11)" on the second staff, "or, sense of an ultra modern MC/9/11" on the third staff, "8VA" on the fourth staff, "A1183" on the fifth staff, "Tuned 1/2 step down" on the sixth staff, and "7th fret stretch" on the seventh staff. The score ends with a double bar line on the seventh staff.

Pyramids

Handwritten musical score for "Pyramids". The score is written on three staves. The first staff has a key signature of one sharp (F#) and a time signature of 2/4. The notation includes various musical symbols such as notes, rests, and accidentals. There are several annotations in the margins: "Pyramid END" on the first staff, "52980" on the second staff, "LOVE while PR. STRANGE" on the third staff, and "Pyramid" on the fourth staff. The score ends with a double bar line on the fourth staff.