

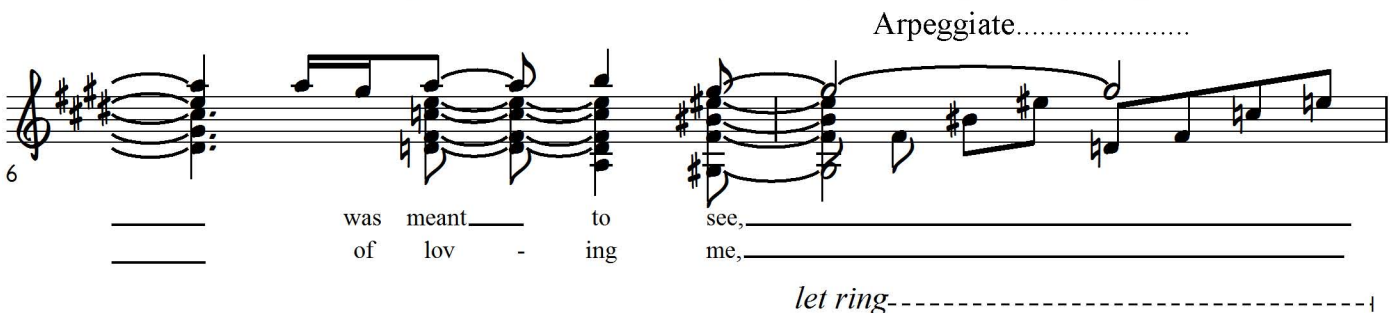
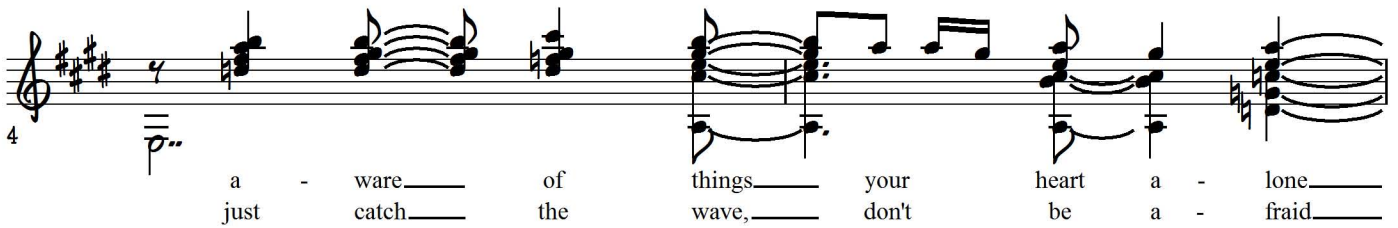
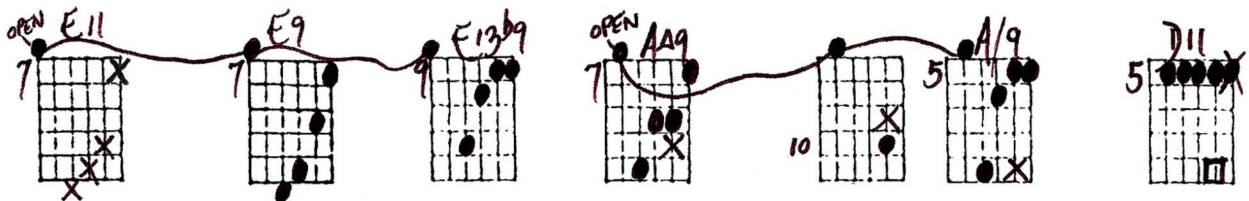
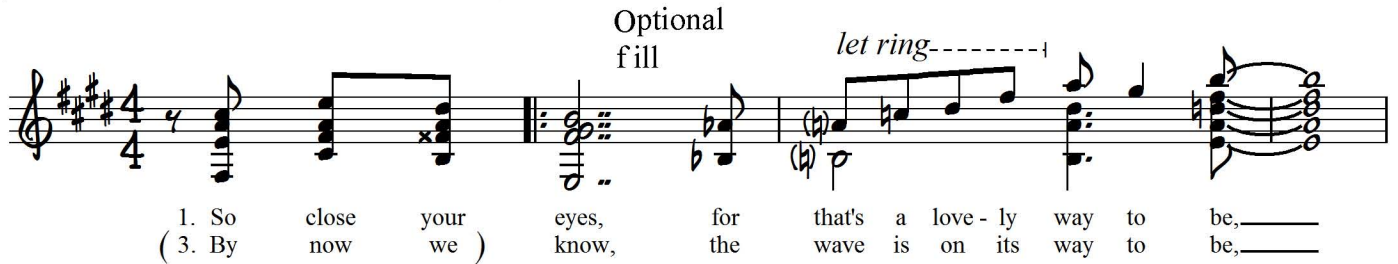
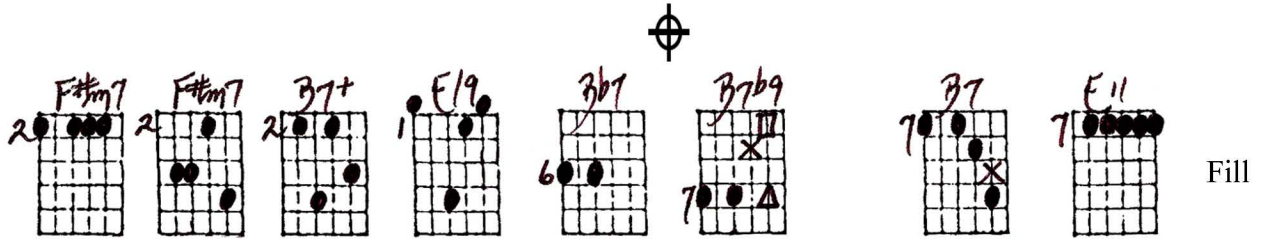
WAVE

Solo Guitar

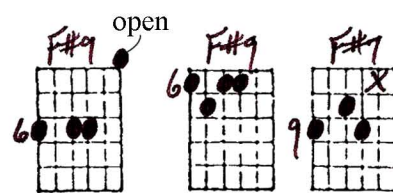
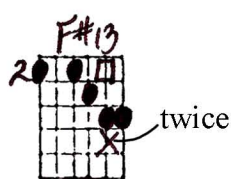
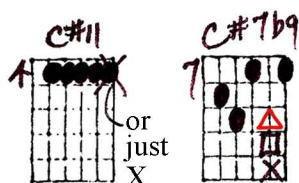
Playing order: ● × □ △
○ = opt.

Sustain all notes where possible in each diagram.

Key of E

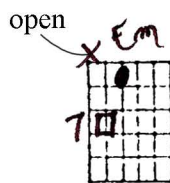
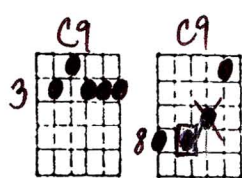


Wave - Ted Greene Arrangement (p. 2)



8

the fun - da - ment - al lone - li - ness goes when - ev - er



Fill -----

10

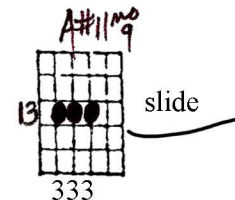
two can dream a dream to - geth - er.
let ring-----

Fill -----

Em7 **A9**

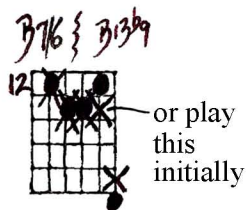
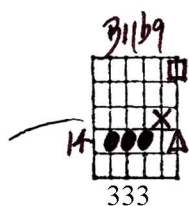


Fill



12

You can't de - ny, don't



Fill

14

try to fight the ris - ing sea,-----

Wave - Ted Greene Arrangement (p.3)

alternate

16

don't fight the moon, the stars a - - - - - bove,

----- Fill -----

Handwritten guitar diagrams for measures 16-17:

- Measure 16: E13 (fret 17)
- Measure 17: AA9 (fret 4) - twice
- Measure 18: AA9 (fret 4) - 3
- Measure 19: A(A7) (fret 12) - alternate
- Measure 20: Am9 (fret 4)

18

and don't fight me, _____

Handwritten guitar diagrams for measures 18-20:

- Measure 18: D13 (fret 15)
- Measure 19: G#13 (fret 14)
- Measure 20: G#7b9+ (fret 14)
- Measure 21: C#9 (fret 14)

----- or stay on the F#13 -----

20

the fun - da - ment - al lone - li - ness goes when - ev - er

Handwritten guitar diagrams for measures 20-22:

- Measure 20: C#7b9+ (fret 14)
- Measure 21: F#13 (fret 12) - twice
- Measure 22: C#m7 (fret 16)
- Measure 23: F#7 (fret 14)

19th fret →

Fill -----

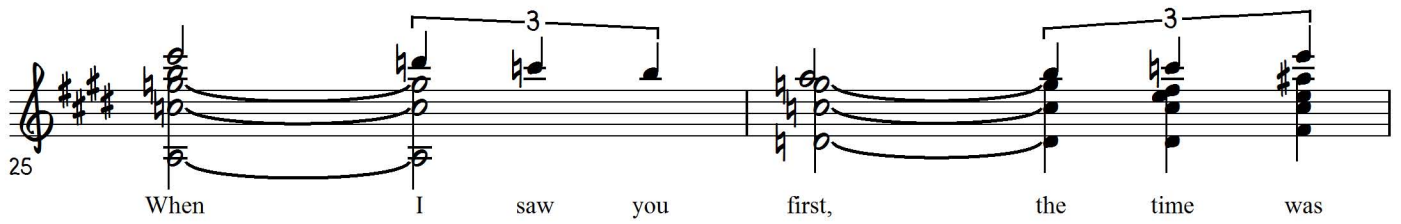
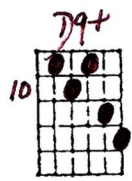
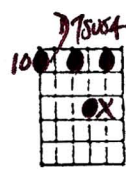
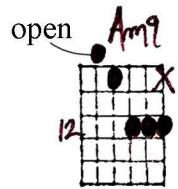
22

two can dream a dream to - geth - er. _____

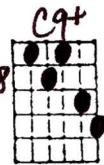
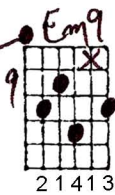
Handwritten guitar diagrams for measures 22-24:

- Measure 22: C13 (fret 13)
- Measure 23: C1b6 (fret 8)
- Measure 24: B7(4) (fret 7) - twice
- Measure 25: open Em7 (fret 5)
- Measure 26: open A9 (fret 5)
- Measure 27: open Em7 (fret 5)
- Measure 28: A9 (fret 5)

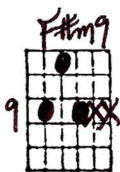
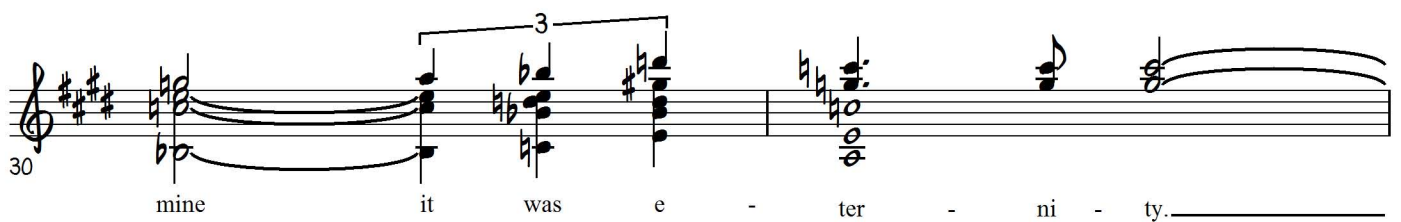
Wave - Ted Greene Arrangement (p.4)



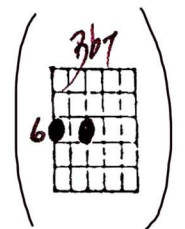
Fill -----



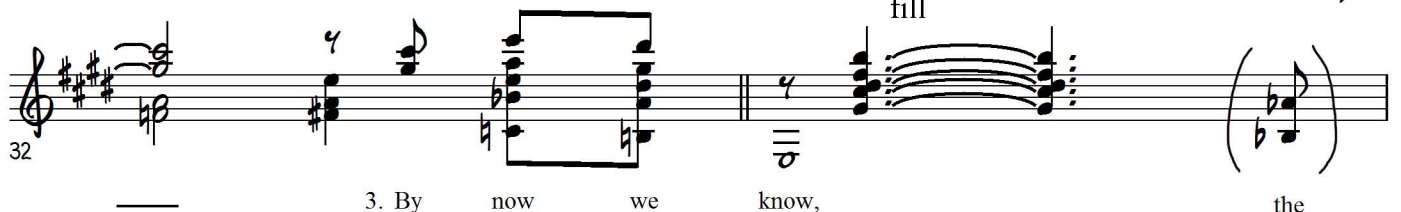
3 times



D.C.
al Coda
and take the
1st ending.



optional
fill



SOLO GUITAR

WAVE - ANTONIO CARLOS JOSE

© 8-4-88
J. J. Johnson

Key of E 2 F#m7 F#m7 B7+ E1/9 3b7 B7b9 B7 F11 open E11 E9

SUSTAIN ALL NOTES WHERE POSSIBLE IN EACH DIAGRAM

twice F#7#9 B13b9 open E6/9 A#11mo9 B11b9 B7/6 B13b9 Bm9 E13 AA9... see below for alternate

Am9 D13 G#13 G#7b9 C#9 place third initially C#7#9 F#13 C#m7 twice F#7 C13

C1/6 B7(+ Em7 open A9 19th fret Am9 Am7 D7sus D9

D9+ Bm7 Em Em9 C11 C7 C9 C9+ Am7 F1/9

F#m9 C7/6 B7/6 open E13 D.C. and take the 1st and 15th strings

9 F#m9 C7/6 B7/6 open E13 D.C. and take the 1st and 15th strings

12 A(A7)

Ted Greene
1977-06-08

13 - li-ness goes_ when-ev-er two can dream a dream to - geth____ er.____ You can't de-

"Wave" - Ted Greene's lead sheet and arrangement sketch p.2

12. (C¹³)

Dm ⁷	G ⁷	Gm ⁷	C ⁷ or C ⁹	C ⁷ /6	Am ⁷	Dm ⁷
Dm	G	Gm	C ⁷		F	
Dm ⁷	G	Gm ⁷	C ⁹ /Bb		Am ⁷	

17 When I saw you first, the time was half past three,_____

Fm ⁷	Bb ⁷ or Bb ⁹	Bb ⁷ /6	Gm ⁷	(EbΔ ⁹)	Em ⁷	E7 ⁹ /G	A13b ⁹ /G
Fm ⁷	Bb ⁷		Eb		A ⁷		
Fm ⁷ /Bb	Bb ⁹ /Ab		Gm ⁷		A7b ⁹		

22 when_____ your eyes met mine it was e - ter - ni - ty._____ By now we

DΔ ⁹	A7b ⁹	A ⁷	Am ⁷	D ¹¹	D ⁹	GΔ ⁹
D	A ⁷		Am ⁷	D ⁷		G
DΔ ⁷	Bb ⁰		Am ⁷	D7b ⁹		GΔ ⁷

26 know, the wave is on its way to be,_____ just catch the wave, don't be a - fraid

Gm ⁷	C ⁹	F# ⁷ /6	F# ⁷ +	B ¹¹	B ⁷ +	E ¹¹	E ⁷ or E ⁹
Gm		F# ⁷		B ⁷		E ⁷	
Gm ⁶		F# ¹³	F# ⁷ +	B ⁹	B7b ⁹	Bm ⁷ /E	E ⁷

31 _____ of lov - ing me,_____ the fun - da - men - tal lone - li - ness goes when-ev - er

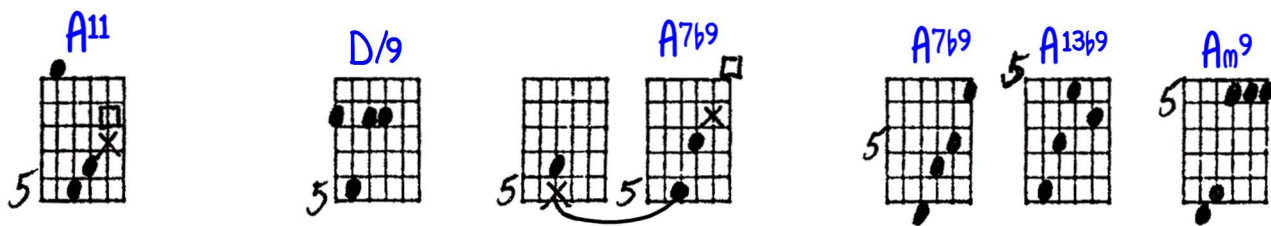
Bb ⁹	A ⁷	Dm ⁽⁷⁾	G ⁷	Dm ⁷	G ⁷ /6
Bb ⁷	A ⁷	Dm	G	Dm	G ⁷
Bb ⁹	A ⁷	Dm ⁷	G	Dm ⁷	G ¹³

35 two can dream a dream to - geth - er._____

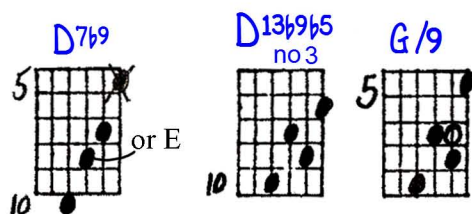
WAVE

Playing order: ● × □ △
○ = opt.

Harmonized Melody for Ensemble Setting or Solo Guitar



1. So close your eyes, for that's a love - ly way to be, _____



_____ a - ware of things your heart a - lone was meant to see,

*Harmonized Melody for
ensemble setting or Solo Guitar*

WAVE

2-13-95
J. Greene

