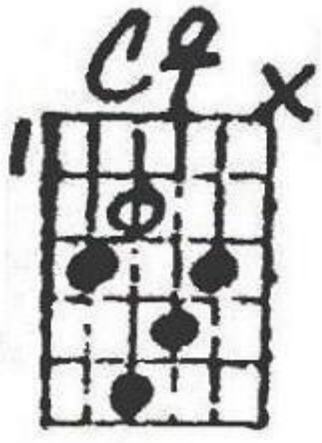
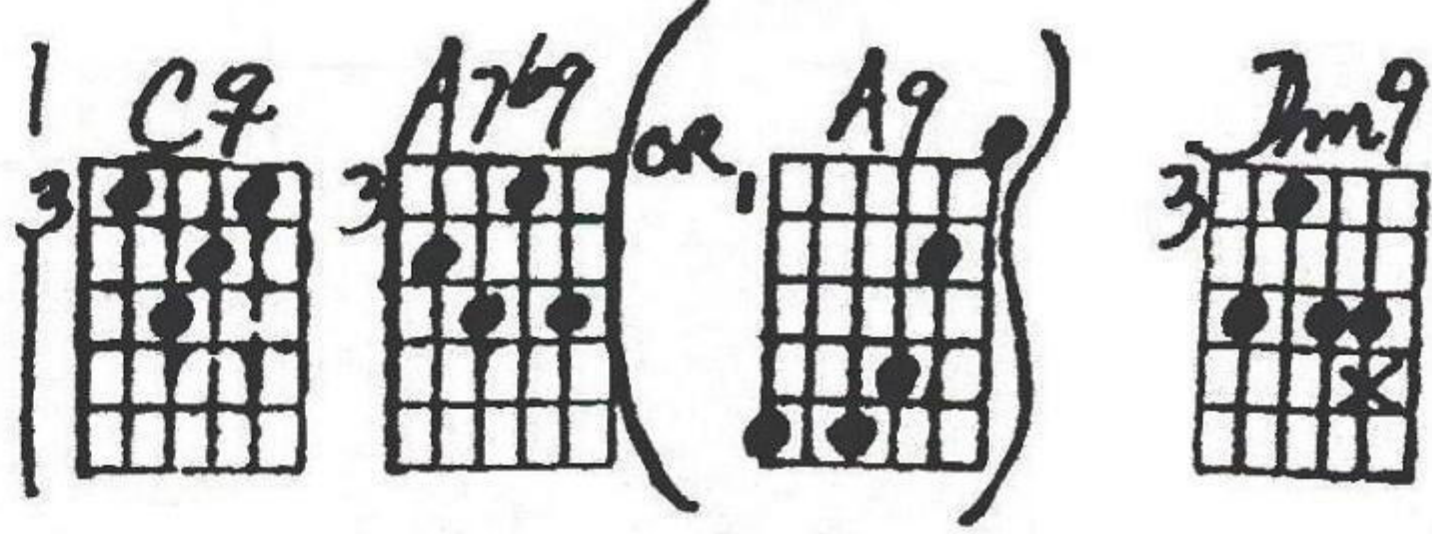


WHAT KIND OF FOOL AM I

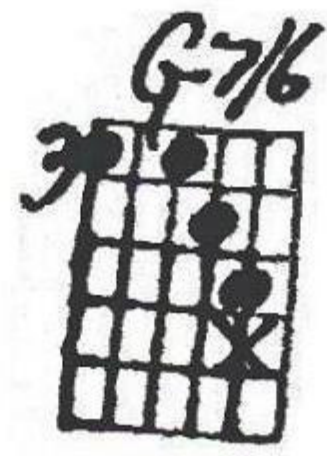


Cmaj7

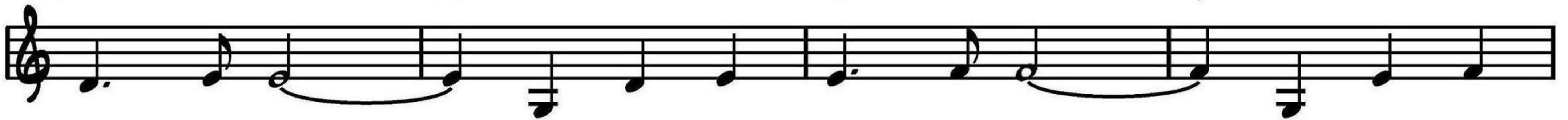


Am7

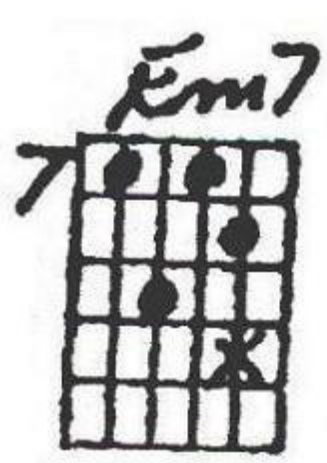
Dm7



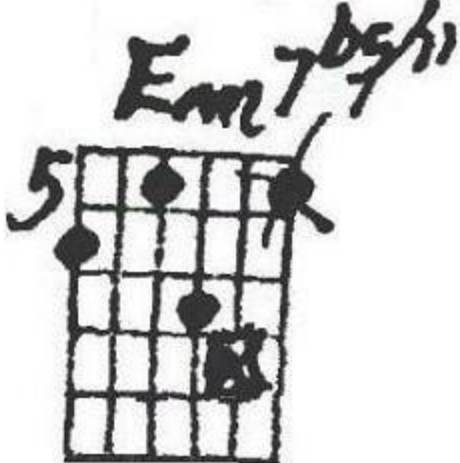
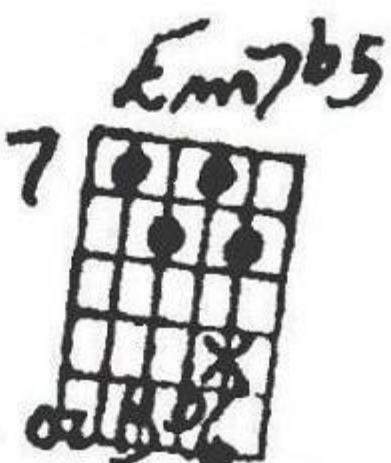
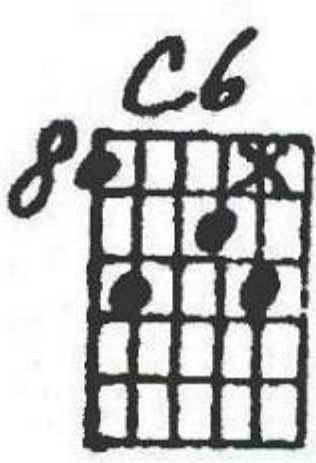
G7



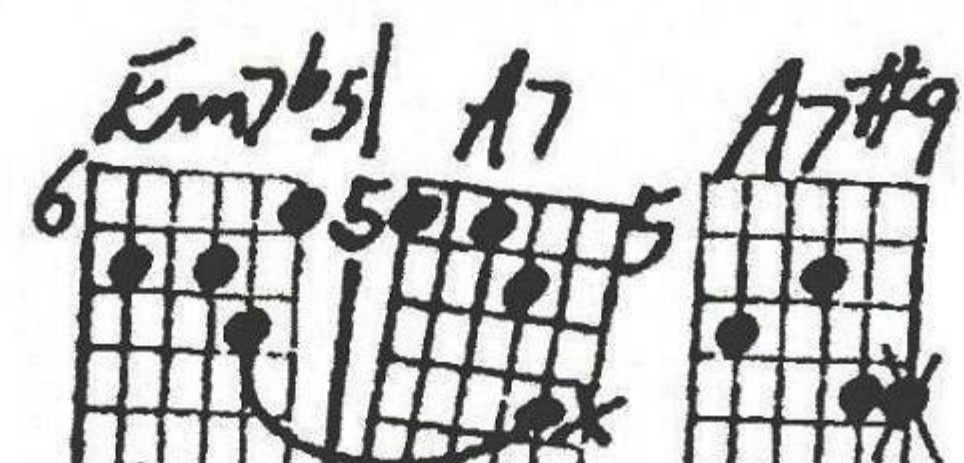
lips are these that lied with ev - 'ry kiss? that whis - pered
clown am I? What do I know of life? Why can't I



Em7



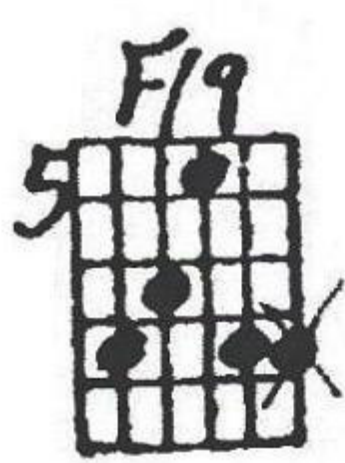
Gm7



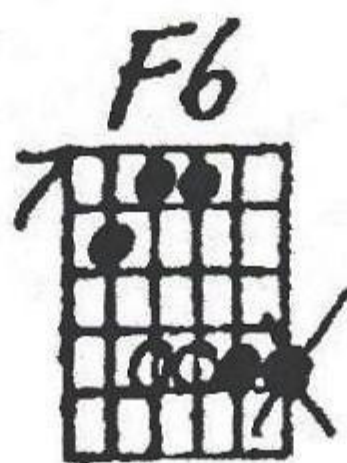
C7



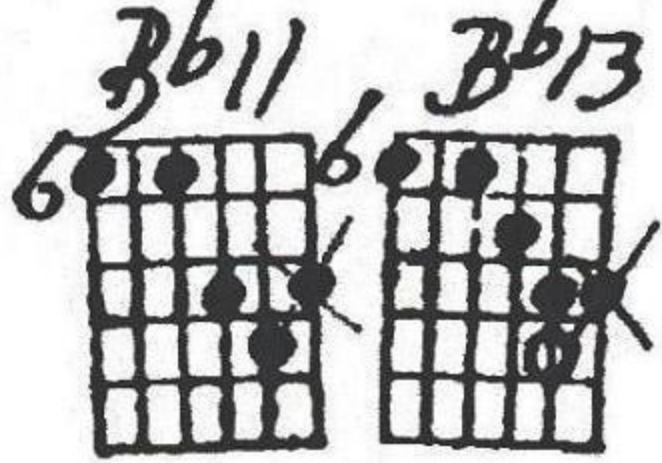
emp - ty words of love that left me a - lone like this. why can't I
cast a - way the mask of play and live my life? Why can't I



Fmaj7



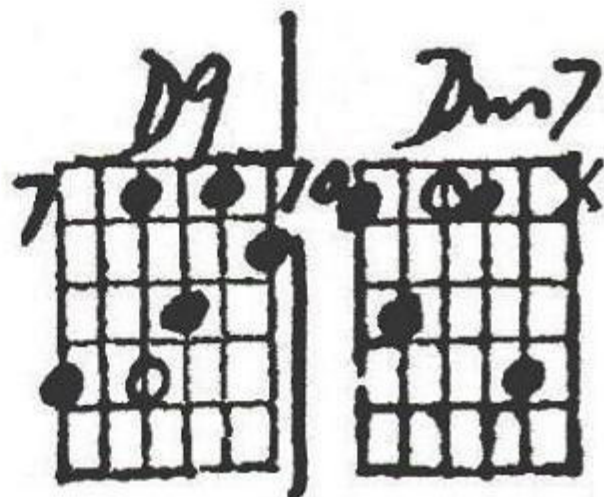
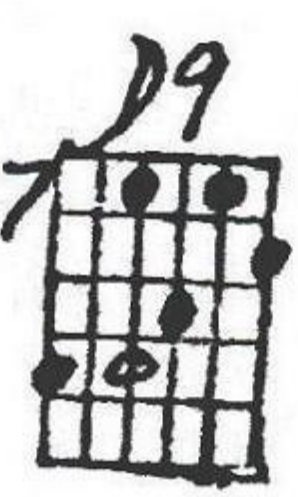
Bb7



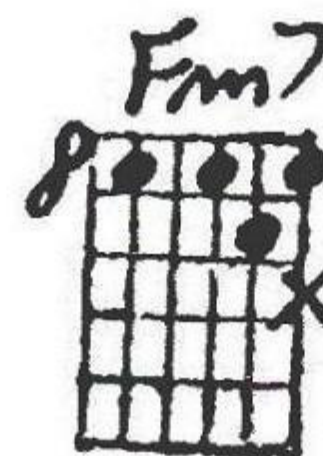
Am7



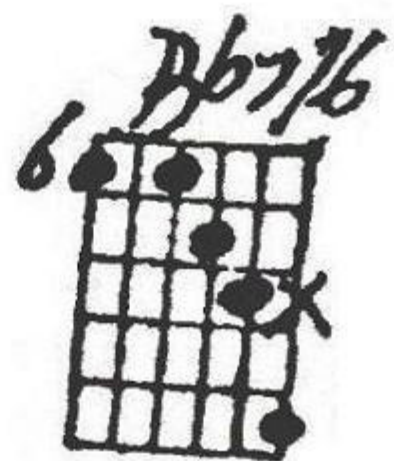
fall in love like an - y oth - er man,
fall in love 'til I don't give a damn,



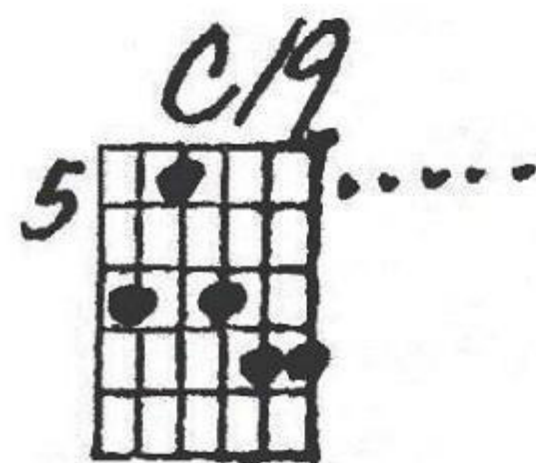
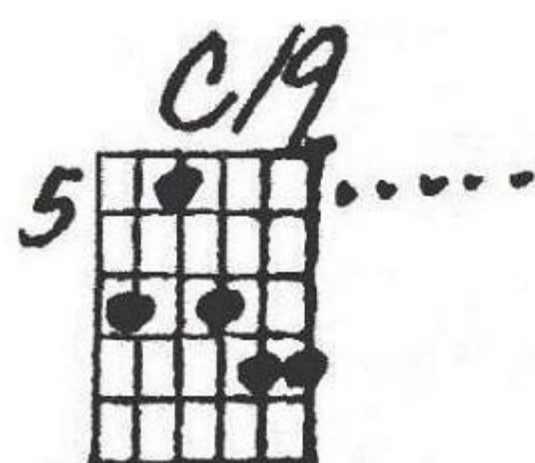
Dm7



G7sus4



and may - be then I'll know what kind of fool I
and may - be then I'll know what kind of fool I

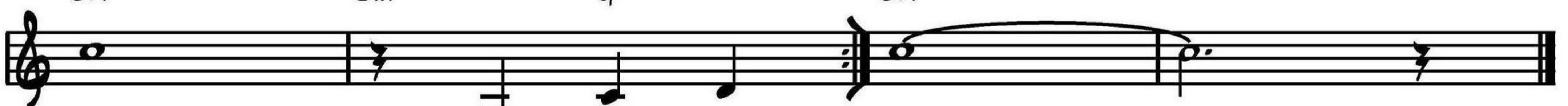


1. C6/9

Dm7

G7

2. C6/9



am. What kind of Am.