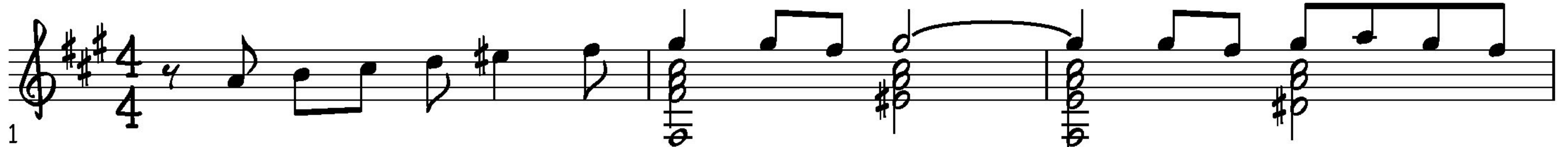
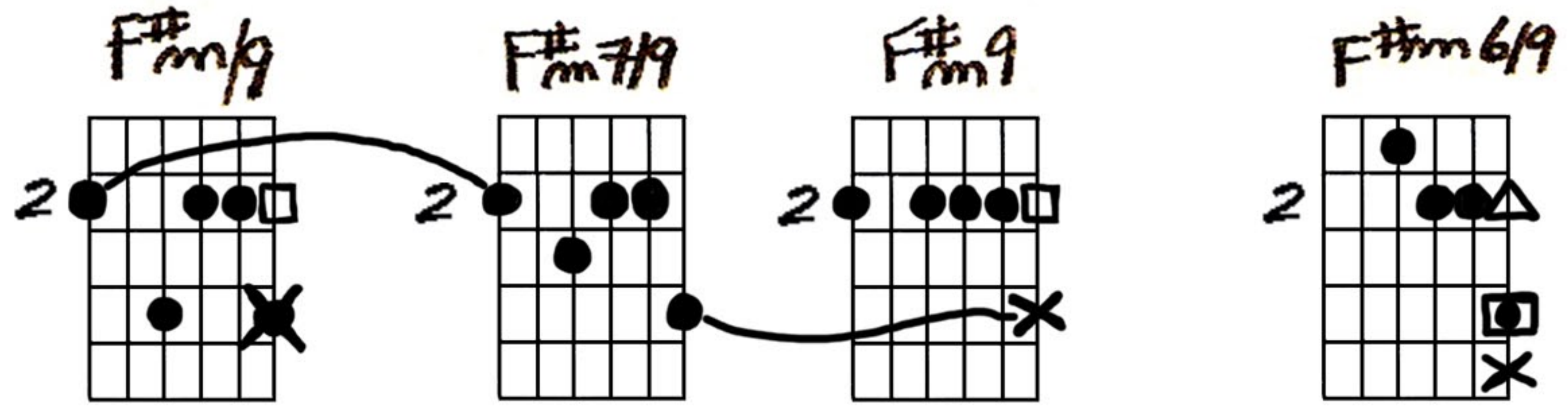
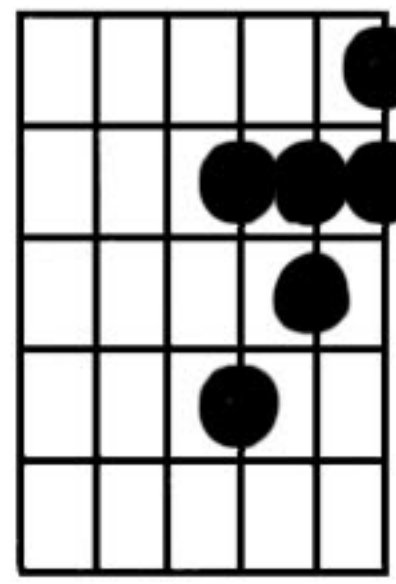


WHAT ARE YOU DOING THE REST OF YOUR LIFE?

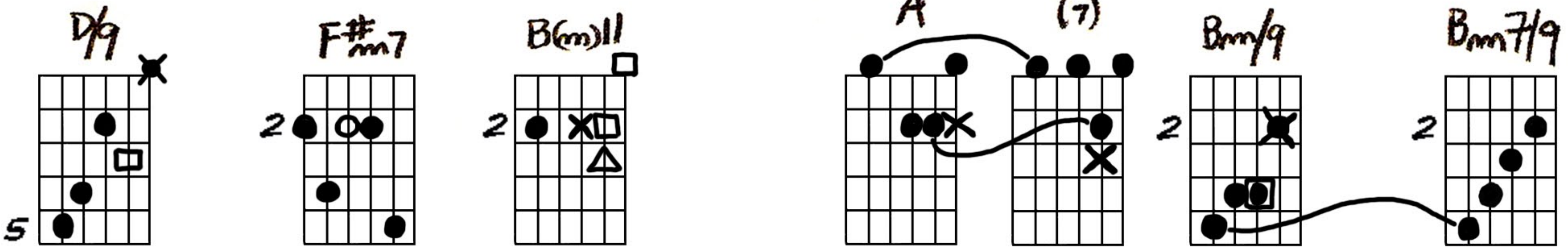
FILL IN WITH BROKEN
CHORDS (SEE BEGINNING
OF 3RD COMPLETE MEASURE)

Playing order = ● × □ △ ★

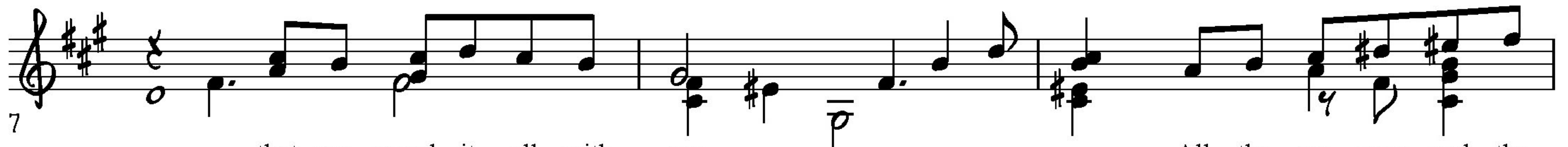
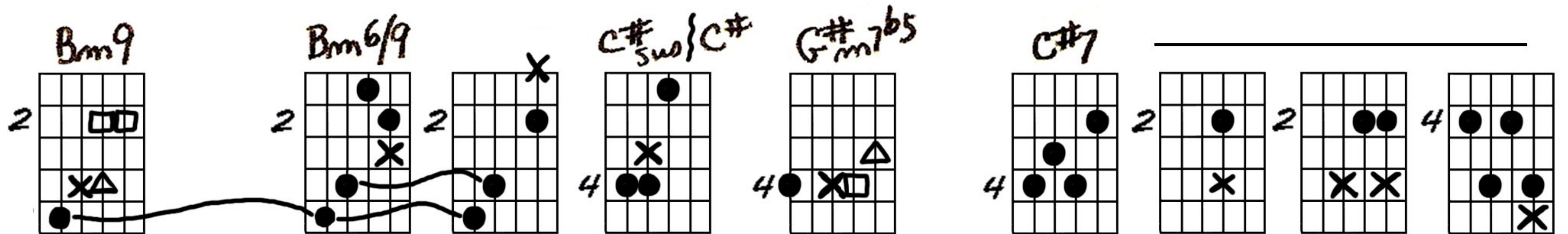
scale



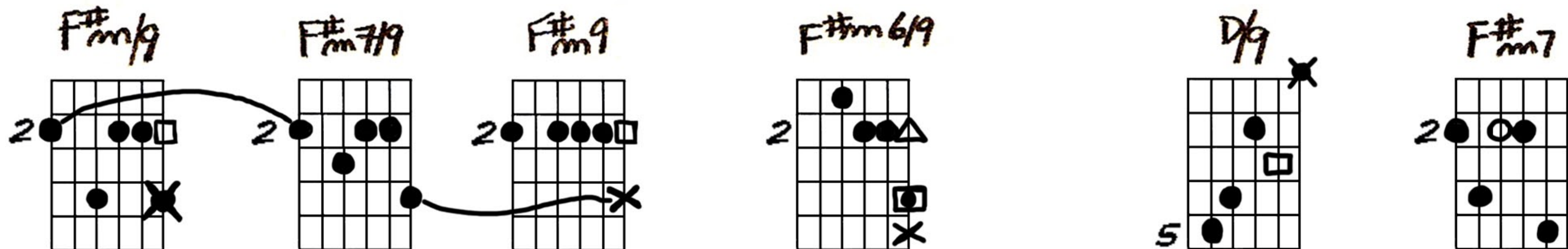
What are you do - ing the rest of your life? North and south and east and



west of your life? I have on - ly one re - quest of your life



that you spend it all with me. All the sea - sons and the



times of your days, all the nick - les and the dimes of your days,

Handwritten guitar chord diagrams for measures 13-15:

- Measure 13: $B(m)11$
- Measure 14: A (with a slur over the first two frets) and (7)
- Measure 15: $B(m)9$, $Bm7/9$, $Bm9$, $G\#m7/11$, and $C\#7$

Musical notation for measures 13-15, showing a treble clef, a key signature of two sharps (F# and C#), and a 4/4 time signature. The melody consists of eighth and quarter notes.

13 let the rea - sons and the rhymes of your days _____ all be - gin and end with

Handwritten guitar chord diagrams for measures 16-18:

- Measure 16: $F\#7$
- Measure 17: $F\#$ and $F\#$
- Measure 18: $G\#m7b5/11$ and $C\#7$

Musical notation for measures 16-18, continuing the melody and accompaniment.

16 me. _____ I want to see your face in ev - 'ry kind of

Handwritten guitar chord diagrams for measures 19-21:

- Measure 19: $F\#MAJ7$
- Measure 20: $G\#m7/11^{(b5)}$, $G\#m7/11$, $C\#7b9$, $C\#7b9$, $F\#9$, $F\#$, and $F\#7$

Musical notation for measures 19-21, showing a treble clef, a key signature of two sharps, and a 4/4 time signature.

19 light, in fields of dawn and for - ests of the night. And when you

Handwritten guitar chord diagrams for measures 22-24:

- Measure 22: $Fm7/11$
- Measure 23: $Bb7$, $Eb7$, Eb , $Em7/11$, and $A7b9$

Musical notation for measures 22-24, showing a treble clef, a key signature of two sharps, and a 4/4 time signature.

22 stand be - for the can - dles on a cake, Oh, let me be the one to hear the si - lent wish you

25

D7 C#7 F#m9 F#m7/9 F#m9 F#m6/9

make. Those to - mor - rows wait - ing deep in your eyes, _____ in the world of love you

28

D9 F#m7 B(m)11 A (7) B(m)9 Bm7/9

keep in your eyes, _____ I'll a - wak - en what's a - sleep in your eyes, _____

31

Bm9 Bm6/9 C#11 C#9 C#7+

_____ it may take a kiss or two. _____ Through

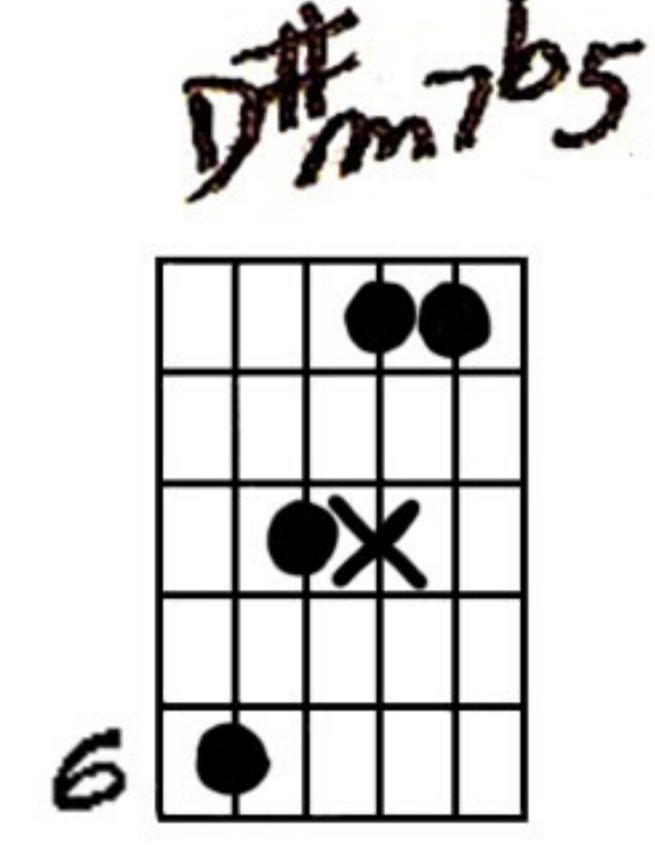
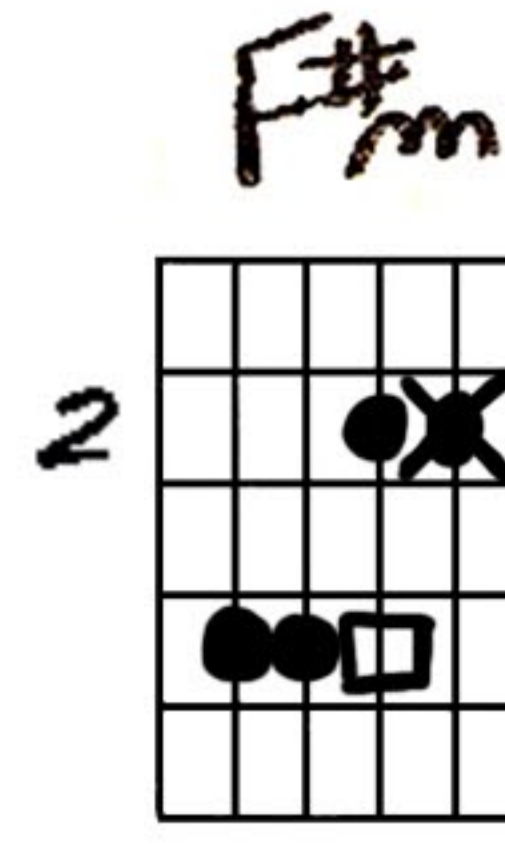
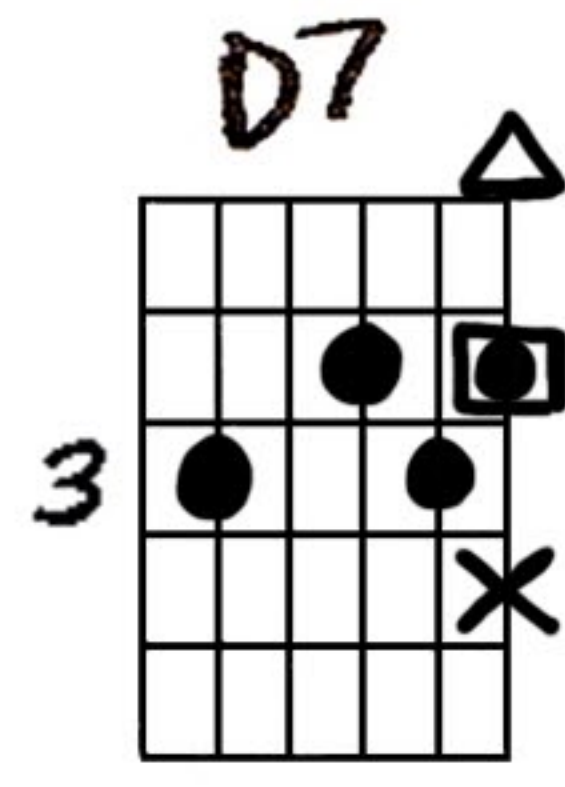
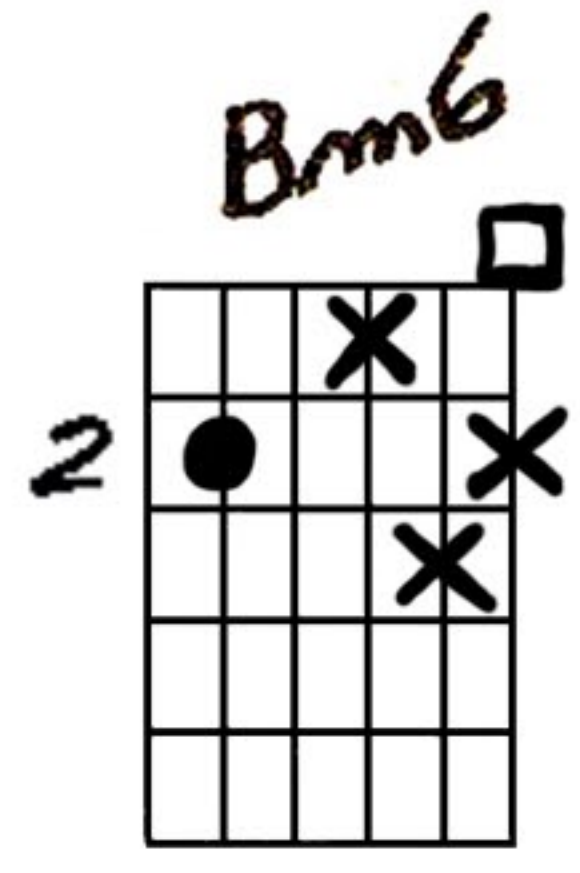
34

D6 open D6 G#m7b5 C#7 D7 F#m

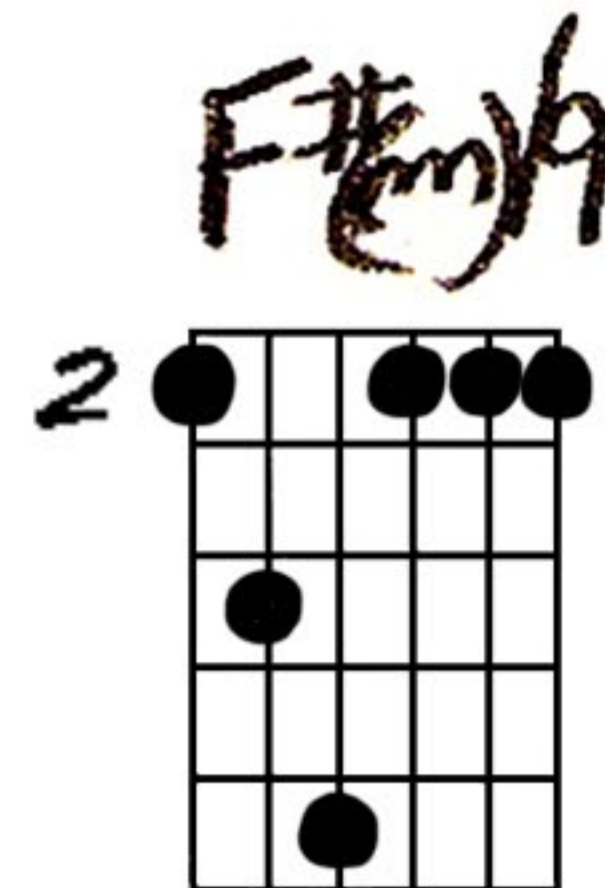
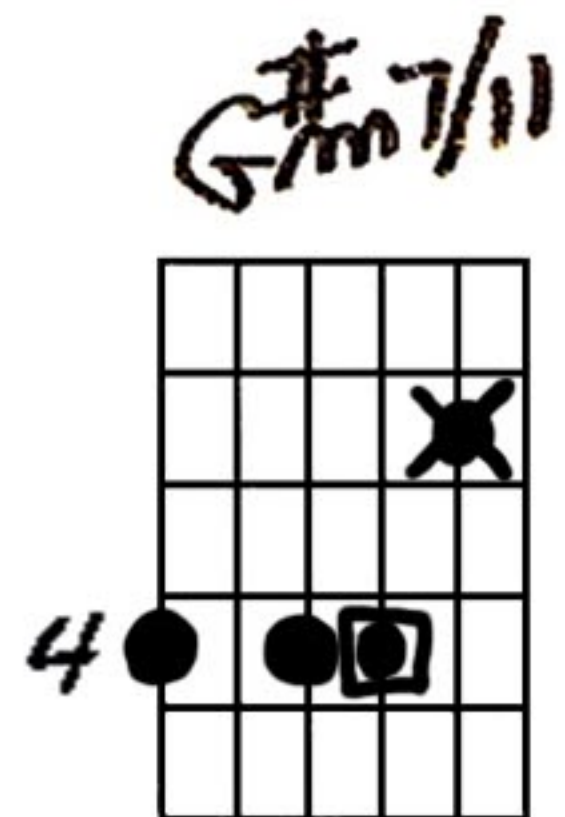
all of my life, _____ Sum - mer, Win - ter, Spring and Fall of my life, _____

Ted Greene
Arrangement

WHAT ARE YOU DOING THE REST OF YOUR LIFE? - P. 4



37 *p* all I ev - er will re - call of my life is



39 all of my life with you.