

WE'RE OFF TO SEE THE WIZARD

Ted Greene
©1-12-91

* = [] [] [] [] [] []
◆ = [] [] [] [] [] []

(this piece is in 12/8 time)

INTRO

C GMAJ9 C F#m7(b5)

1

Em Em C#m7(b5) G C/D

3

Bm Am - D G GMAJ7 C/9 - Cm6

should be ◆'s

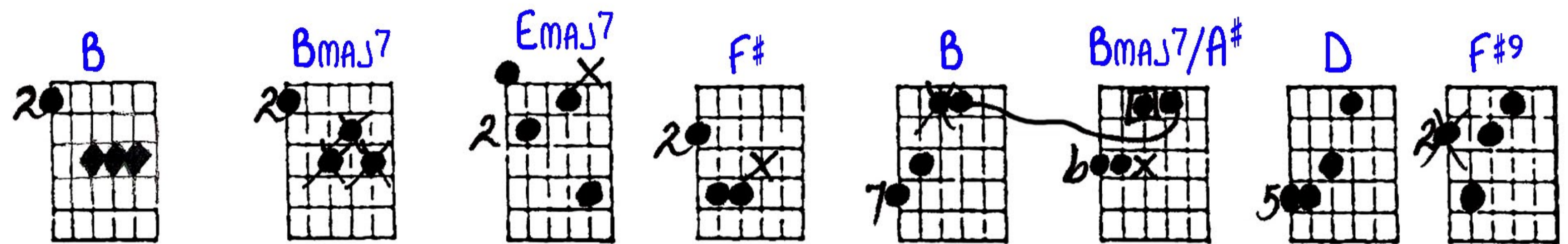
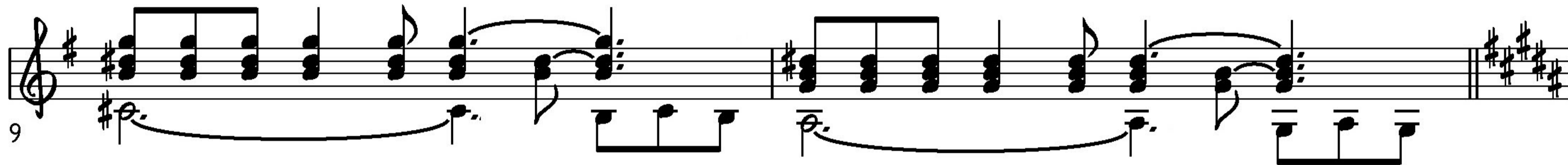
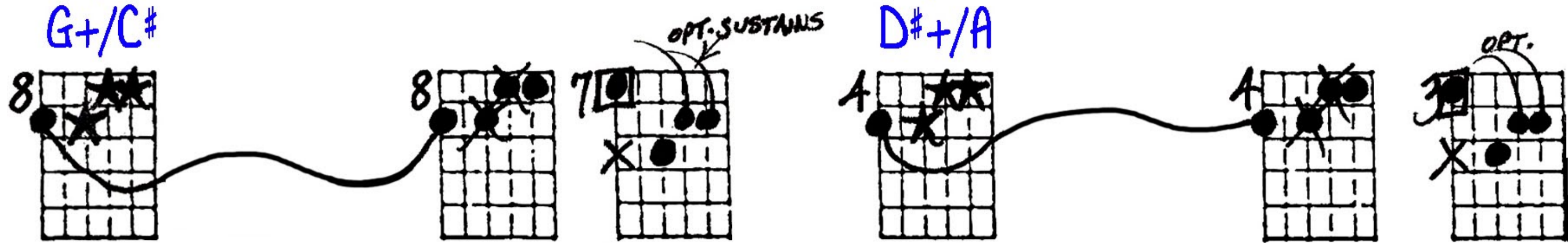
5

G/9 (sus) CMAJ7 D Em Em6 A9 D7

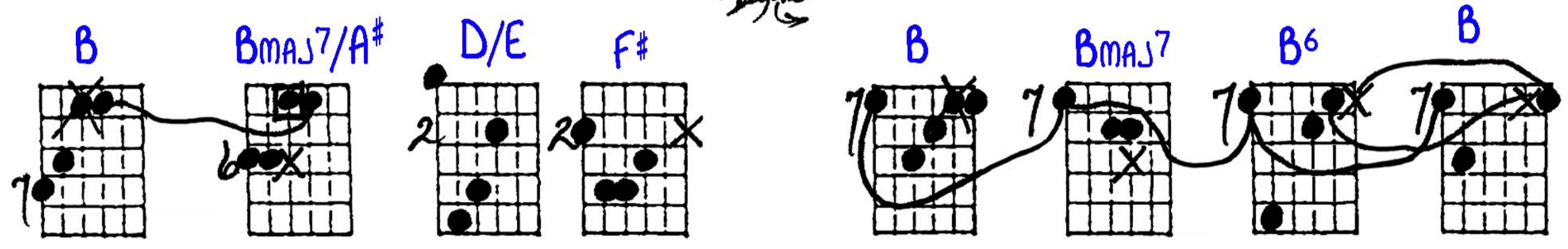
7

C#9(b5)
B+/C#
G+/C#

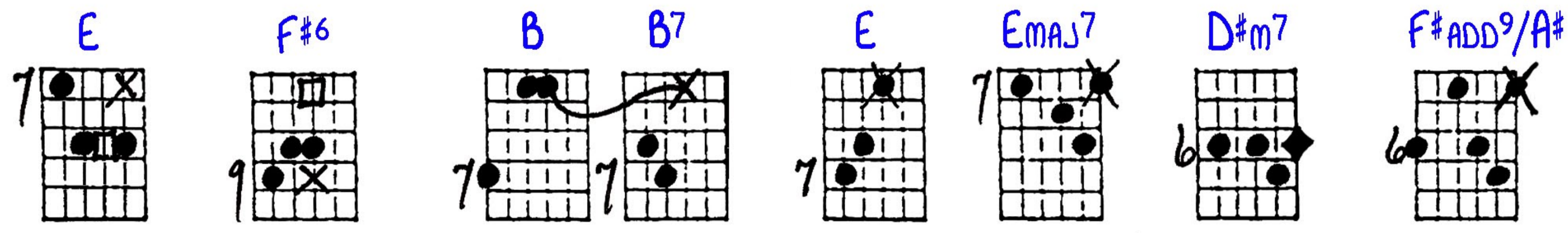
A9(b5)
B+/A
D#+/A



the song begins here



D#m7
G#9(SUS)/A#



17

G#m11 *C#7* *C#m11* *F#7* *E* *F#7* *B* *G#m7*

ev - er a Wiz there was. If ev - er, oh ev - er a Wiz there was, the

19

C#m7 *F#7* *B* *B7* *E* *EMAJ7* *D#m7* *G#m7(b5)/D*

Wiz - ard of Oz is one be - cause, be - cause, be - cause, be - cause, be -

21

C#7 *BADD9/D#* *C#m7(b5) Em6* *C#7* *F#* *C#+/F# F#m(MAJ7)* *F#9* *F#7*

cause, be - cause of the won - der - ful things he does.

23

A *E* *D* *F#7* *B* *BMAJ7* *B6* *B*

We're off to see the Wiz - ard, the

25

Fm7(b5) *Em6* *B/D#* *F#7* *Fm7(b5)* *Em6* *B/D#*

won - der - ful Wiz - ard of Oz! We're won - der - ful Wiz - ard of Oz!