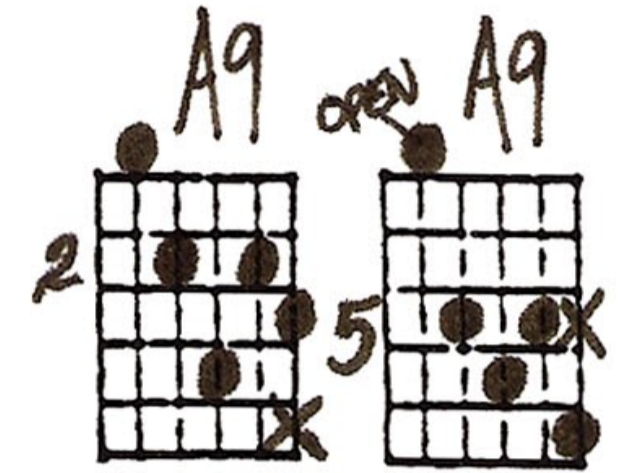
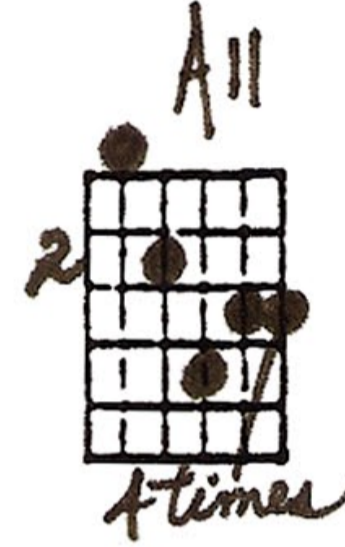
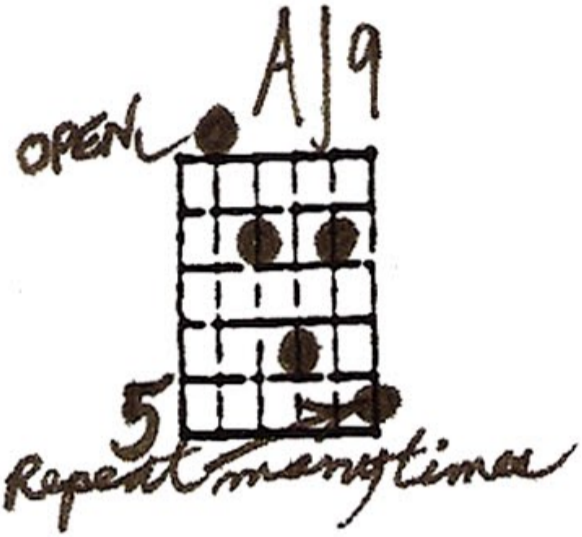
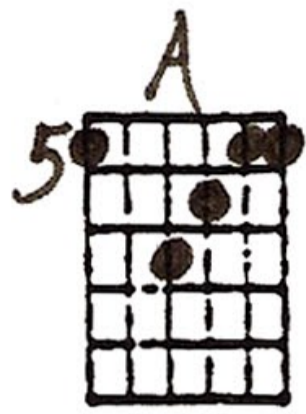


SOMETHING

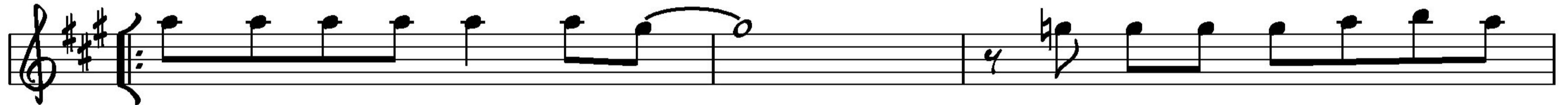
Ted Greene
© 1-10-93

5-7-92

Solo Guitar



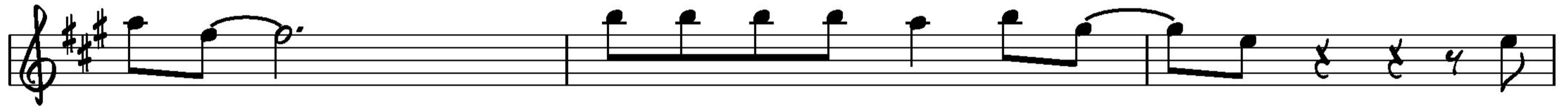
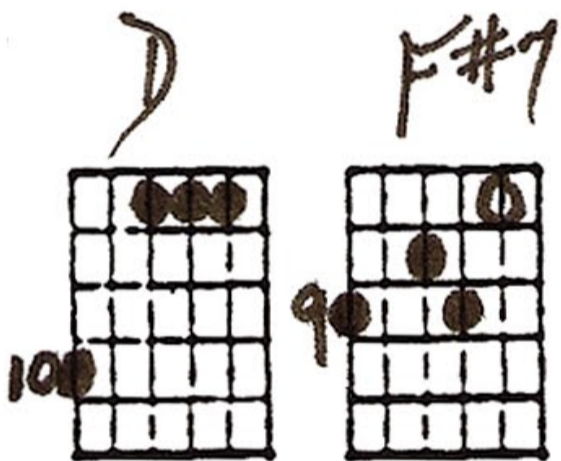
Key of A



1. Some - thing in the way she moves, —
2. Some - thing in the way she moves, —

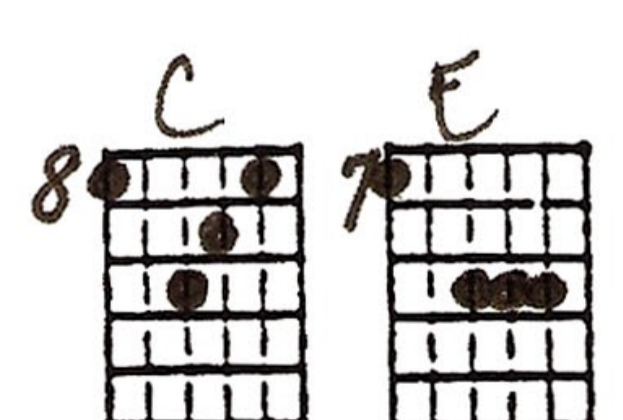
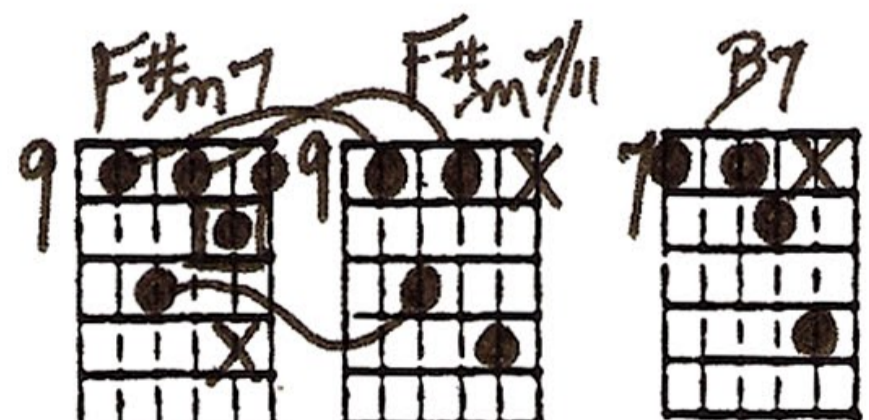
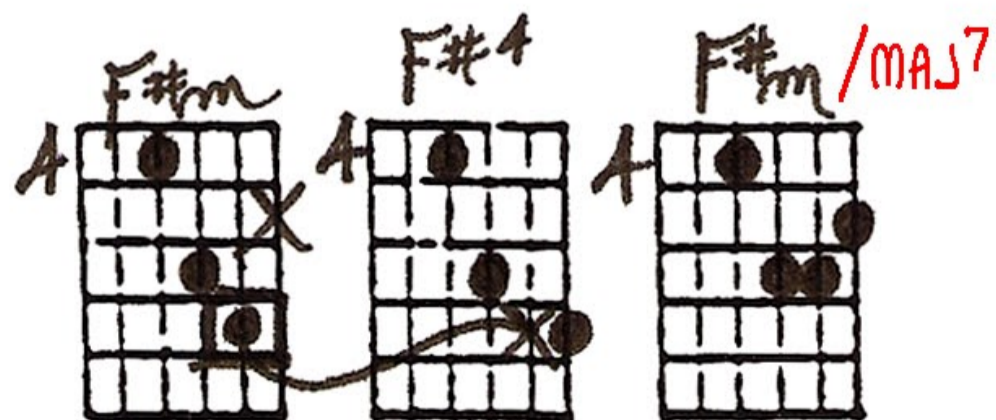
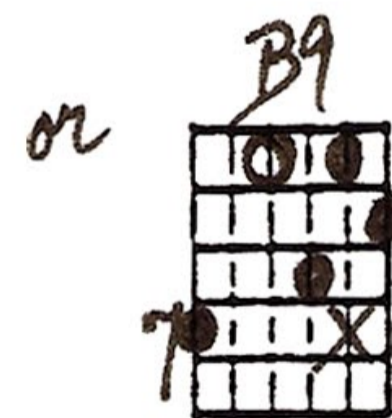
at - tracts me like no oth - er
and all I have to do is

- PASSING CHORDS -

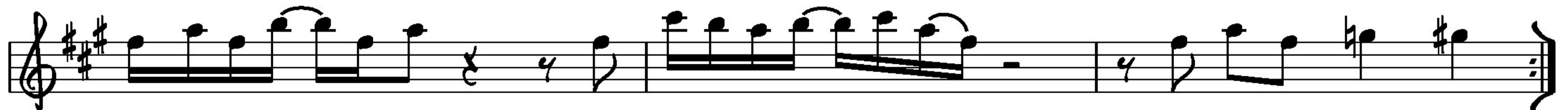


lov - er. —
think of her.

Some-thing in the way she woos — me. I
Some-thing in the way she show — me.



To Coda



don't want to leave her now, you know I be lieve and how.

Handwritten guitar chord diagrams for the first section:

- F#**: Standard F# chord.
- F#**: F# chord with a circled bass line.
- A#m/E#**: A#m chord with E# in the bass.
- D#m**: D#m chord with a circled bass line.
- F#/C#**: F# chord with C# in the bass.

Handwritten note: *linger then*

Musical staff for the first section. A red arrow points to a note with the label "opt. melody note".

You're ask - ing me will my love grow, I don't
 You stick a - round, now it may show, I don't

Handwritten guitar chord diagrams for the second section:

- B**: B chord with a circled bass line.
- E**: E chord with a circled bass line.
- B**: B chord with a circled bass line.
- F#**: F# chord with a circled bass line.
- A**: A chord with a circled bass line.

Handwritten notes: *desc chrom BASS-ALONE-FULL*, **BARRE**

Musical staff for the second section, including first and second endings and a D.C. al Coda instruction.

know, ___ I ___ don't know. know.
 know, ___ I ___ don't know.

Handwritten guitar chord diagrams for the final section:

- F#**: Standard F# chord.
- D**: D chord with a circled bass line.
- C**: C chord with a circled bass line.
- E**: E chord with a circled bass line.
- A/9**: A chord with 9th extension.

Handwritten note: **LAST CHORD**

Musical staff for the final section, ending with a double bar line.