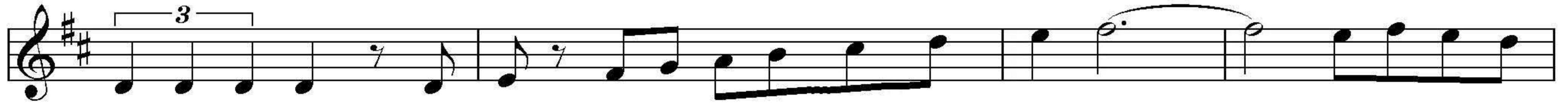


G G, G/B, A/c# A7 A7, D D, D/c#, Bm6/9 Bm6 Bm6



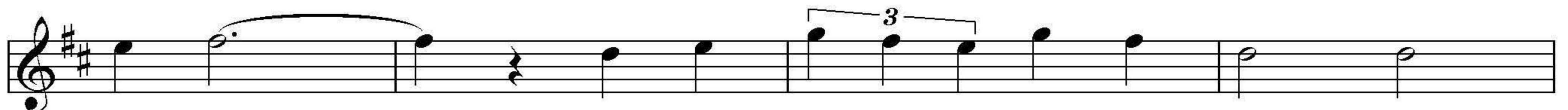
deep in you soul _____ says, "You were half, now you're whole." _____ No more

D6 D6, Bm/G# Bm7 Bm7, Em/G Em7 Em7, A13 A7 A7, D D, D D7 D7



hun - ger and thirst, but first, be a per - son who needs peo - ple. _____ Peo ple who need

GA7/D G G, Gm7 C7 Gm, D G, Bm7/D Bm7, Em7/D Em7, Bb/D A7

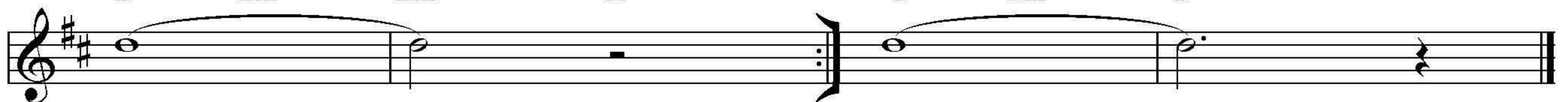


peo - ple _____ are the luck - i - est peo - ple in the

D19, Em7, A7, D19

1. D Bm7 Em7 A7
 D Bm7 Em7 A7

2. D Bm7 D6
 D Bm7 D6



world. _____ world. _____