

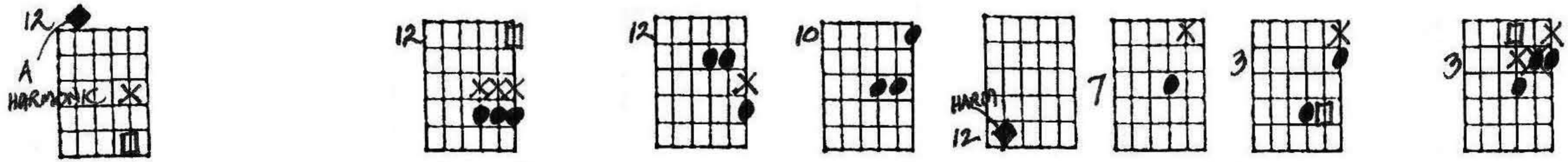
# PEOPLE

- JULE STINE

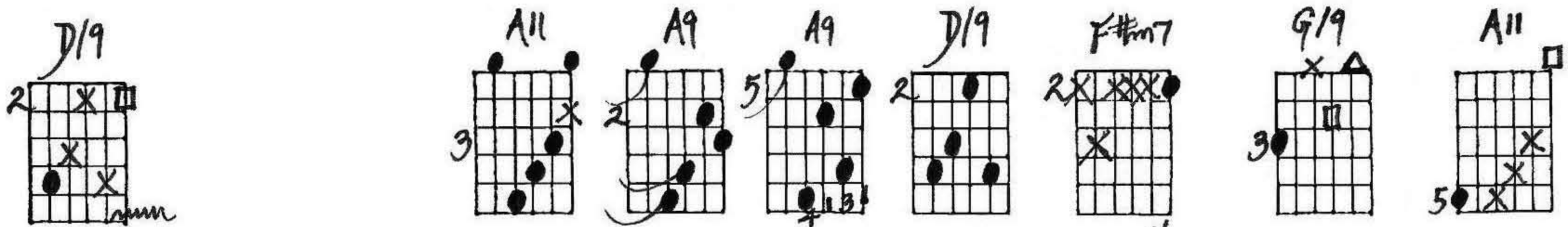
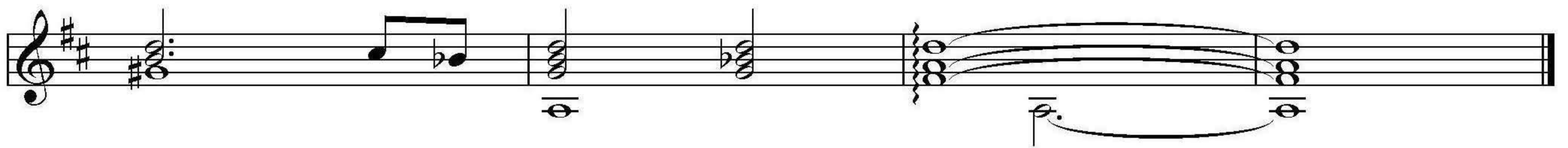
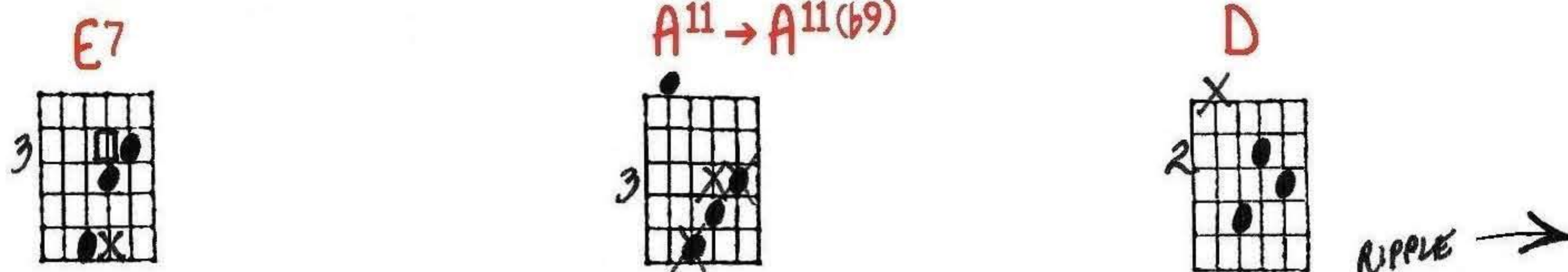
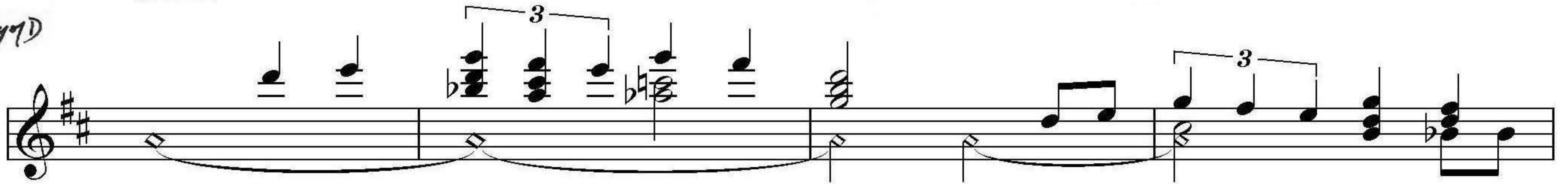
mm = RIPPLE RIGHT HAND FOR FILL  
s = SUSTAIN FROM PREVIOUS DIAGRAM

Many chords should have the bass struck 1st.

INTRO



Key of D



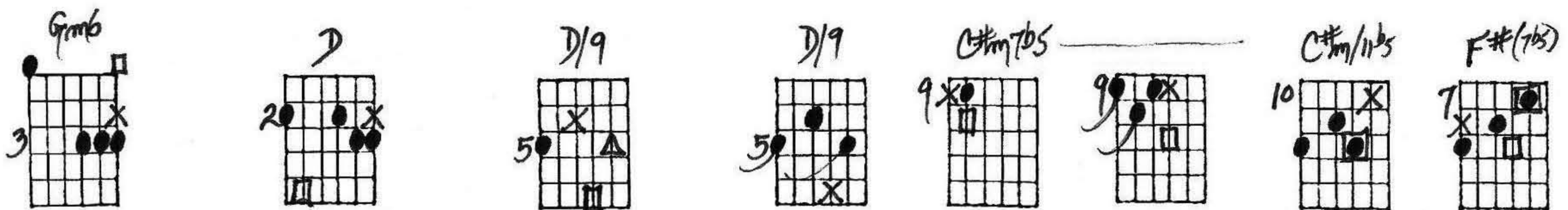
Ted's changes:

Standard changes:

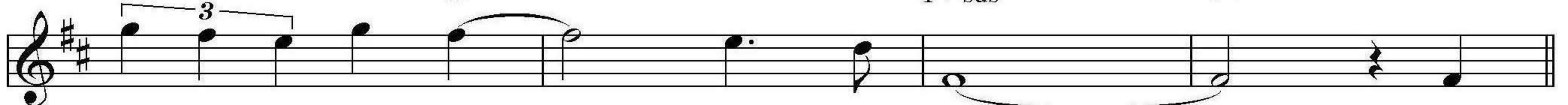
D Gm6 D Em7 A7  
D A7 D D Bringing all these X's in gradually Em7 A7



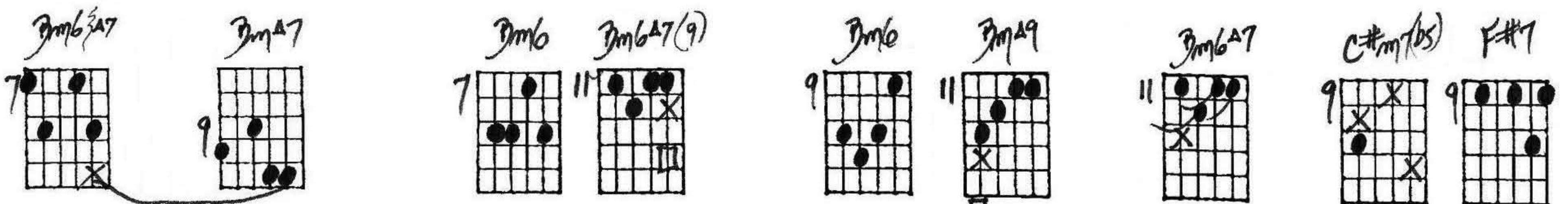
Peo - ple, peo - ple who need peo - ple are the



Gm6 D D/9 D/9 C#m7(b5) C#m7(b5) F#(7b5)  
G D C#m7(b5) F#7 F#7

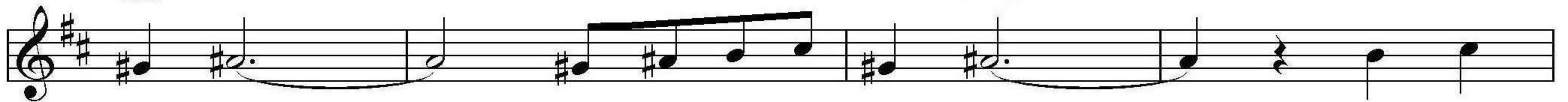


luck - i - est peo - ple in the world. We're



Bm  
Bm

FULL BARRE



chil - dren need - ing oth - er chil - dren and yet,