

# A FOGGY DAY

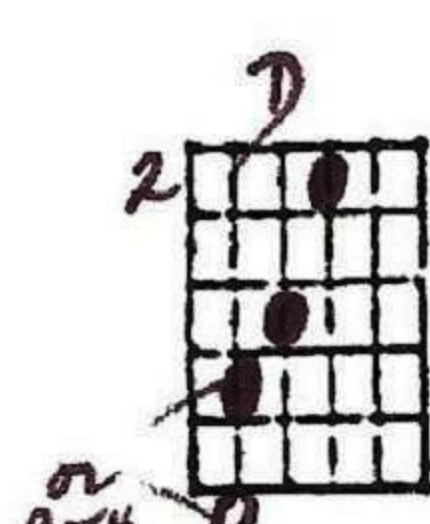
- GEORGE GERSHWIN

©arr.  
10-19-85  
Ted Greene

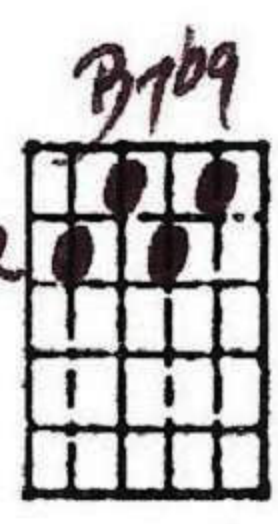
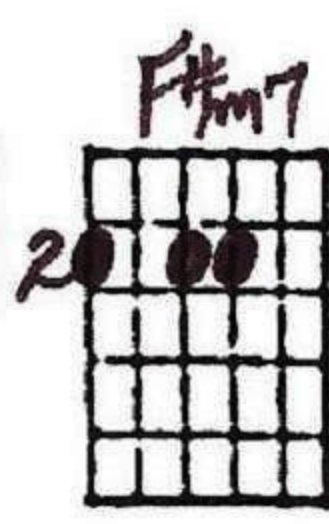
"OUTLINE" FORMAT: you must add some  
of the missing repeated melody notes

Solo GUITAR  
STYLE

Key of D



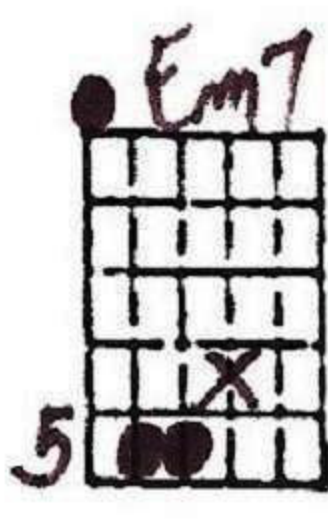
Dmaj7



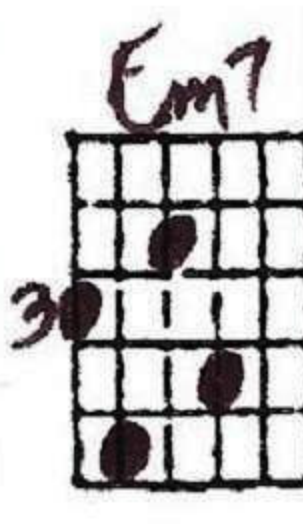
F#m7b5



B7b9



Em7



A7

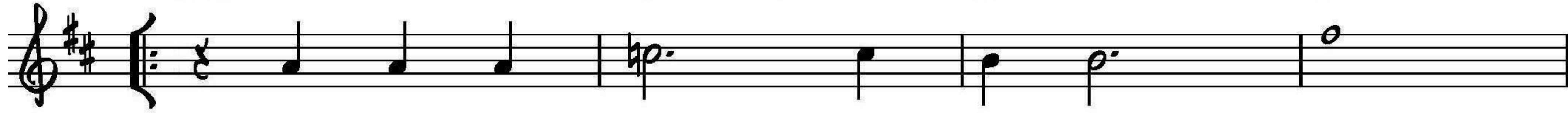


b9

USE R. HAND FOR GREAT

OR F. HAND

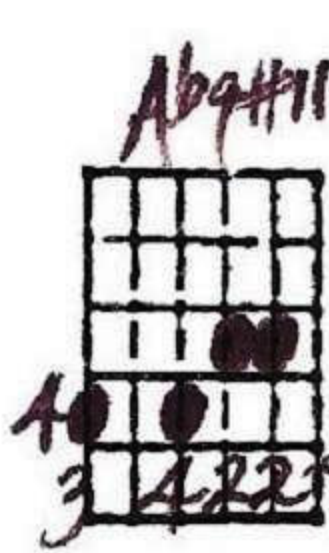
HERE



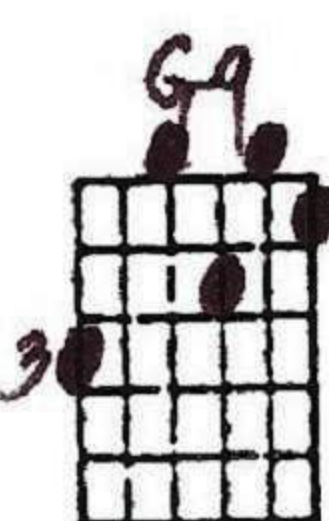
A fog - gy day in Lon - don town



D



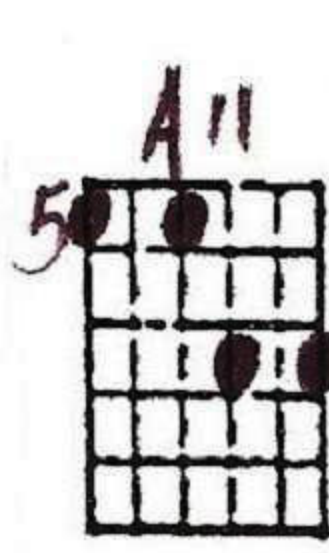
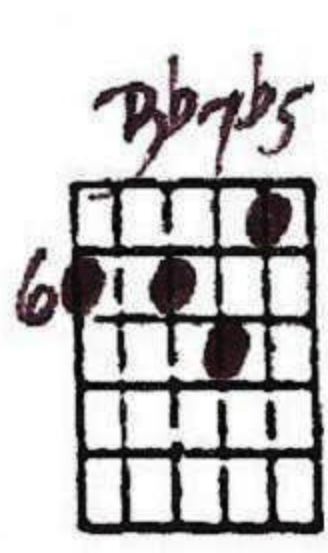
EASIER IN THE LONG RUN



Bm7b5



E7



Em7



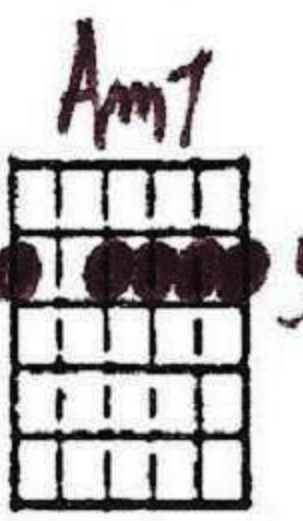
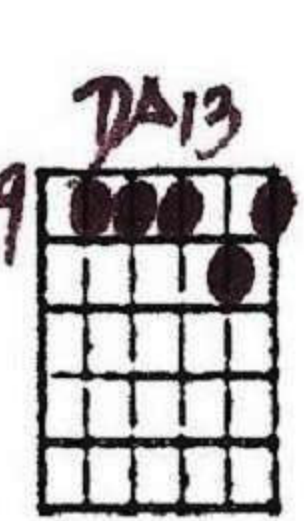
A7



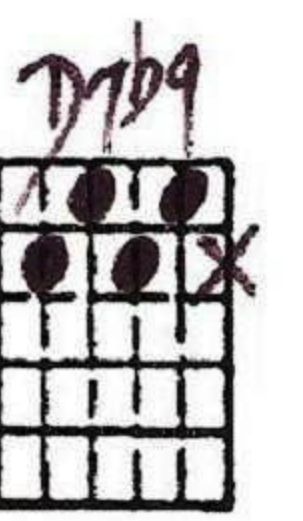
had me low and had me down.



Dmaj7



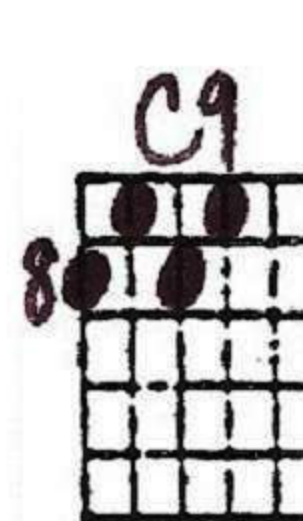
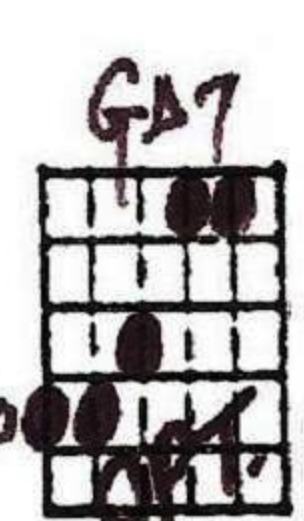
Am7



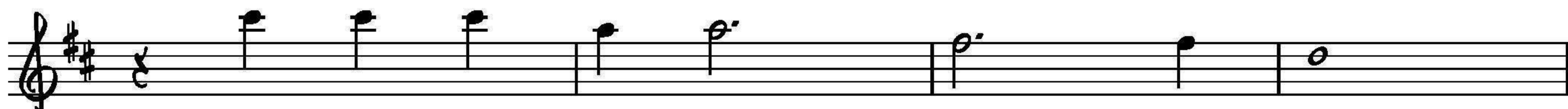
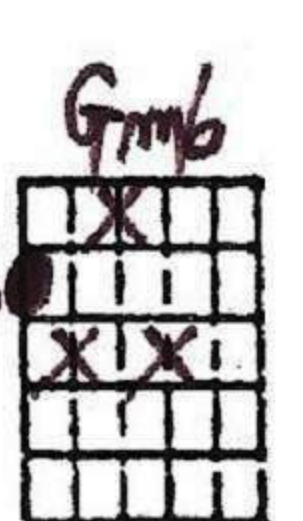
D7



Gmaj7



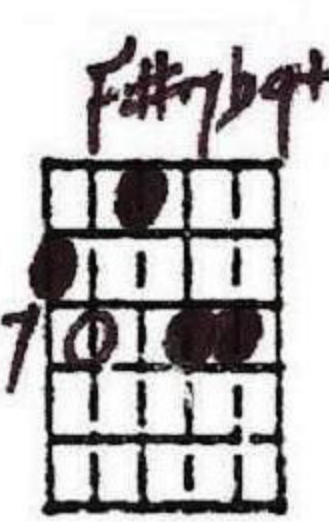
Gm6



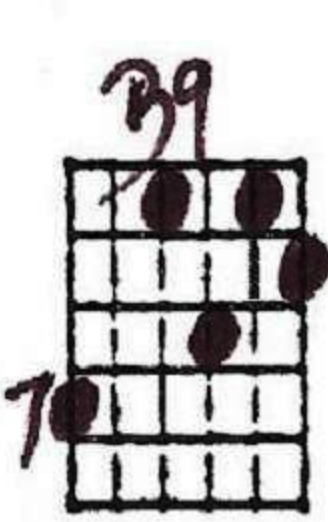
I viewed the morn - ing with a - larm,



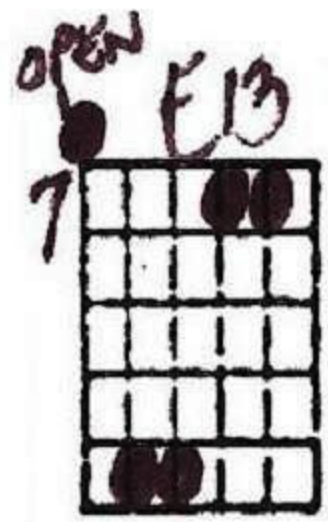
Dmaj7



F#m7



B7



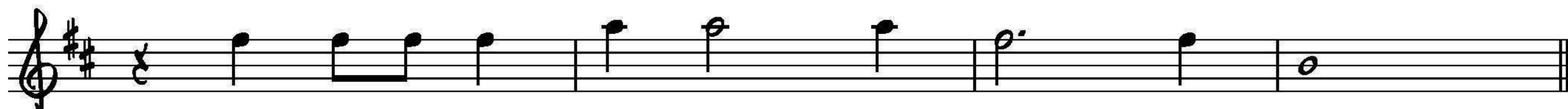
E9



Em7



A7



the Brit - ish Mus - e - um had lost it's charm.