

# BEBOP SOLOS AND PROGRESSIONS

M.M. ♩=176  
and up

Watch the slurs!

Use accents and volume differentiation

Learn one measure at a time  
(or 1/2 measure)

1)

10th position

$Bb^6/F$   $Eb^9$   $Bb^6/F$   $Bb7+$  or slide

$Eb^9$   $E^o7$   $Dm7$   $Bb/D$

$Dbm7$   $Gb^9$  optional slur  $Cm7$   $F^{11}$   $F7b9+$   $Bb^6$  vibrato

Detailed description: This exercise consists of three staves of music in the key of B-flat major (two flats). The first staff contains four measures with chords  $Bb^6/F$ ,  $Eb^9$ ,  $Bb^6/F$ , and  $Bb7+$ . The second staff contains four measures with chords  $Eb^9$ ,  $E^o7$ ,  $Dm7$ , and  $Bb/D$ . The third staff contains six measures with chords  $Dbm7$ ,  $Gb^9$ ,  $Cm7$ ,  $F^{11}$ ,  $F7b9+$ , and  $Bb^6$ . Fingering numbers (1-4) and slurs are provided for many notes. An 'optional slur' is indicated for the  $Gb^9$  chord. A 'vibrato' instruction is placed over the final note of the  $Bb^6$  chord.

Practice in all keys, down chromatically starting from key of Db, down to the key of D (learn in above key first of course).

2) Variation

Mainly in the  
9th position

$A^6$   $D^9$   $A^6$

$Em^9$   $A7+b9$   $D^9$   $D\#^o7$

$A^6/E$   $Dm7$   $C\#m7$   $F\#7b9$   $Bm7$

$E^{13}$   $A\Delta7$   $F\#7\#9$   $B^{13}$   $E^{13}$   $A^6$

Detailed description: This exercise consists of four staves of music in the key of A major (three sharps). The first staff contains three measures with chords  $A^6$ ,  $D^9$ , and  $A^6$ . The second staff contains four measures with chords  $Em^9$ ,  $A7+b9$ ,  $D^9$ , and  $D\#^o7$ . The third staff contains five measures with chords  $A^6/E$ ,  $Dm7$ ,  $C\#m7$ ,  $F\#7b9$ , and  $Bm7$ . The fourth staff contains six measures with chords  $E^{13}$ ,  $A\Delta7$ ,  $F\#7\#9$ ,  $B^{13}$ ,  $E^{13}$ , and  $A^6$ . Fingering numbers (1-3) and slurs are provided for many notes.

Practice as above.

3) Variation

The image shows a handwritten musical score for a bebop variation, consisting of four staves of music. The key signature is three flats (B-flat major/C minor). The notation includes various chord symbols and melodic lines.

**Staff 1:** Chord symbols:  $D\flat\Delta 7$ ,  $C_m 7\flat 5$ ,  $F 7\# 9$ ,  $B\flat_m 7$ ,  $E\flat 9$ .

**Staff 2:** Chord symbols:  $A\flat_m 9$ ,  $D\flat 7\# 9+$ ,  $G\flat 6/9$ ,  $F\#_m 7$ ,  $B^{13}$ .

**Staff 3:** Chord symbols:  $F_m 7$ ,  $(B\flat_m 7)$ ,  $E_m 7$ ,  $(A^{11})$ ,  $E\flat_m 7$ .

**Staff 4:** Chord symbols:  $A\flat 7\# 9+$ ,  $D\flat 6/9$ ,  $B\flat 7\# 9+$ ,  $E\flat^{13}$ ,  $A\flat 7\# 9+$ ,  $D\flat\Delta 9$ .

# BEBOP LINES

TED GREENE  
1980-08-30

From "Shaw 'Nuff" (SSCJ)

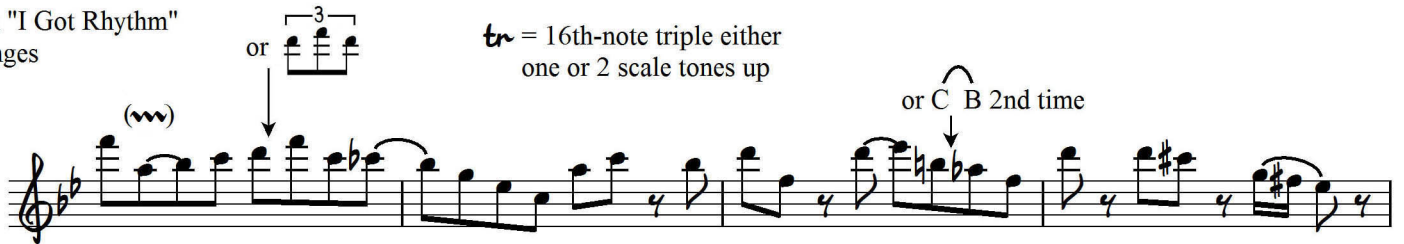
Al Haig pickup to head

Head:



with "I Got Rhythm" changes

tr = 16th-note triple either one or 2 scale tones up



\* see below



Bird solo adapted for guitar

Mostly  
10th  
position

Bb Gm7 Cm7 F7 Dm7 Dbm7 Cm7 F7



Fm7 Bb7 Eb Bb07





# BE BOP SOLOS + PROGRESSIONS

2-20-81  
© Ted Greene

WATCH THE SLURS!

USE ACCENTS + VOLUME DIFFERENTIATION

LEARN 1 MEASURE AT A TIME  
( $\frac{1}{2}$  MEASURE)

M.M. = 176 + UP

1  
TONE POSITION

Handwritten musical notation for the first staff, including notes, slurs, and fingerings. Chords above the staff include  $Bb6$ ,  $Eb9$ ,  $Bb6$ ,  $Bb7+$ ,  $Eb9$ , and  $E07$ . Fingerings are indicated with numbers 1-3. A note is marked "or slide".

Handwritten musical notation for the second staff, including notes, slurs, and fingerings. Chords above the staff include  $Dm7$ ,  $Bb7$ ,  $Dm7$ ,  $Gb9$ ,  $Cm7$ ,  $F11$ ,  $F7b9+$ , and  $Bb6$ . A note is marked "VIBRATO".

PRACTICE IN ALL KEYS, DOWN CHROMATICALLY STARTING FROM KEY OF  $D$ , DOWN TO THE KEY OF  $D$  (LEARN IN ABOVE KEY 1ST OF COURSE)

2  
MAINLY THE 9th POS.

Handwritten musical notation for the third staff, including notes, slurs, and fingerings. Chords above the staff include  $A6$ ,  $D9$ ,  $A6$ ,  $Em9$ ,  $A7b9+$ , and  $D6/9$ .

PRACTICE AS ABOVE

Handwritten musical notation for the fourth staff, including notes, slurs, and fingerings. Chords above the staff include  $A6$ ,  $Dm7$ ,  $Cm7$ ,  $F7b9$ ,  $Bm7$ ,  $E13$ ,  $A7$ ,  $F7b9$ ,  $B13$ ,  $E13$ , and  $A6$ .

3  
VARIATION

Handwritten musical notation for the fifth staff, including notes, slurs, and fingerings. Chords above the staff include  $Dm7$ ,  $Cm7$ ,  $F7b9$ ,  $Bm7$ ,  $Eb9$ ,  $Abm9$ ,  $D7b9+$ ,  $Gbb9$ ,  $F7m7$ , and  $B13$ .

Handwritten musical notation for the sixth staff, including notes, slurs, and fingerings. Chords above the staff include  $Fm7$ ,  $Bm7$ ,  $Em7$ ,  $A11$ ,  $Ebm7$ ,  $Ab7b9+$ ,  $Dbb9$ ,  $Bb7b9+$ ,  $Eb13$ ,  $Ab7b9+$ , and  $Dbb9$ .

Empty musical staves for practice.

Handwritten musical notation for the seventh staff, including notes, slurs, and fingerings.

Handwritten musical notation for the eighth staff, including notes, slurs, and fingerings.



from SHAW WAKE (SSC) BEBOP LINES

AL HAS PICKUP TO HEAD

HEAD: w/ 160T RHYTHM CHANGES  
(m)

tr = 16th note triplet scale tones up either one or 2 scale tones up or C<sup>b</sup> 2nd time

Handwritten musical notation for the first system. The treble clef staff contains a melodic line with various rhythmic values and accidentals. The bass clef staff contains a bass line with chords and notes. Annotations include "AL HAS PICKUP TO HEAD" and "HEAD: w/ 160T RHYTHM CHANGES (m)".

mostly 10th

BIRD SOUNDS ADAPTED FOR GUITAR

Handwritten musical notation for the second system. The treble clef staff contains a melodic line with various rhythmic values and accidentals. The bass clef staff contains a bass line with chords and notes. Annotations include "mostly 10th" and "BIRD SOUNDS ADAPTED FOR GUITAR".

\*

Handwritten musical notation for the third system. The treble clef staff contains a melodic line with various rhythmic values and accidentals. The bass clef staff contains a bass line with chords and notes. An annotation "\*" is present.