

Chicago Blues ala Jimmy Reed

Ted Greene, 1990-08-17

Playing order: ● × □ △
○ = opt.

Back-up or Solo format

Laid back, but strong shuffle feel

E7

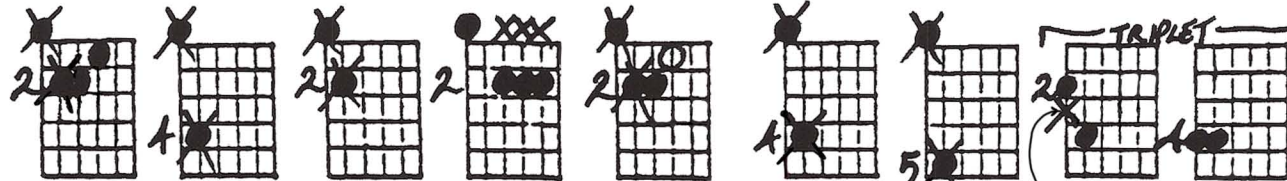
Hammer-on's

Key of E



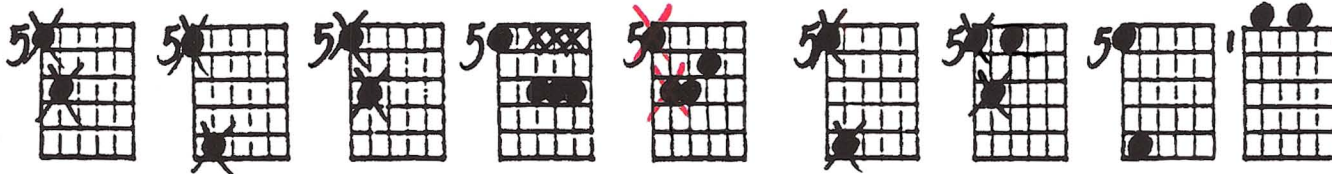
Hammer-on's

Hammer-on's



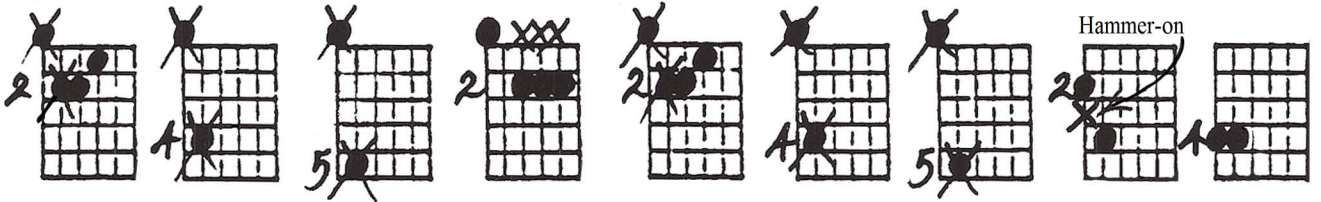
A7

Hammer-on's



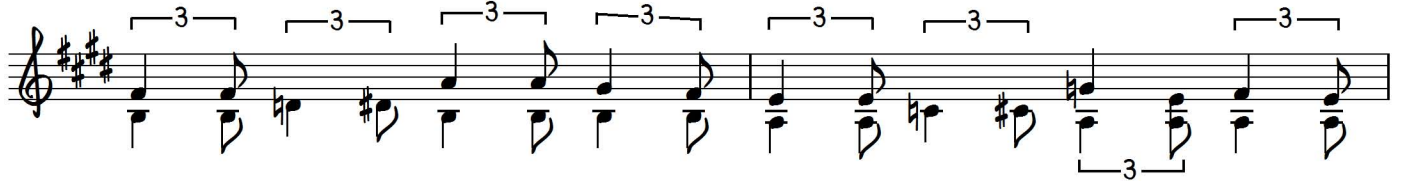
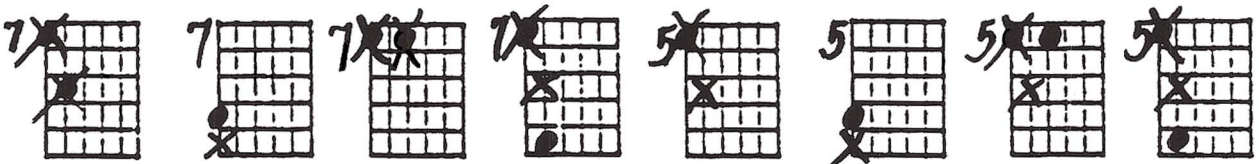
E7

Hammer-on's



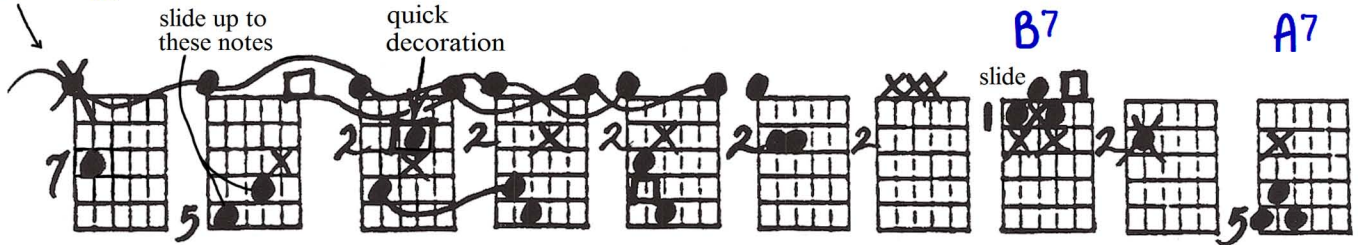
B7

A7



E open from pulled-off A
Even a "lift-off" will do the job here on most guitars.

E7



There are all kinds of tiny details hiding in the chronological symbols here (• X X and such) that must be heeded if you want this thing to sound really cool. My advice (to avoid needless reading and re-reading of all these tortured diagrams: MEMORIZE AS YOU GO, one diagram or one bar at a time. Slow to meditum-slow is the desired tempo...and make it "groove" or it is not worth your time.

P.2
 BACKUP or
 SOLO format

CHICAGO BLUES ala Jimmy Reed

©8-17-90
 Ted Green

Laid back
 BUT STRONG
 SHUFFLE
 FEEL
 RHYME

the counting: one and two and three and four and etc.

Probably

E OPEN from PULLED OFF
 1
 Even a 'lift-off' will do the job here for most guitarists

There are all kinds of tiny details hiding in the chronological symbols here (•, x, x, & such) that must be heeded if you want this thing to sound real cool. My advice (to avoid needless reading & re-reading of all these tortured diagrams) is: MEMORIZE AS YOU GO, one diagram or one bar at a time. Slow to MED-SLOW is the desired tempo & make it groove or it's not worth your time.