

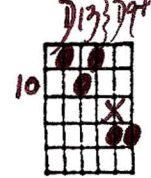
AIN'T MISBEHAVIN'

Harmonized Melody

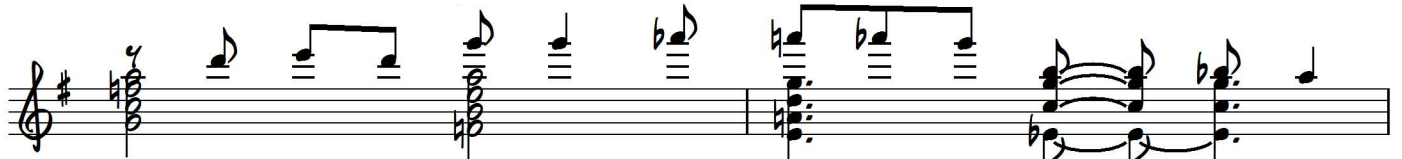
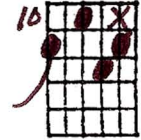
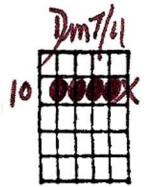
Playing order: ● X □ △
○ = opt.

Ensemble setting or solo.
Modern piano voicings and others.

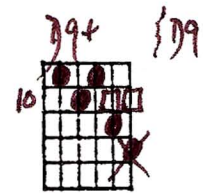
Key of G



1. No one to talk with, all by my - self,
3. I don't stay out late, don't care to go,

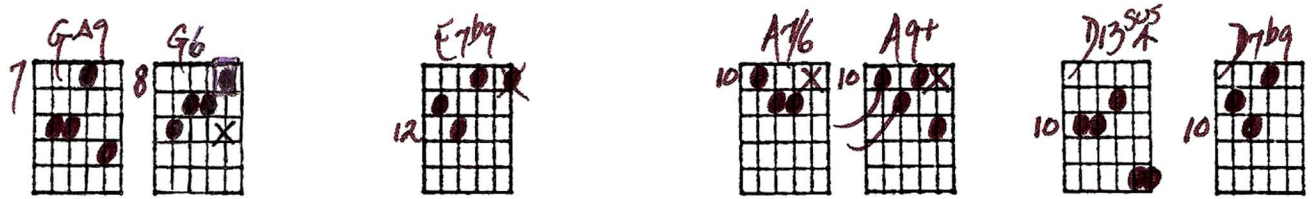
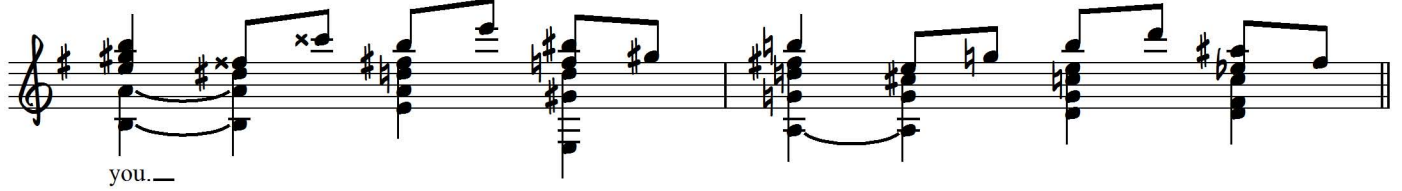
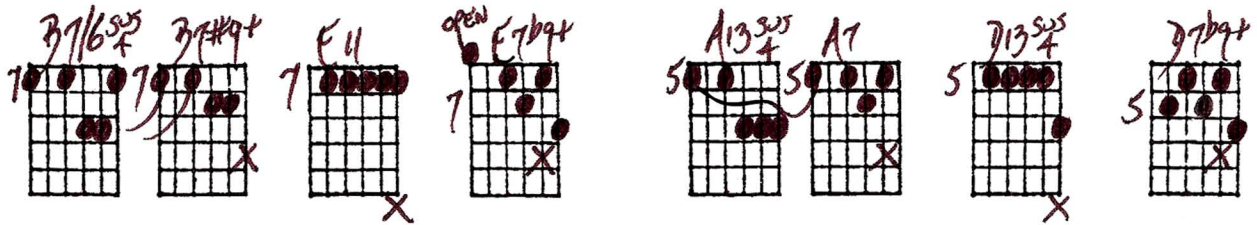


no one to walk with, but I'm hap - py on the shelf.
I'm home a - bout eight, just me and my ra - di - o,

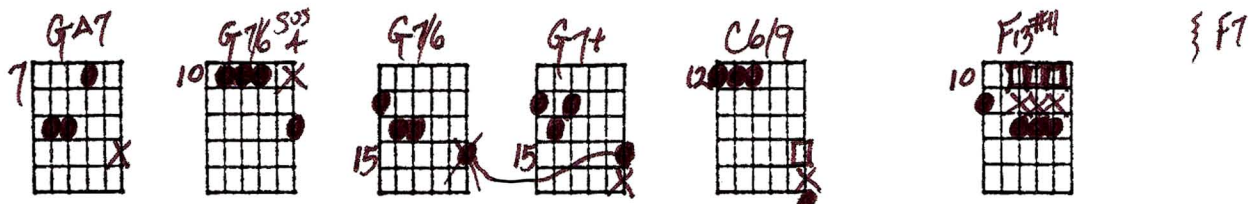


Ain't Mis - be - hav - in' I'm sav - in' my love for

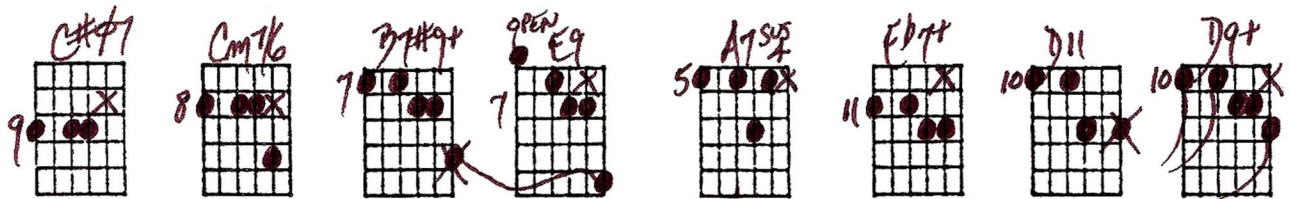
Ain't Misbehavin' -- Ted Greene (key of G) - p.2



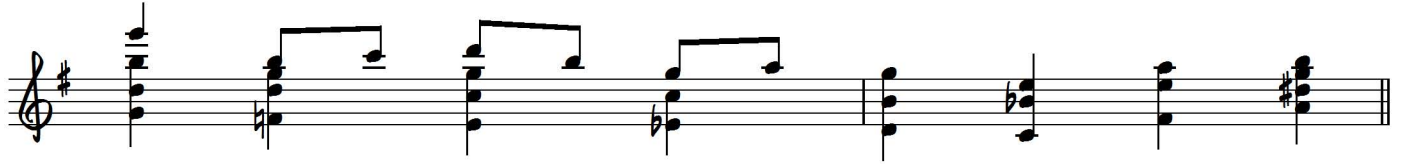
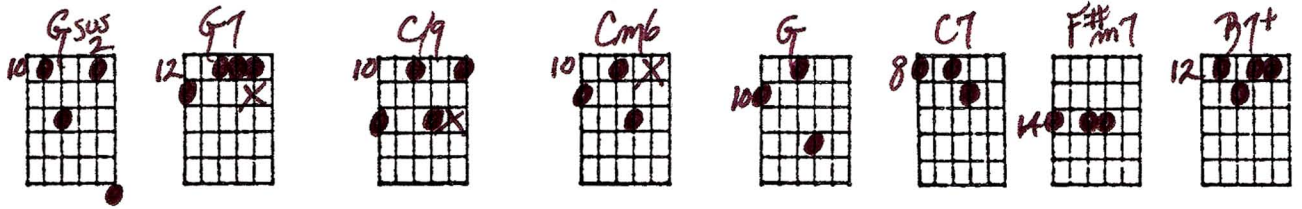
2. I know for cer - tain, the one I love,



I'm thru with flirt - in', it's just you I'm think - in' of,

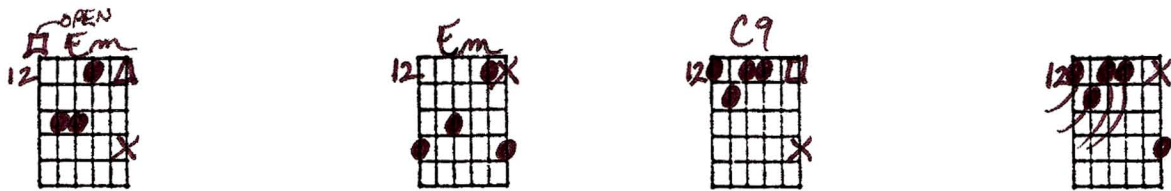


Ain't Mis - be - hav - in' I'm sav - in' my love for

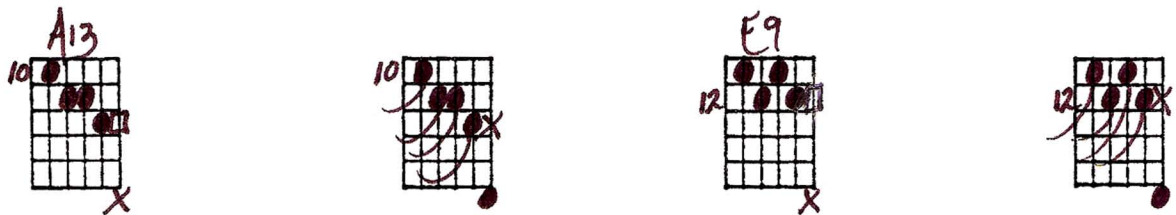


you. —

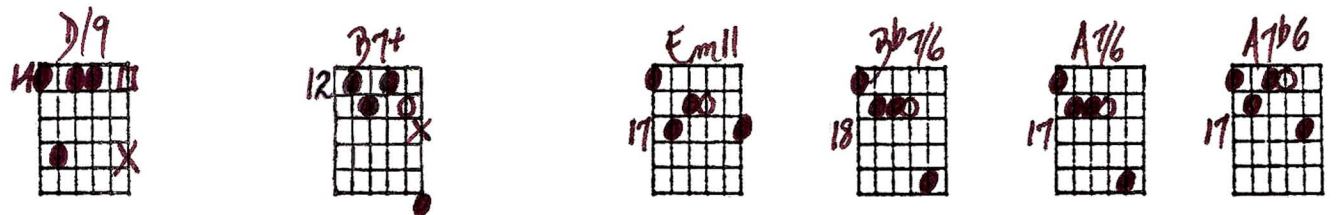
Bridge:



Like Jack Hor - ner in the cor - ner,



don't go no - where, what do I care?



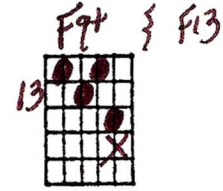
Your kiss - es are worth wait - ing



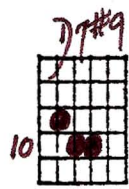
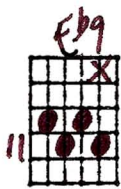
D.C. al Coda

for, be - - - lieve me.

Coda



you.



you.

ENSEMBLE SETTING
or SOLO
MODERN PIANO VOICINGS
and others

HARMONIZED
MELODY

AINT MISBEHAVIN' - FATS WALLER

SH-385
Ted Greene

Key of G
G^{SUS}2

F#m9

A7/6

D13sus4

Dm7/11

G13

C6/9

F9#11

G/9

open F7b9#11

hit on A bass from 10

A7

B9+11

B7/6sus4

B7#9+

E11

open F7b9

A13sus4

A7

D13sus4

D7b9+

E7b9

A/6

A9+

D13sus4

D7b9

G7

G7/6sus4

G7/6

G7+

C6/9

Cm7/6

B7#9+

open E9

A7sus4

Fb7+

D11

D9+

Gsus2

G7

C9

C7

F#m7

B7+

PRIME OPEN E7m

E7m

C9

A13

E9

D/9

B7+

E7m11

B7/6

A/6

A7b6

D9

E13

A13

D9

G13

G7#9

C9

F9#11

Fb9

D7#9

G7/6

D.C.

al. CODA

♩ = ♪
BLUES JAZZ FEEL

AINT MISBEHAVIN'

by FATS WALLER

7-4-74

MELODY IS IN
CORRECT
OCTAVE

A F#m7 Bm7 E7 A C#7 D G9b5 A F#m7 Bm7 E7 A (use any turnaround)

The first staff of music is written in treble clef with a key signature of two sharps (F# and C#) and a common time signature (C). The melody consists of the following notes: A4, B4, C5, B4, A4, G4, F#4, E4, D4, C#4, B3, A3, G3, F#3, E3, D3, C#3, B2, A2. Chords are indicated above the staff: A, F#m7, Bm7, E7, A, C#7, D, G9b5, A, F#m7, Bm7, E7, and A (use any turnaround). The staff ends with a double bar line and repeat dots.

A D7 G#7 C#7 F#m D7 B7 F#7 E C#m F#m B7 E F#7 B7 E7

The second staff of music is written in treble clef with a key signature of two sharps (F# and C#) and a common time signature (C). The melody consists of the following notes: A4, B4, C5, B4, A4, G4, F#4, E4, D4, C#4, B3, A3, G3, F#3, E3, D3, C#3, B2, A2. Chords are indicated above the staff: A, D7, G#7, C#7, F#m, D7, B7, F#7, E, C#m, F#m, B7, E, F#7, B7, and E7. The staff ends with a double bar line and the instruction "D.C. to 2nd end."