

THE SHADOW OF YOUR SMILE

Playing order: ● × □ ★
○ = opt.

Chord Melody

× or □ = double function

Chord diagrams for the first line of music:

- Em**: 4th fret, 2nd string, 4th fret, 3rd string, 2nd fret, 1st string, 2nd fret, 4th string, 3rd fret, 5th string, 2nd fret, 6th string, 2nd fret. (X on 4th string, 2nd fret)
- Em7**: 7th fret, 2nd string, 4th fret, 3rd string, 2nd fret, 1st string, 2nd fret, 4th string, 3rd fret, 5th string, 2nd fret, 6th string, 2nd fret. (X on 4th string, 2nd fret)
- F#m7**: 2nd fret, 2nd string, 2nd fret, 3rd string, 2nd fret, 1st string, 2nd fret, 4th string, 3rd fret, 5th string, 2nd fret, 6th string, 2nd fret. (// on 6th string)
- C9+11**: 7th fret, 2nd string, 4th fret, 3rd string, 2nd fret, 1st string, 2nd fret, 4th string, 3rd fret, 5th string, 2nd fret, 6th string, 2nd fret. (3 4 2 2)
- B9**: 4th fret, 2nd string, 4th fret, 3rd string, 2nd fret, 1st string, 2nd fret, 4th string, 3rd fret, 5th string, 2nd fret, 6th string, 2nd fret.
- F9**: 1st fret, 2nd string, 1st fret, 3rd string, 1st fret, 1st string, 1st fret, 4th string, 1st fret, 5th string, 1st fret, 6th string, 1st fret.

Musical staff for the first line of lyrics:

The Shad - ow of Your Smile when you are

Chord diagrams for the second line of music:

- Em/A**: 1st fret, 2nd string, 1st fret, 3rd string, 1st fret, 1st string, 1st fret, 4th string, 1st fret, 5th string, 1st fret, 6th string, 1st fret.
- Em**: 4th fret, 2nd string, 4th fret, 3rd string, 2nd fret, 1st string, 2nd fret, 4th string, 3rd fret, 5th string, 2nd fret, 6th string, 2nd fret. (X on 4th string, 2nd fret)
- A**: 2nd fret, 2nd string, 2nd fret, 3rd string, 2nd fret, 1st string, 2nd fret, 4th string, 3rd fret, 5th string, 2nd fret, 6th string, 2nd fret.
- Em**: 4th fret, 2nd string, 4th fret, 3rd string, 2nd fret, 1st string, 2nd fret, 4th string, 3rd fret, 5th string, 2nd fret, 6th string, 2nd fret. (X on 4th string, 2nd fret)
- Em7**: 7th fret, 2nd string, 4th fret, 3rd string, 2nd fret, 1st string, 2nd fret, 4th string, 3rd fret, 5th string, 2nd fret, 6th string, 2nd fret. (X on 4th string, 2nd fret)
- A7**: 5th fret, 2nd string, 5th fret, 3rd string, 4th fret, 1st string, 4th fret, 4th string, 5th fret, 5th string, 4th fret, 6th string, 4th fret.
- Eb9+11 no3**: 10th fret, 2nd string, 10th fret, 3rd string, 9th fret, 1st string, 9th fret, 4th string, 10th fret, 5th string, 9th fret, 6th string, 9th fret.

Musical staff for the second line of lyrics:

gone will col - or all my dreams and

Chord diagrams for the third line of music:

- D9**: 7th fret, 2nd string, 7th fret, 3rd string, 6th fret, 1st string, 6th fret, 4th string, 7th fret, 5th string, 6th fret, 6th string, 6th fret.
- A67+11**: 3rd fret, 2nd string, 3rd fret, 3rd string, 2nd fret, 1st string, 2nd fret, 4th string, 3rd fret, 5th string, 2nd fret, 6th string, 2nd fret.
- G7**: 3rd fret, 2nd string, 3rd fret, 3rd string, 2nd fret, 1st string, 2nd fret, 4th string, 3rd fret, 5th string, 2nd fret, 6th string, 2nd fret.
- Db9+11 no3**: 7th fret, 2nd string, 7th fret, 3rd string, 6th fret, 1st string, 6th fret, 4th string, 7th fret, 5th string, 6th fret, 6th string, 6th fret.
- C13**: 7th fret, 2nd string, 7th fret, 3rd string, 6th fret, 1st string, 6th fret, 4th string, 7th fret, 5th string, 6th fret, 6th string, 6th fret.
- C19**: 7th fret, 2nd string, 7th fret, 3rd string, 6th fret, 1st string, 6th fret, 4th string, 7th fret, 5th string, 6th fret, 6th string, 6th fret.
- C7/6**: 3rd fret, 2nd string, 3rd fret, 3rd string, 2nd fret, 1st string, 2nd fret, 4th string, 3rd fret, 5th string, 2nd fret, 6th string, 2nd fret.

Musical staff for the third line of lyrics:

light the dawn. Look in - to my

Chord diagrams for the fourth line of music:

- F#m7**: 2nd fret, 2nd string, 2nd fret, 3rd string, 2nd fret, 1st string, 2nd fret, 4th string, 3rd fret, 5th string, 2nd fret, 6th string, 2nd fret.
- G7m/11**: 1st fret, 2nd string, 1st fret, 3rd string, 1st fret, 1st string, 1st fret, 4th string, 1st fret, 5th string, 1st fret, 6th string, 1st fret.
- F#m7/11**: 1st fret, 2nd string, 1st fret, 3rd string, 1st fret, 1st string, 1st fret, 4th string, 1st fret, 5th string, 1st fret, 6th string, 1st fret.
- B7+**: 5th fret, 2nd string, 5th fret, 3rd string, 4th fret, 1st string, 4th fret, 4th string, 5th fret, 5th string, 4th fret, 6th string, 4th fret.
- Em7**: 4th fret, 2nd string, 4th fret, 3rd string, 2nd fret, 1st string, 2nd fret, 4th string, 3rd fret, 5th string, 2nd fret, 6th string, 2nd fret.

Musical staff for the fourth line of lyrics:

eyes my love and see

12

all the love - ly things you are to

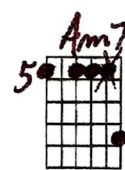
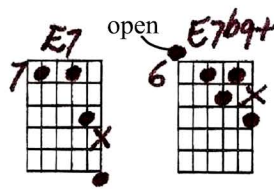
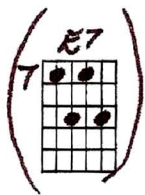
15

me. Our wist - ful lit - tle

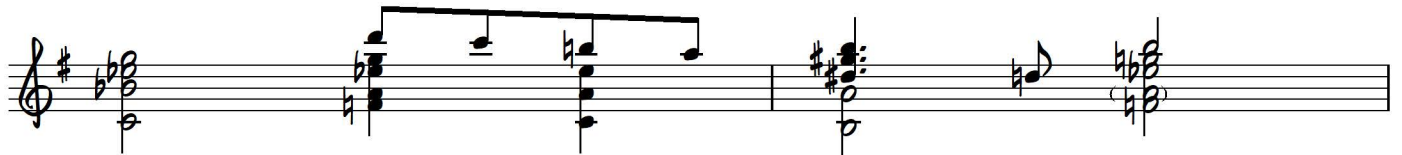
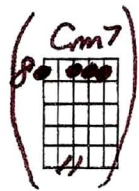
star was far too high,

a tear - drop kissed your lips and so did

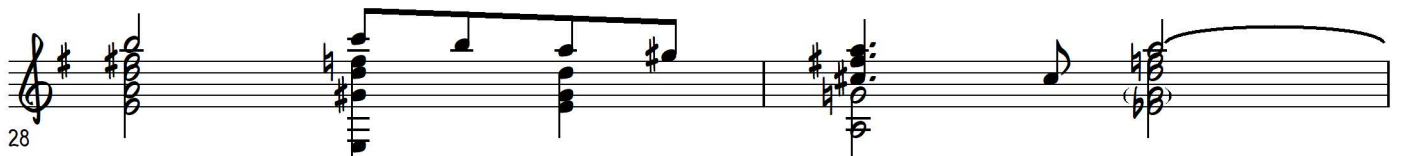
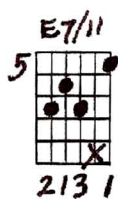
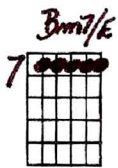
"The Shadow of Your Smile" - Ted Greene Arrangement, p.3



I _____ Now when I re - mem - ber spring, _____

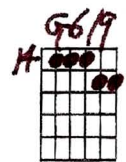
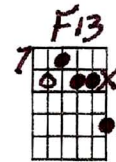
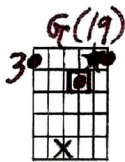


_____ all the joy that love can bring, _____



28

_____ I will be re - mem - ber - ing _____



30

_____ The Shad - ow of Your Smile. _____

6-29-77
 arr. © Jell Johnson

Chord Melody on 'SHADOW OF YOUR SMILE by Johnny Mandel

○ = OPTIONAL
 X = after
 □ = " X X = AFTER □
 X or □ = DOUBLE FUNCTION

THE SHADOW OF YOUR SMILE by Johnny Mandel

7-4-74