

RED ROSES FOR A BLUE LADY

Playing order: ● × □ △
○ = opt.

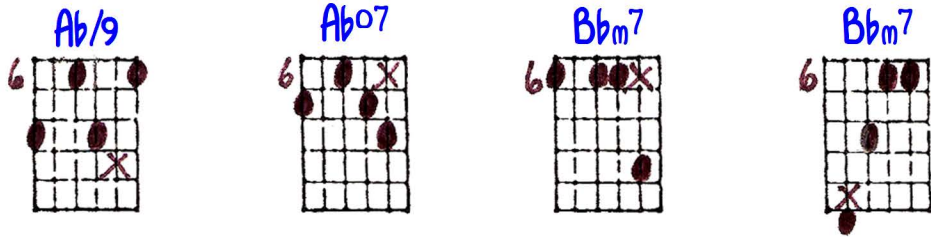
Solo Guitar

Play rubato, but not too slowly.

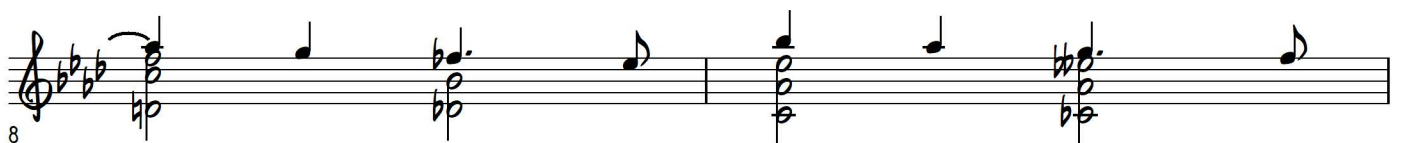
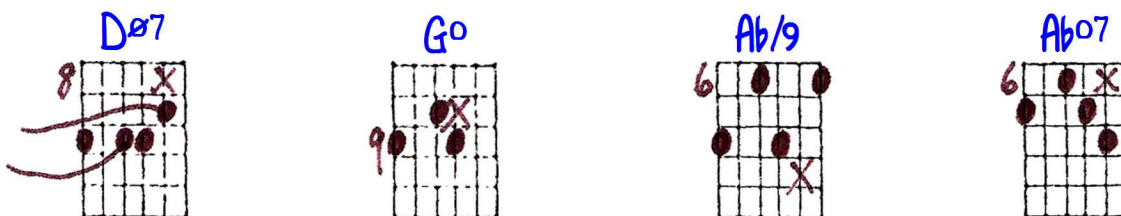
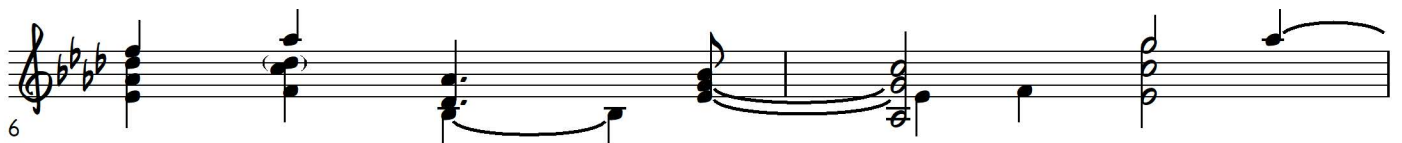
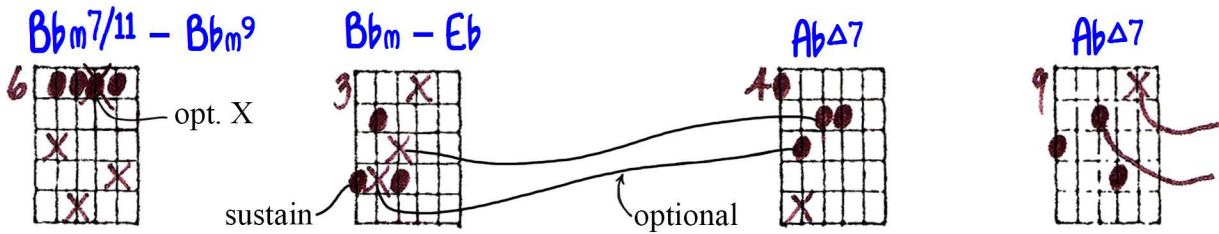
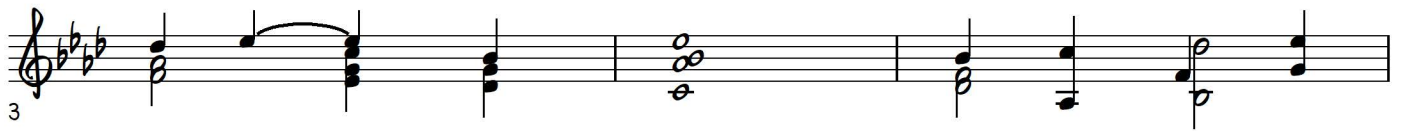
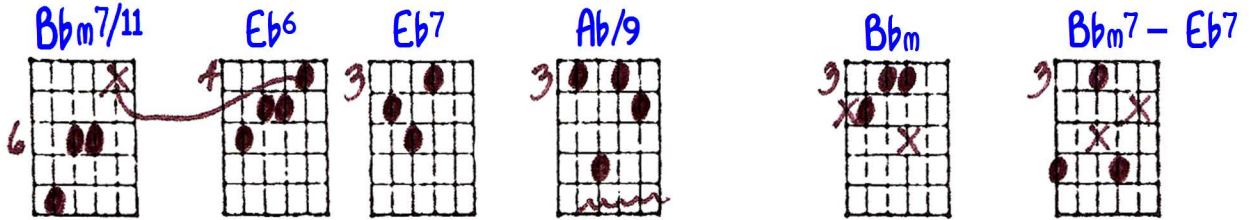
Optional Intro:

Key of Ab

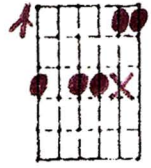
Eb note



Right-hand fills



Bb7/11



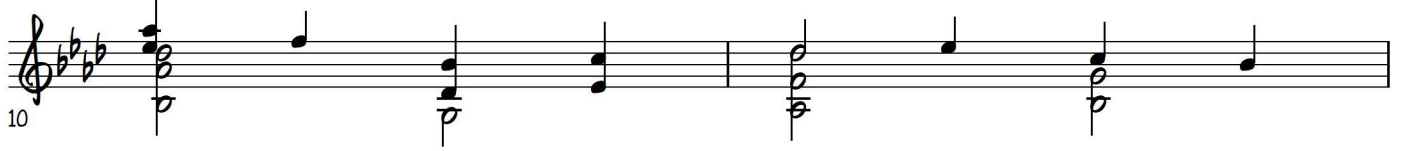
Eb7



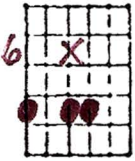
Db



Eb6



Ab/9



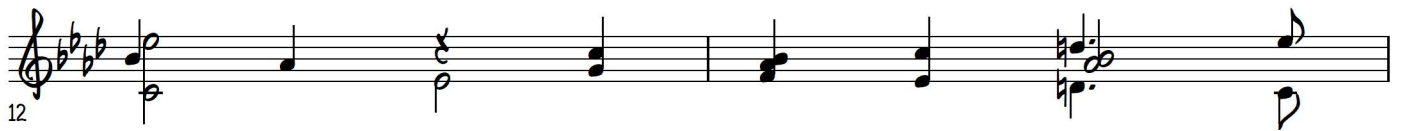
Cm



Fm



Bb7



Right-hand fills

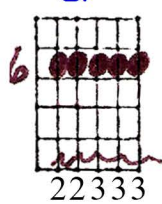
Bb7



Bb9sus



Eb11



Eb9



Bb7/11



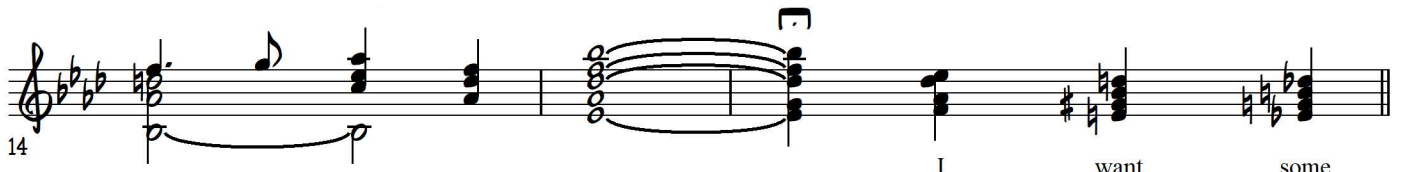
E7b5



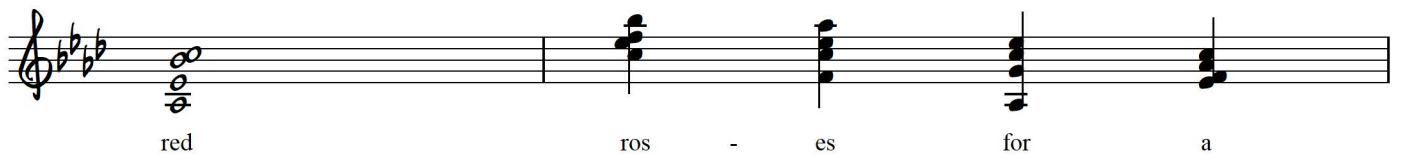
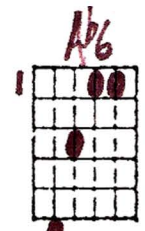
E7b9+



22333



Right-hand fills



Handwritten guitar chord diagrams for the first system:

- Chord 1: G7 (3X101)
- Chord 2: D7#9#11 (5)
- Chord 3: G7 (3)
- Chord 4: CA7+ (3)
- Chord 5: CT+

Musical notation for the first system (measures 3-5):

3 blue la - dy, mis - ter flor - ist

Handwritten guitar chord diagrams for the second system:

- Chord 1: G13b9 (3)
- Chord 2: C9 (3)
- Chord 3: F13 (1)
- Chord 4: Cm9 (1)
- Chord 5: F0 (3)
- Chord 6: F (3)

Musical notation for the second system (measures 6-8):

6 take my or - der please. We

Handwritten guitar chord diagrams for the third system:

- Chord 1: Bbm7/11 (6)
- Chord 2: Bbm7/11 (6)
- Chord 3: Eb6 (4)
- Chord 4: Eb7/6 (3)
- Chord 5: Ab/9 (3)
- Chord 6: C7 (1)

set-up for next chord 24231

Musical notation for the third system (measures 9-11):

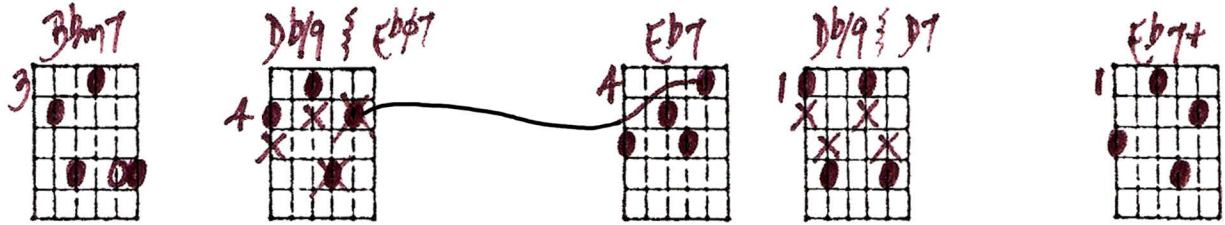
9 had a sil - ly quar - rel the oth - er

Handwritten guitar chord diagrams for the fourth system:

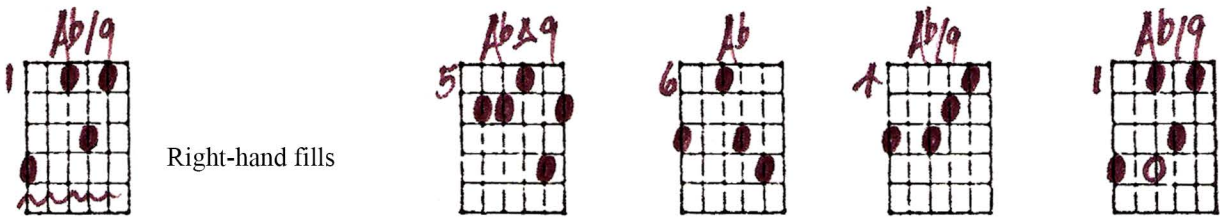
- Chord 1: Fm (1)
- Chord 2: Bb13 (3)
- Chord 3: Bb7 (3)
- Chord 4: Fm9 (6)
- Chord 5: Bb7/6 (3)

Musical notation for the fourth system (measures 12-14):

12 day, hope these pret - ty flow - ers chase her

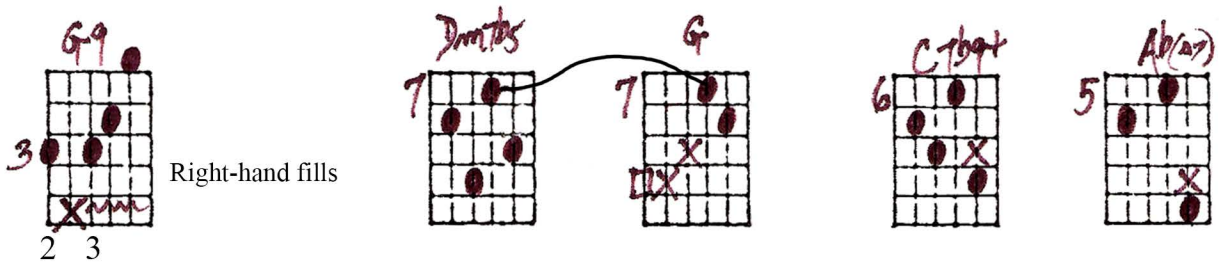


15 blues a - way. Wrap up some



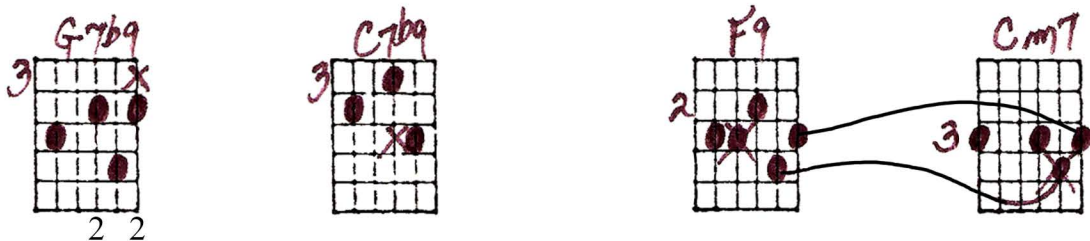
Right-hand fills

17 red ros - es for a



Right-hand fills

19 blue la - dy, send them to the



22 sweet - est gal in town,

F9 **F7(6)** **Bbm/11** **Bbm6/11**

optional or include initially too.

24

and if they do the

Gb9#11 **Ab** **Db/9** **Gb7**

thumb Why no 2nd string?

26

trick, I'll hurry back to

F9#11 **Bbm7/11** **Bbm9** **D#7**

28

pick, your best white or - chid

Eb11 **Eb6** **A9#11** **Ab/9**

30

for her wed - ding gown.

SOLO GUITAR
Key of A♭ OPTIONAL
INTRO

RED ROSES FOR A BLUE LADY

num = R+ hand fill

© 1985
G. Williams

PLAY
RUBATO
BUT
NOT TOO
SLOWLY

1ST
VERSE:

Handwritten guitar tablature for the song "Red Roses for a Blue Lady". The page contains 10 columns of music, each with 10 staves. The notation includes fret numbers, chord names, and fingerings. Key features include:

- Staff 1:** Intro with a 6-fret barre and various chord shapes.
- Staff 2:** Chords: F7(b9), Eb7(b9), Eb7(b9), Ab9, Ab6/9, Ab6, AbA7, Ab6, G7, D7#9#11.
- Staff 3:** Chords: G7, CA7+, C7+, G13b9, C9, F13, Cm9, F0, F, Bbm7/11.
- Staff 4:** Chords: Bbm7/11, Eb6, Eb7(b6), Ab9, C7, Fm, Bb13, Bb7, Fm9, Bb7/6.
- Staff 5:** Chords: Bbm7, Bb9#Eb7, Eb7, Db9#b7, Eb7+, Ab9, AbA9, Ab, Ab9, Ab9.
- Staff 6:** Chords: G9, Dm(b9), G, C7b9+, Ab(A7), G7b9, C7b9, F9, Cm7, F9.
- Staff 7:** Chords: F7(6), Bbm/11, Bbm6/11, Gb9#11, Ab, Db9, Gb7, F#11, Bbm7/11, Bbm9.
- Staff 8:** Chords: D#7, Eb11, Eb6, A9#11, Ab9.

Additional annotations include:

- "Eb note" pointing to the first staff.
- "PLAY RUBATO BUT NOT TOO SLOWLY" written vertically on the left.
- "1ST VERSE:" written vertically on the left.
- "or in 1st or initially too" near the bottom left.
- "WHY NO 2ND STRING?" near the bottom right.
- "set up for next chord" near the bottom right.