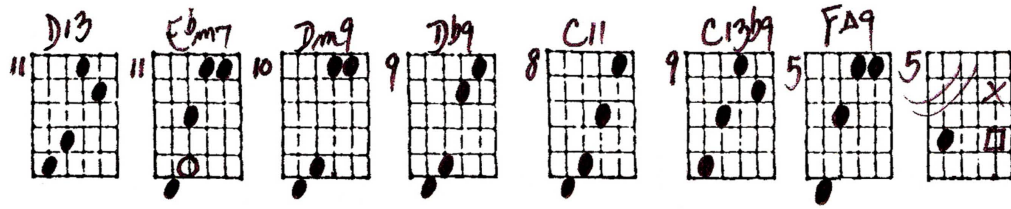


PRELUDE TO A KISS

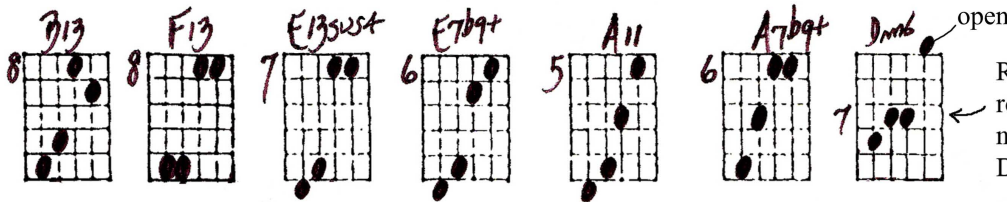
DURE ELLINGTON

Playing order: ● X □ △
○ = opt.

(Key of C)



1. If you hear a song in blue, like a



Right hand roll with B note third and D last.

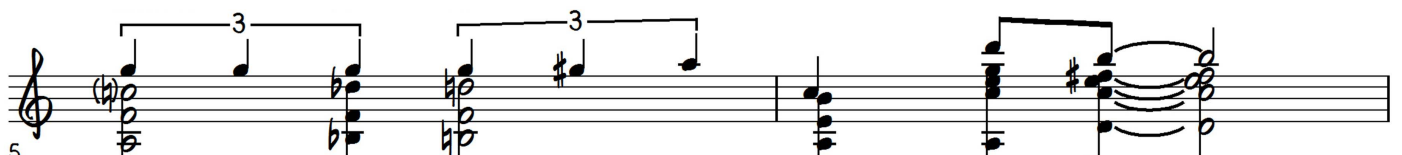
optional fill



3 flow - er cry - ing for the dew,



optional fill



5 that was my heart se - ra - na - ding you,

Use harp-harmonics trailing the melody notes.

Handwritten guitar chord diagrams for the first section:

- D7**: 5th fret, 2nd string open, 4th string open, 5th string open, 6th string open.
- D7(9)**: 5th fret, 2nd string open, 4th string open, 5th string open, 6th string open.
- G13b9**: 3rd fret, 2nd string open, 4th string open, 5th string open, 6th string open.
- C6/9**: 2nd fret, 2nd string open, 4th string open, 5th string open, 6th string open.
- A7b9b5**: 5th fret, 2nd string open, 4th string open, 5th string open, 6th string open.

Musical notation for the first section, including a treble clef, a 7-measure rest, and lyrics: "my pre - lude to a kiss." The notation includes a 4-measure rest and a 4-measure rest.

2nd verse:

Handwritten guitar chord diagrams for the second section:

- D13**: 5th fret, 2nd string open, 4th string open, 5th string open, 6th string open.
- A13**: 4th fret, 2nd string open, 4th string open, 5th string open, 6th string open.
- G13**: 3rd fret, 2nd string open, 4th string open, 5th string open, 6th string open.
- D9**: 3rd fret, 2nd string open, 4th string open, 5th string open, 6th string open.
- C13sus2**: 3rd fret, 2nd string open, 4th string open, 5th string open, 6th string open.
- F#7#9**: 2nd fret, 2nd string open, 4th string open, 5th string open, 6th string open.
- F#7/6**: 1st fret, 2nd string open, 4th string open, 5th string open, 6th string open.
- F#7**: 1st fret, 2nd string open, 4th string open, 5th string open, 6th string open.

Musical notation for the second section, including a treble clef, a 9-measure rest, and lyrics: "2. If you hear a song that grows from my 3. how my love song gent - ly cries for the". The notation includes a 3-measure rest.

Handwritten guitar chord diagrams for the third section:

- B13**: 4th fret, 2nd string open, 4th string open, 5th string open, 6th string open.
- B7b9+**: 3rd fret, 2nd string open, 4th string open, 5th string open, 6th string open.
- E13sus2**: 2nd fret, 2nd string open, 4th string open, 5th string open, 6th string open.
- E7b9+**: 1st fret, 2nd string open, 4th string open, 5th string open, 6th string open.
- A11**: 3rd fret, 2nd string open, 4th string open, 5th string open, 6th string open.
- A7b9+**: 1st fret, 2nd string open, 4th string open, 5th string open, 6th string open.
- D7b9**: 3rd fret, 2nd string open, 4th string open, 5th string open, 6th string open.

optional fill

Musical notation for the third section, including a treble clef, a 11-measure rest, and lyrics: "ten - der sen - ti - men - tal woes, ten - der - ness with - in your eyes, my". The notation includes a 3-measure rest and a 4-measure rest.

To Coda

Phrase this passage!

opt. pause

Handwritten guitar diagrams for the first phrase:

- 8: *Ahs* (open string)
- 7: *Ahs* (open string)
- 3: *Ahs* (open string)
- 3: *Dm7/11*
- 4: *C#m7/11*
- 3: *G9+*
- 1: *open*
- 10: *Am9*
- 10: *Am11*
- 10: *D7#11*

optional fill

Musical notation for the first phrase (measures 13-14):

13 that was my heart try - ing to com - pose
 love is a pre - lude that nev - er dies,

Dm stuff

Handwritten guitar diagrams for the second phrase:

- 5: *Dm stuff* (quietly)
- 6: *Bb11* (vibrato)
- 3: *G13*
- 1: *Ab*
- 2: *C*
- 3: *C#D/B*
- 2: *3/A* (opt.)

Musical notation for the second phrase (measures 15-16):

15 a pre - lude to a kiss.
 a pre - lude to a kiss.

Bridge:

Handwritten guitar diagrams for the bridge:

- 1: *EA7* (open)
- 4: *E19#11*
- 5: *EA7*
- 9: *C#m9/C#m6* (2 2 3)
- 7: *F#m7/11*
- 4: *Am6* (2 2 0 1)
- 7: *B9* (slide 1st finger)

Musical notation for the bridge (measures 17-18):

17 Though it's just a sim - ple me - lo - dy with

Prelude to a Kiss - Ted Greene Arrangement - Key of C (p.4)

Hit the bass note before the beat.

EA9 open Em6/9^7 A9 open F#m7^9 sus F#m7^9 FA7

optional fill

19 no - thing fan - cy, no - thing much,

or use Am7 to m6

open E2 B7sus^addA7 open EA7 EA7/6 open Am9 A7#9/D9 C opt.

lift on X or on 3rd string

21 you could turn it to a sym - pho - ny, a

or use A7 and add F

open 3m7/11 E E7/6 open Am7/11 A9 Dm/9/11 F#m7^9 Em7/11 open A13b9 opt.

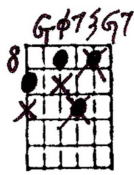
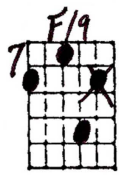
or open tie

D.S. al Coda

23 Schu - bert tune with a Gersh - win touch. 3. Oh,

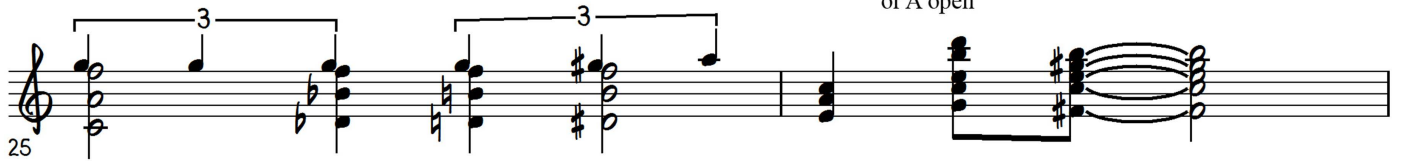
Prelude to a Kiss - Ted Greene Arrangement - Key of C (p.5)

⊕ CODA

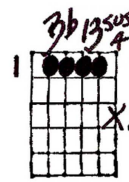
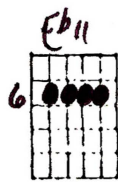
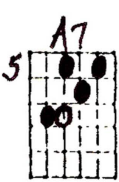


optional fill

or A open



that was my heart try - ing to com - pose_____



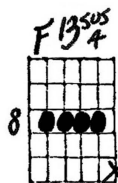
to key of B or ?

embellish and pause before

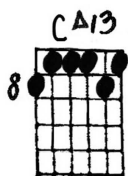
likewise



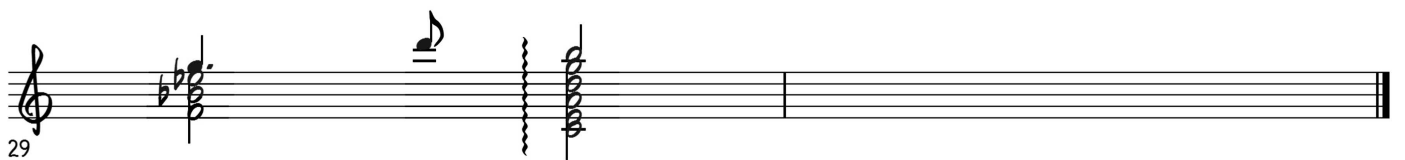
Suggested ending for key of C:



embellish and pause before



add harmonics....



Solo GUITAR

PRELUDE TO A KISS - JUNE ELLINGTON

© J. Ellington

PLAY A, B NOTES
than →

Chord diagrams and notes for 'Prelude to a Kiss':

- Row 1: D13, Em7, Dm9, Db9, C11, C13b9, FA9, B13, F13, F13
- Row 2: F13sus4, F7b9+, A11, A7b9+, Dmb, D13, D7b9, G7, Am7/11, D7b9, G7, D7b9(9), G13b9, C6/9, A7b9b5, D13, Ab13, G13
- Row 3: Db13, C13sus2, F#7#9, FA7/6, FA7, B13, G7b9, F13sus4, E7b9+, A11
- Row 4: A7b9+, Dmb, F#7#9, Dm7/11, C#m7/11, G9+, Am7/11, Am11
- Row 5: D7/6#11, Dmsharp, Bb11, G13, Ab, C, C#D/B, B/A, E7, E1/9#11
- Row 6: EA7, C#m9, F#m7/11, Amb, B9, EA9, Emb7b9, A9, F#7#9sus4, F#7#9
- Row 7: FA7, E2, B7sus4add2, EA7, EA7/6, Am9, A7#9D9, C, B, open, F#7#9sus4, F#7#9
- Row 8: FA7, Am7/11, A13b9, REPEAT, F1/9, G7b9sus4
- Row 9: G7b9+5Am, Am11, D13#11, Dm, A7, Eb11, D7#9, G13, Bb13sus4, D13sus4 to fing 9 or 7, and Am11