

LIL' DARLIN

Playing order: ● X □ △
○ = opt.

Outline Format: You have to add some repeated and other little melody tones here and there.

blue = editorial additions

1
1. You may va - ca - tion in Ha -
2. Tho' you mat - may fly to Scot - ish
3. No mat - ter where you care to

3
wa - - - ii,
High - - - lands,
tra - - - vel,

Fill

Optional:
swap the
harmonies of
measures 1-2
and 5-6

5
or go to Switz - er - land to ski,
or try some isle - near - Nap - o - li,
no mat - ter what you choose to see,

Fill

7
when you're
when you're
when -

"Lil' Darlin" - Ted Greene Arrangement, 1977-09-19, p.2



FΔ7

F7b9

Fill



scan - ning the snow cov - ered moun - tains, _____ or
whis - tlin' "The Camp - bell's are Com - ing", _____ or
ev - er your head hits that pil - low, _____ what -



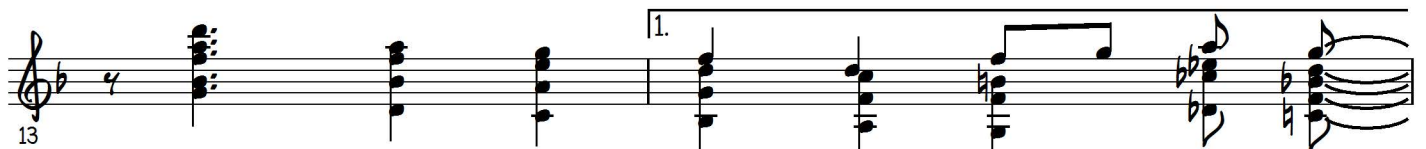
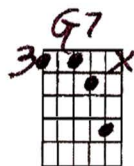
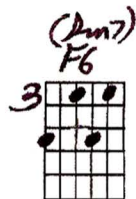
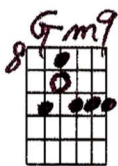
D7

Fill



fan - ning your - self by the sea, _____
hum - min "The Isle of Cap - ri", _____
ev - er the ho - ur may be, _____

07 Bb7 Am7/11 Dm7 (G13)



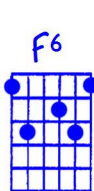
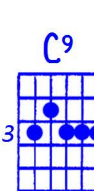
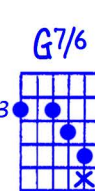
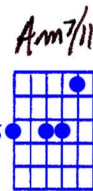
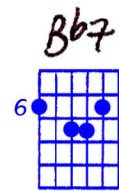
13 don't dream of an - y - bod - y but me. _____

Fill

C11

Am7

D7



A#7

D7b9



15 an - y - bod - y but me! _____ In a

Ted's arrangement does not include the bridge.

"Lil' Darlin" - Ted Greene Arrangement, 1977-09-19, p. 3

Bridge:

20 ca - fe on the Rhine, _____ an - y - place a - long the line, _____ I'll for -

24 give you when a stran-ger puts you lit - tle heart in dan-ger if his face re - sem - bles mine. _____ When you

28 vis - it a night club in Fris - co _____ and the sing - er keeps sing - in' off key,

32 won't ev - en mind if sud - den - ly he _____ re - minds you of me. _____ D.C. al Coda

36 Don't dream of an - y - bod - y but me! _____

LIL' DARLIN' by NEAL HEFTI

9-19-77
arr.
© Jed
Greene

Outline format:
You have to add some repeated & other little melody tones here & there

NOTE
↓
OR REVERSE THESE PHASES
↑

10	G11	G13	Db9+11	C11	C11b9	F7	Fill							
8														
6	Bb7	Am7	Am7	Gm7	Gm7	C11	F7	Fill						
5														
3	Bb6	Bbm7b6	F/9				Bb6	Eb9	Am7					
2														
1	Gm9	(Gm9) Bb7	Am7	Gm7	(Am7) F6	G7	Db9+	C11						
0														
10	Am7	G13	Db9+11	C11	Gm7	F#7	F/9							
8														
6														
5														
3														
2														
1														
0														

D.C. al coda

NE
by itself