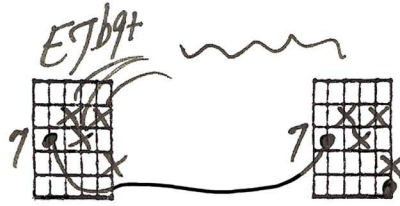


LAURA

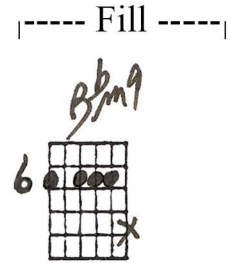
Solo Guitar (fragment - first 8 measures only)

Playing ● × □ △
order: ○ = opt.

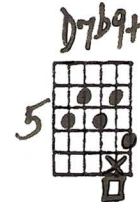
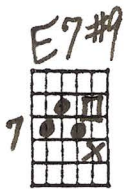
Key of A



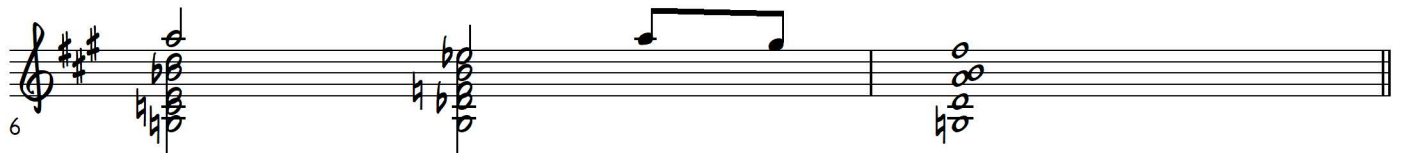
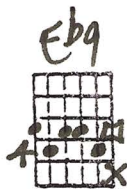
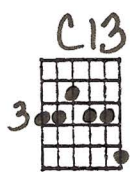
1. Lau - ra _____ is on the face in that the
2. Lau - ra _____ on the train that is



2 mis - ty in light,
pass - in through,



4 foot - steps that you hear down the
those - eyes, how fam - il - iar they



6 hall.
seem.

"Laura" - Ted Greene Arrangement, p.2

8 $Gm7$ $Gm7$ $Gm7b5$ $C7$ $F\Delta7$

1.

The laugh that floats on a summer night, that you can

12 $Bm7b5$ $E7b9b5$ $E7/D$ $C\#m7$ $F\#7b9$

nev - er quite re - call and you see

16 $Gm7$ $Gm7$ $A7b9$ D $E13$

2.

She gave you ver - y first kiss to you that was

20 $E13b9$ $E7+b9$ $A13sus$ $A13$ $A7+b9$ $D9$ $F\#7b9$

Lau - ra, but she's on - ly a dream.

LAURA

Ted Greene
Lead Sheet
1973-09-03

Move all melodies up
one octave for guitar

Am⁹ D7+b⁹ GΔ⁹

1. Lau - ra _____ is the face in the mis - ty light, _____
2. Lau - ra _____ on the train that is pass - in through, _____

Gm⁹ C7+b⁹ FΔ⁹

4 foot - steps _____ that you hear down the hall. _____
those eyes, _____ how fam - il - iar they seem. _____

Fm⁷ Fm⁷ Fm⁷b⁵ Bb⁷ EbΔ⁷

1.

8 The laugh _____ that floats on a sum - mer night, _____ that you can

Am⁷b⁵ D7b⁹b⁵ D7/C Bm⁷ E7b⁹

12 nev - er quite _____ re - call. _____ and you see

Fm⁷ Fm⁷ G7b⁹ C D13

2.

16 She gave _____ you ver - y first kiss to you, _____ that was

D13b⁹ D7+b⁹ G13sus G13 G7+b⁹ C% E7b⁹

20 Lau - ra, _____ but she's on - ly a dream. _____

Key of A

Laura Solo Guitar

K5 = 5th fret key

Chord diagrams for Laura Solo Guitar in Key of A:

- Row 1: Bm9, E7b9+, A7/9, A6b9, Bbm9, Am9, E7#9, Am9
- Row 2: D7b9+, C13, Eb9, G9

MOVE ALL MELODIES UP 1 OCTAVE FOR GUITAR

LAURA

9-3-73

Musical notation for Laura in Key of A (one octave up):