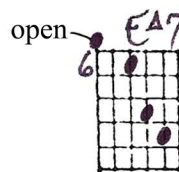
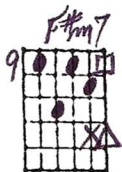
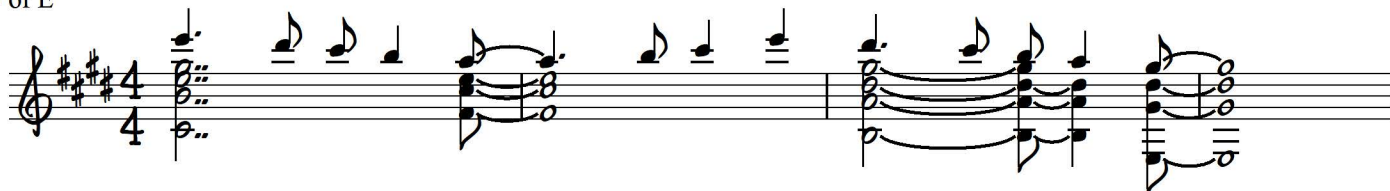


FLY ME TO THE MOON

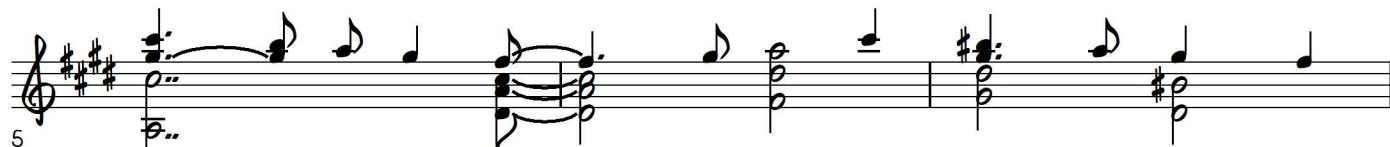
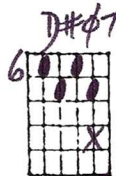
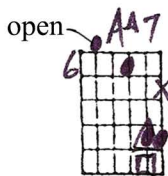
Playing order: ● × □ △
○ = opt.



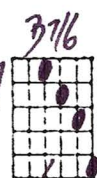
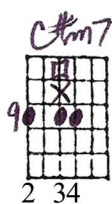
Key of E



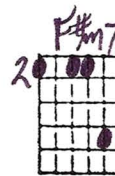
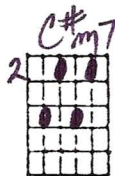
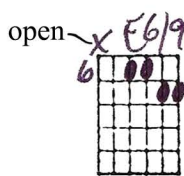
Fly me to the moon, — and let me play a - mong the stars; —



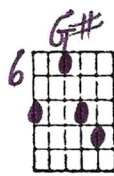
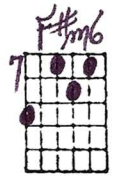
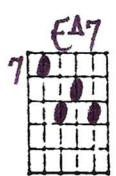
let me see what spring — is like on Ju - pi - ter and



Mars. In oth - er words, — hold my



hand! — In oth - er words, —



dar - ling kiss me! —

17

Fill my heart with song, and let me sing for - ev - er - more;

21

you are all I long for all I wor - ship and a -

24

dore. In oth - er words, please be

arpeggiate

27

true! In oth - er words

or on top 4 strings instead

optional

delayed melody

30

I love you!

----- optional turnaround -----

FLY ME TO THE MOON - GARY HOWARD

9-8-84
© Gary Howard

PLAYING ORDER: ○ X □ △

Key of E

Chord diagrams and playing instructions for 'Fly Me to the Moon' in E major:

- Row 1: C#m7 (9), F#m7 (9), B7/6 (7), OPEN EΔ7 (6), OPEN AA7 (6), D#φ7 (6), D#φ7 (8), G# (11), G# (10), C#m7 (9).
- Row 2: C#7 (6), F#m (4), F#m7 (9), B7 (7), B7sus (9), B7/6 (7), OPEN F6/9 (6), G#m7 (4), C#m7 (2), F#13b9 (2).
- Row 3: F#m7 (2), F#m7 (9), B7 (7), B13 (7), Am/6 (9), EΔ7 (7), F#m6 (7), G# (6), D.C. AL CODA (7).
- Row 4: G#φ7 (11), Bm7 (7), C# (6), C#7 (8), DELAYED MELODY F#m7 (7), C9 (5), B11 (5), B11b9 (5), E6 (6).

Additional notes: "ARPEGGIATE LATE" under B7 and F#m6; "or on TOP 4 STRINGS instead" with a circled '4' under G#φ7; "or on TOP 4 STRINGS instead" with a circled '4' under Bm7.