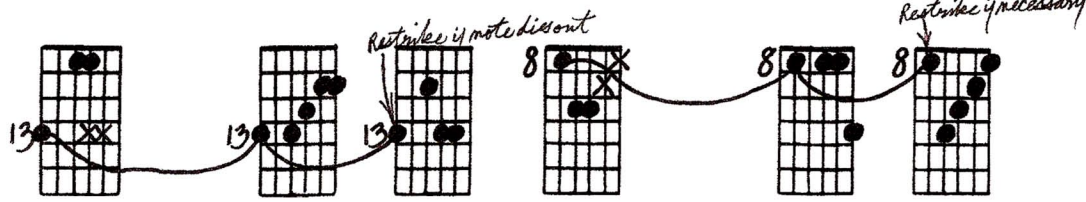


Aeolian Colors with Pedal Tones

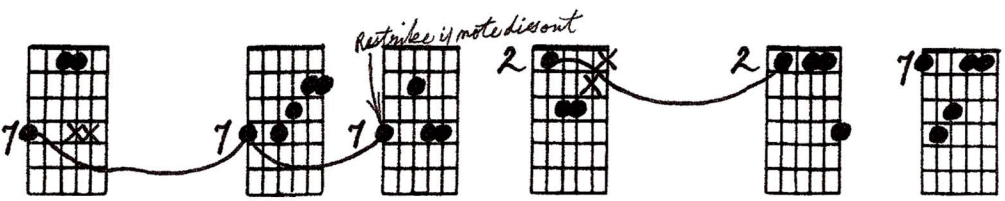
© 9.3.89
Ted Greene

Key of Fm

①

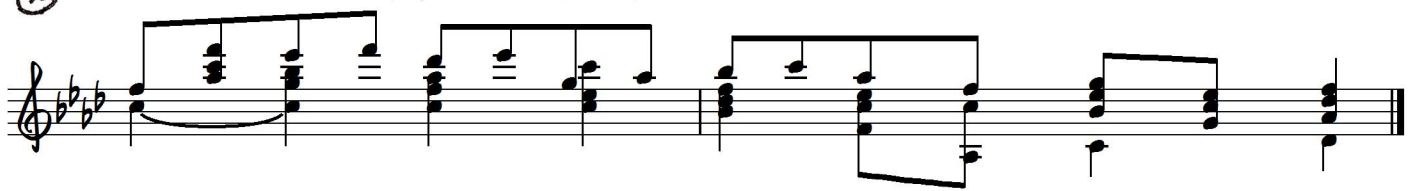
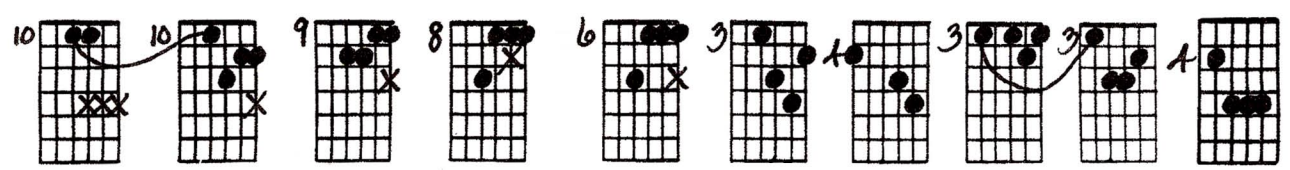


in Em



Fm

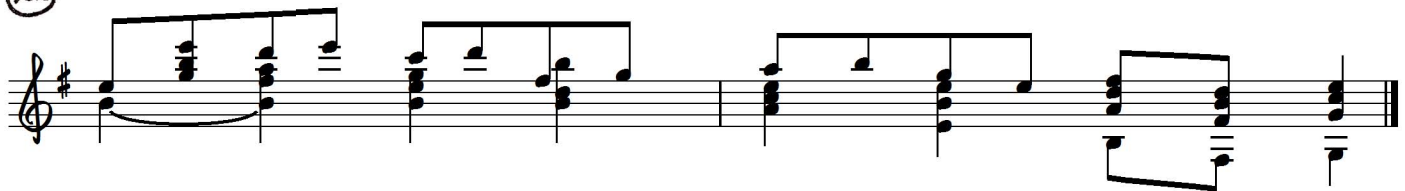
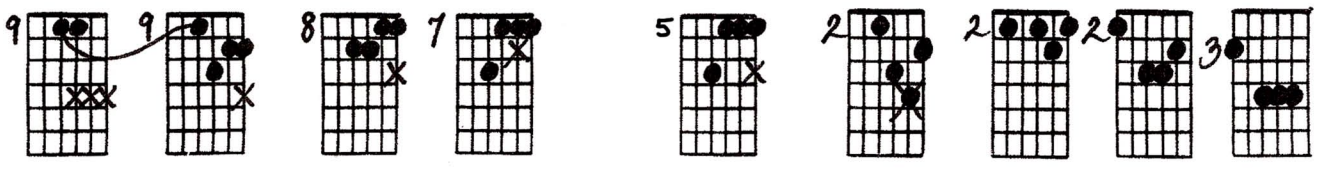
②



Now repeat this [ex. 2 above], one half-step lower (in the key of Em) up through the 5th diagram. Then play: →

Em

②a



Write me some impressions of all this (any thoughts, feelings, etc.).

