

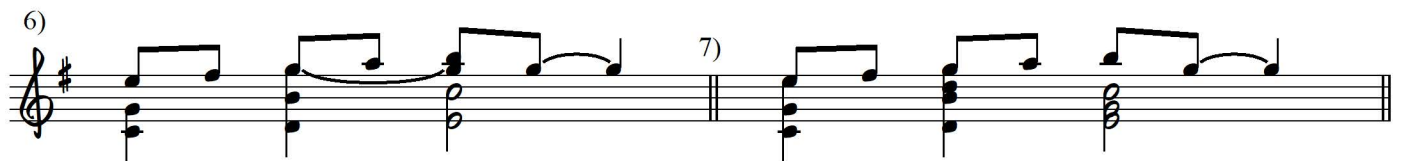
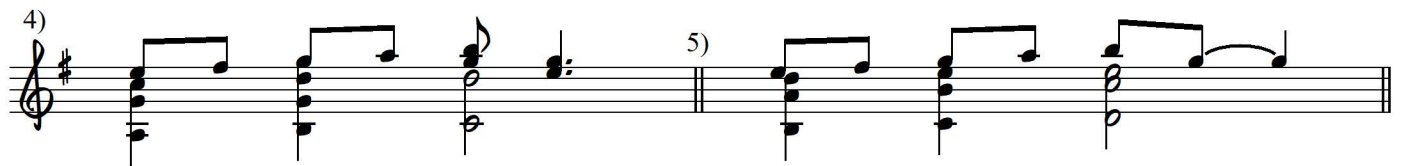
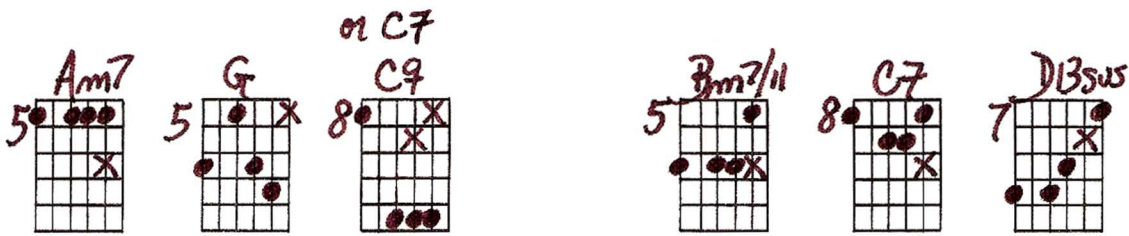
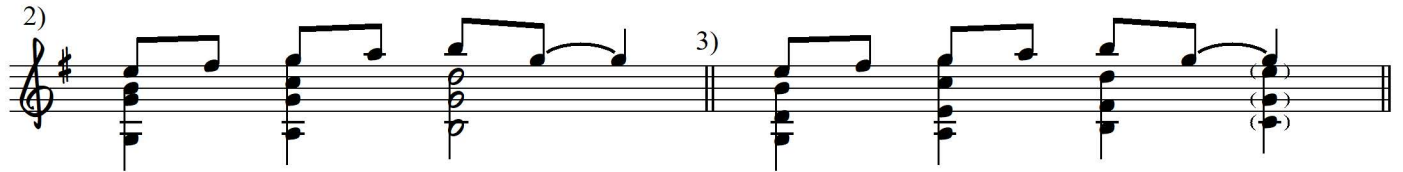
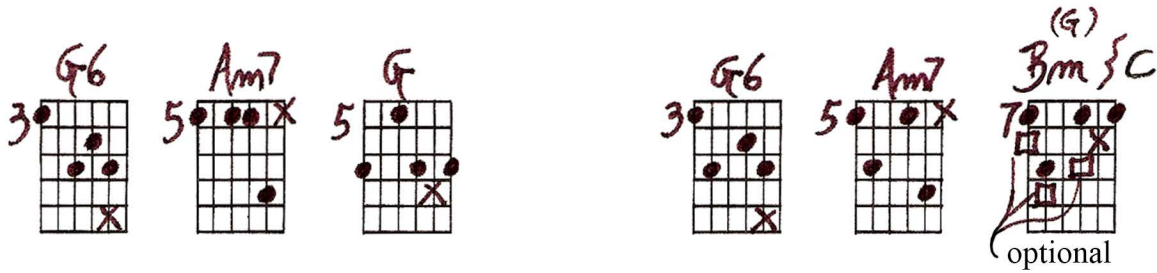
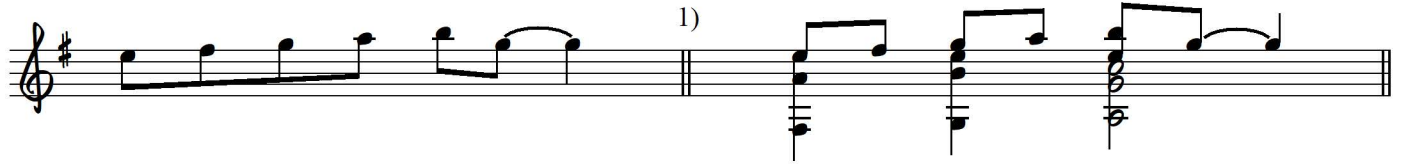
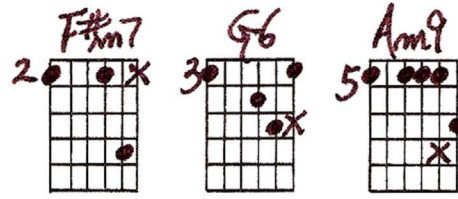
The Technique of Diatonic Harmonization as derived from bass lines

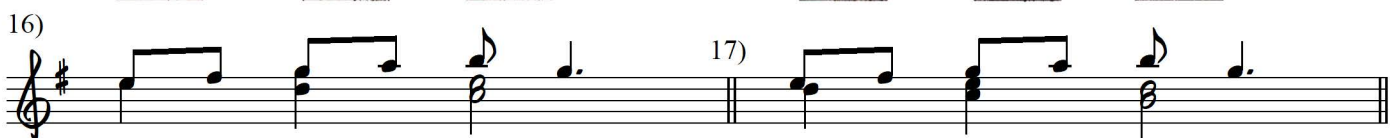
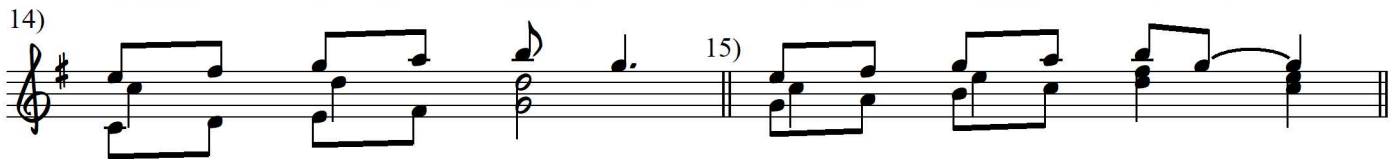
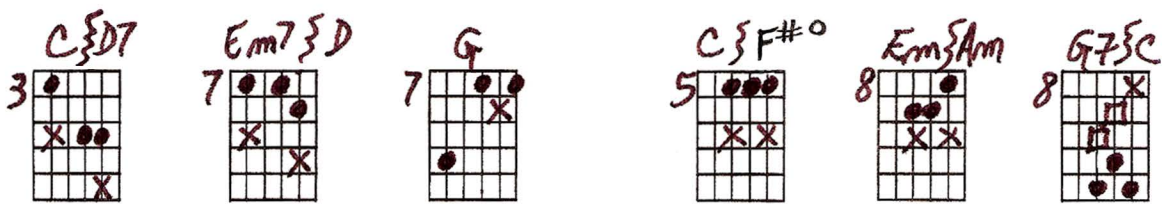
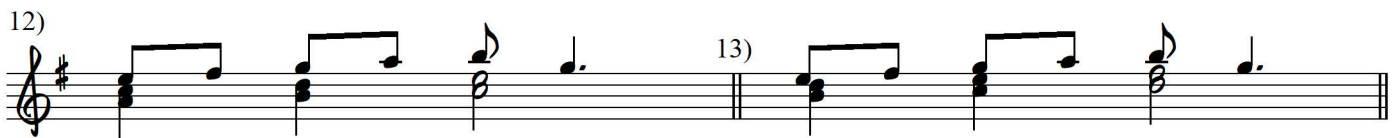
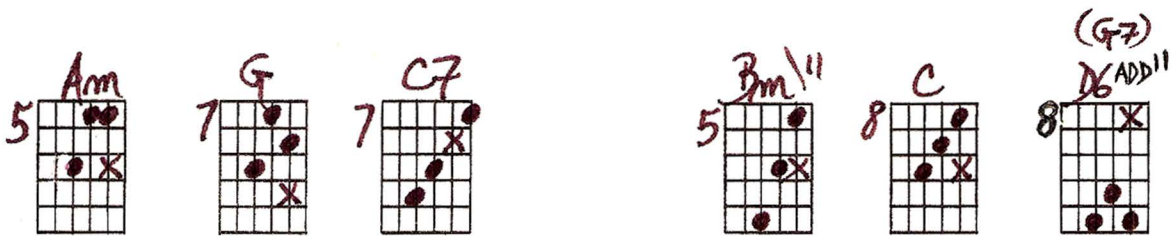
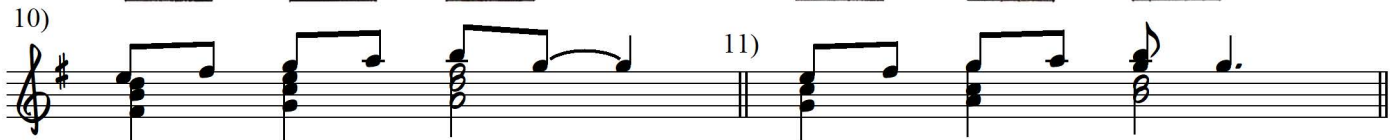
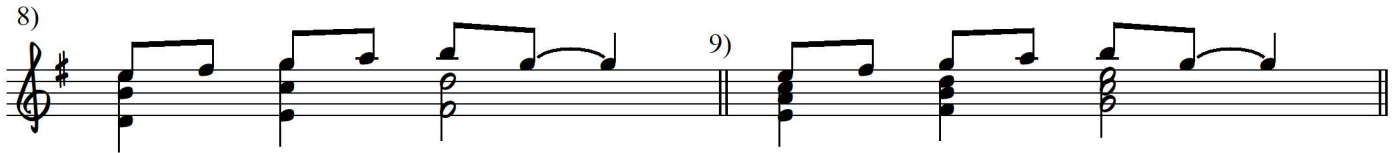
Ted Greene
1977-07-18

(Part 2)

Playing order: ● × □ △
○ = opt.

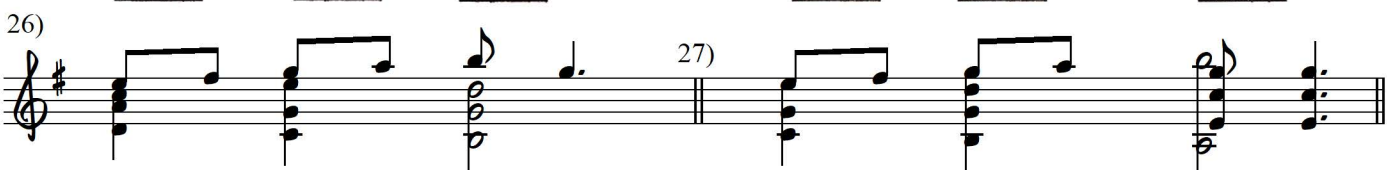
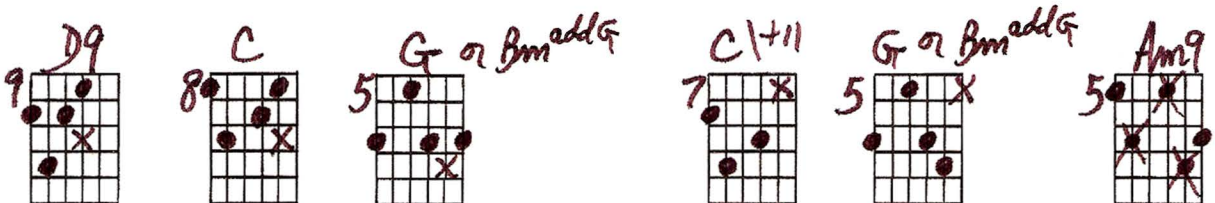
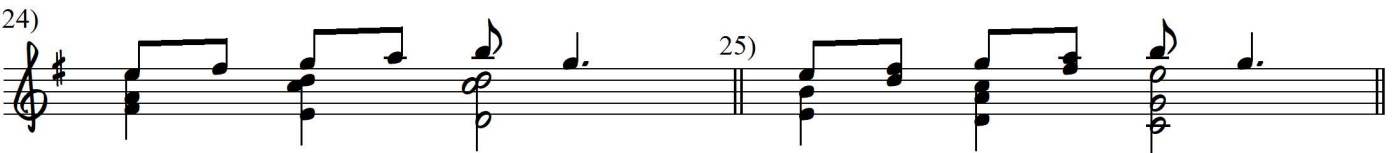
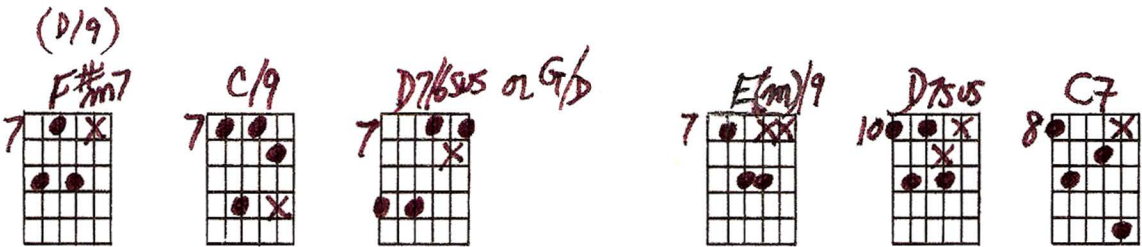
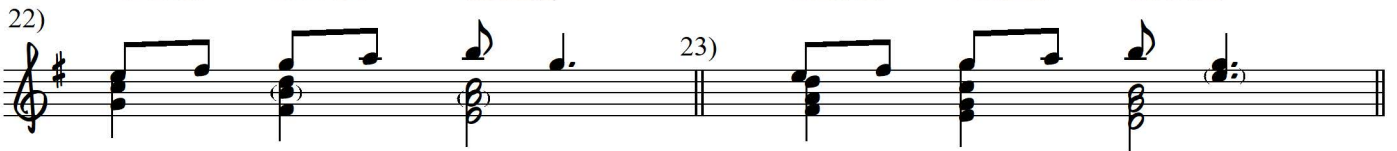
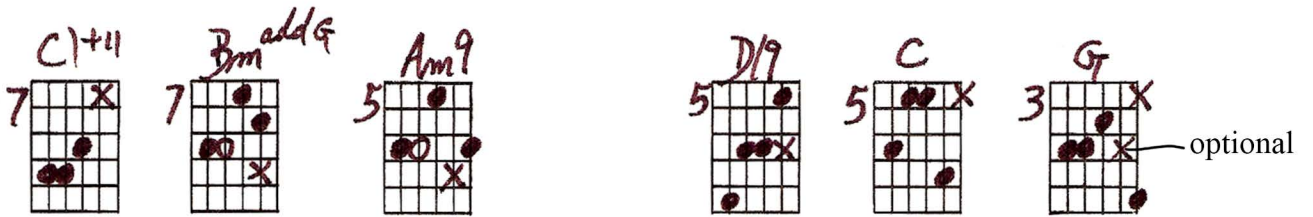
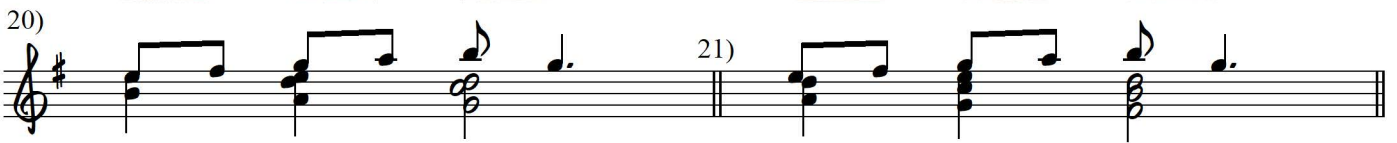
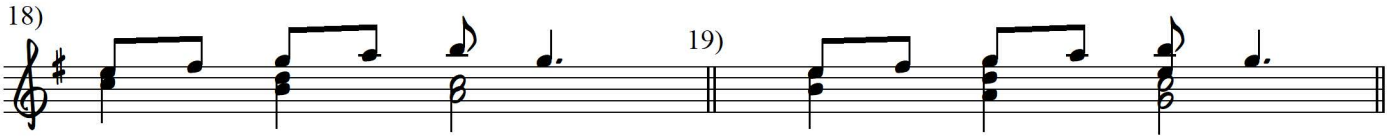
Key of G

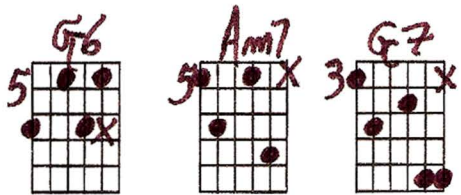






or C^Δ9 as in next example





Bass pedal and lines.....



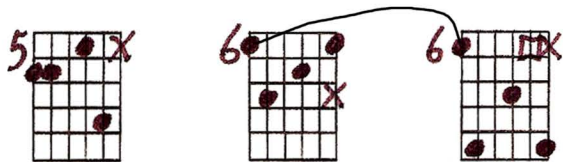
28) 29) Musical notation for measures 28 and 29. Measure 28 is in G major, and measure 29 is in A minor. The notation shows a treble clef, a key signature of one sharp (F#), and a 2/4 time signature. The melody consists of quarter notes, and the bass line consists of half notes.

Bass pedal and lines.....

Key of Bb



30) 31) Musical notation for measures 30 and 31. Measure 30 is in Bb major, and measure 31 is in Bb major. The notation shows a treble clef, a key signature of two flats (Bb, Eb), and a 2/4 time signature. The melody consists of quarter notes, and the bass line consists of half notes.



32) Musical notation for measure 32. The notation shows a treble clef, a key signature of two flats (Bb, Eb), and a 2/4 time signature. The melody consists of quarter notes, and the bass line consists of half notes.

