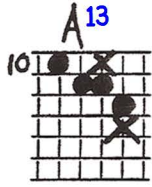
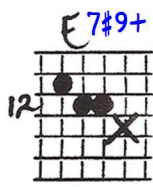


Short Intros Using Modest Decoration

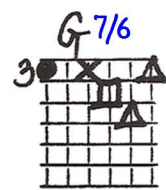
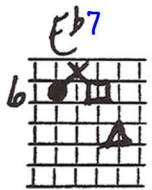
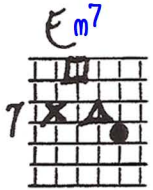
Ted Greene
1990-01-16

Playing order: ● × □ △
○ = opt.

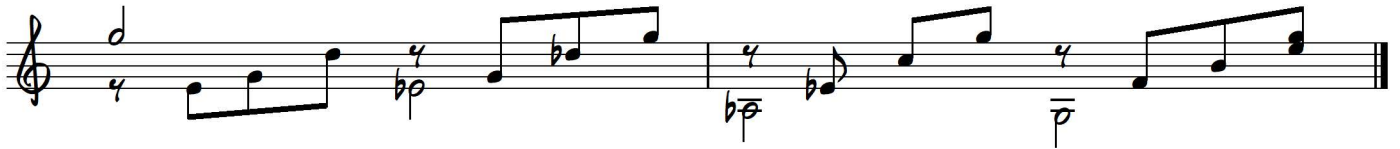
Key of C
1)



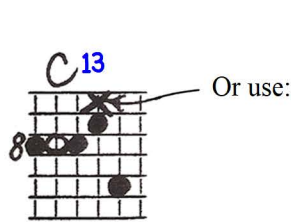
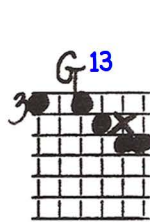
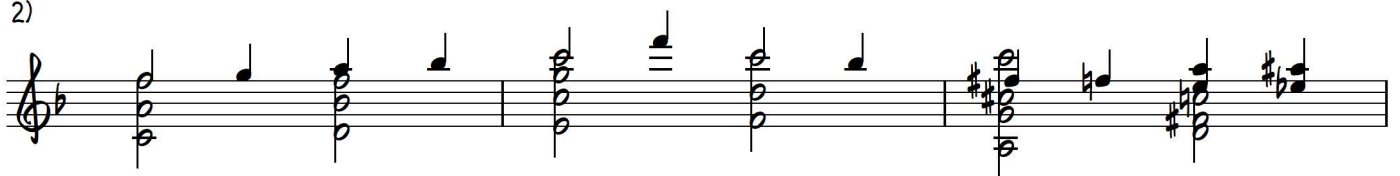
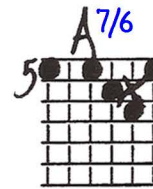
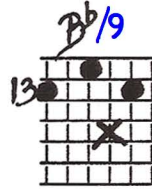
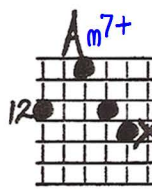
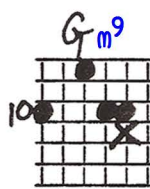
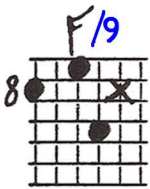
Switching right hand texture here.



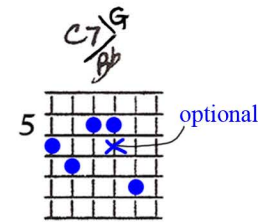
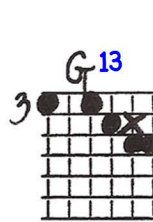
Please transpose this example to the key of E too.



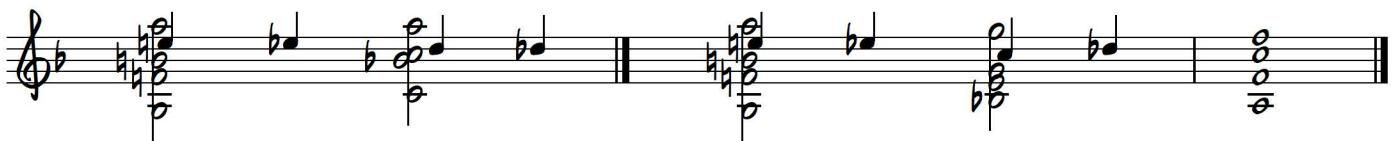
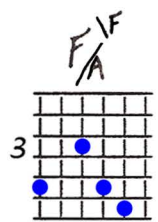
Key of F
2)



Or use:



optional

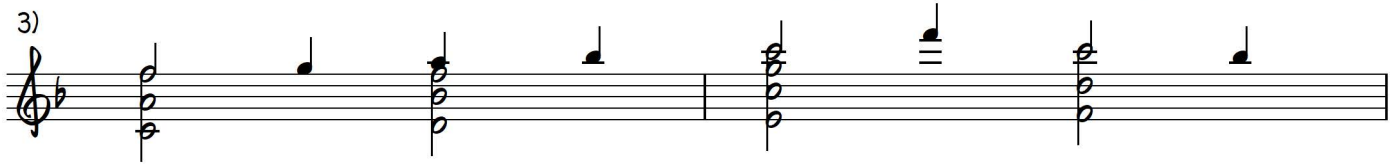


Variation:

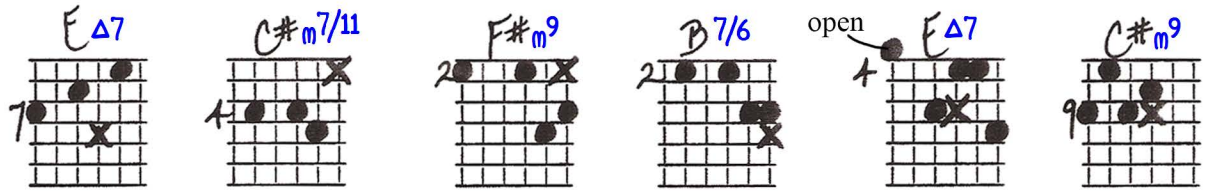


Still key of F

3)

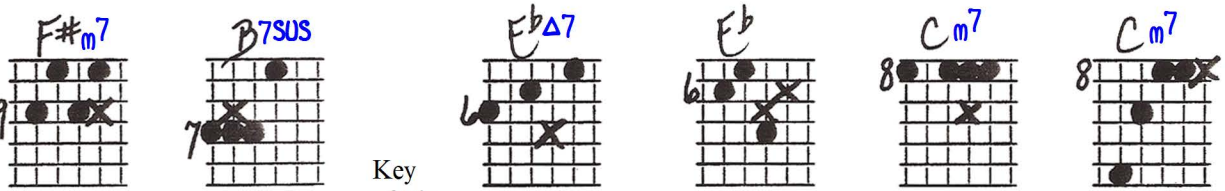
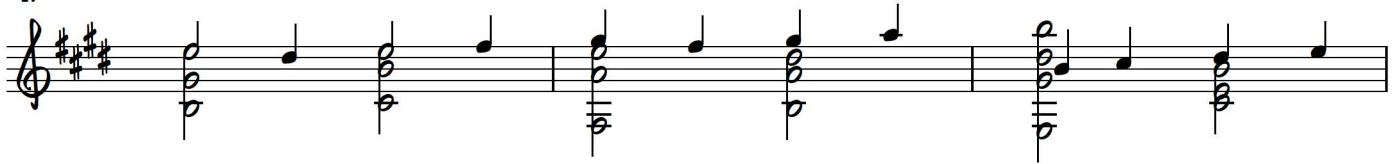


Tougher
(stay with it)



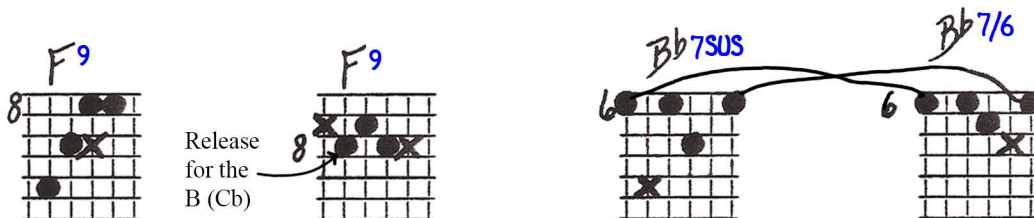
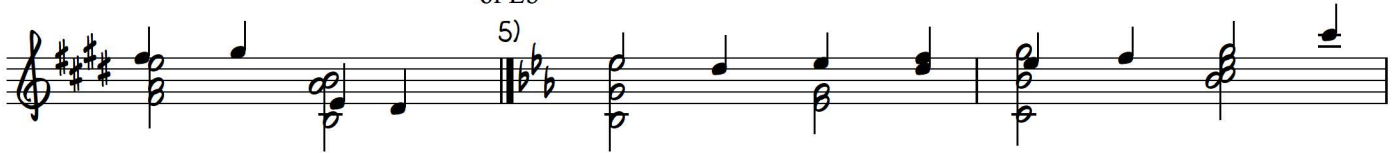
Key of E

4)



Key of Eb

5)



Release
for the
B (Cb)



SHORT INTROS USING MODEST DECORATION

© 1-16-90
Jed Greene

① Key of C

E A D G E Eb Ab G

SWITCHING R.H. HAND TEXTURE HERE

please transcribe the example to the key of E too.

② Key of F

F G A Bb A D G C

or use C7/G to F/A here

③ still Key of F

VARIATION:

F G A Bb G Db C C

to F/3

④ Key of E
Tougher
(STAY WITH IT)

E C# F# B OPEN E C# F# B

⑤ Key of Eb

Eb Eb C C F F Bb Bb

REVERSE for the B