

Playing order: ● × □ △  
○ = opt.

# Samplers

Ted Greene  
1979-09-25

B $\Delta^9$  no3   E $\Delta^9$    A11   D $\Delta^9$    G $\Delta^9$    F#11   B $\Delta$ 13

1)

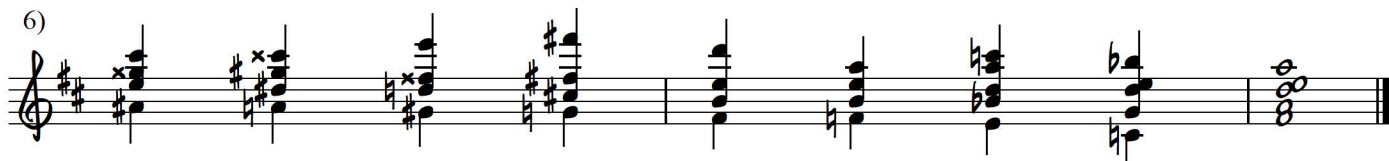
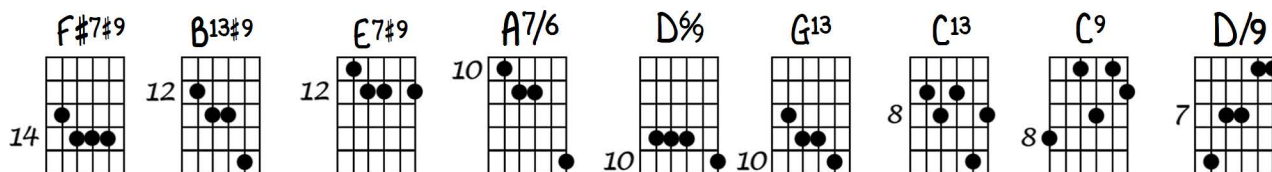
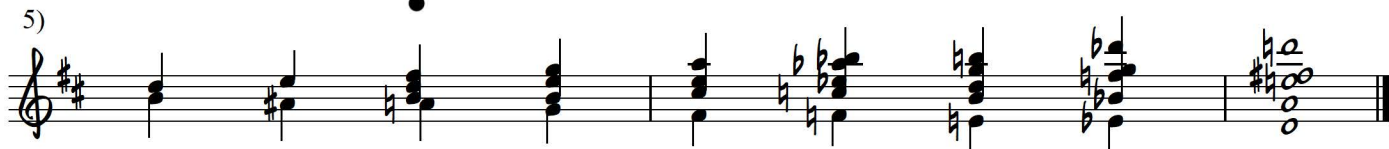
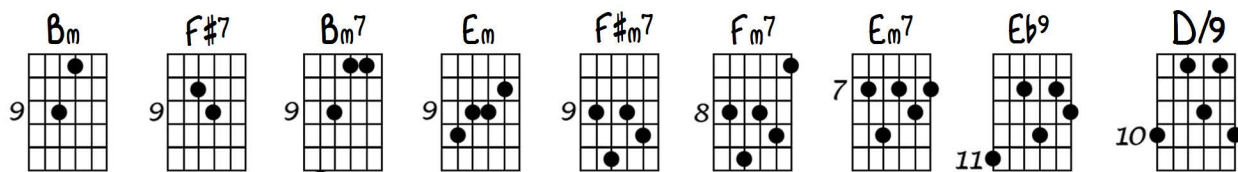
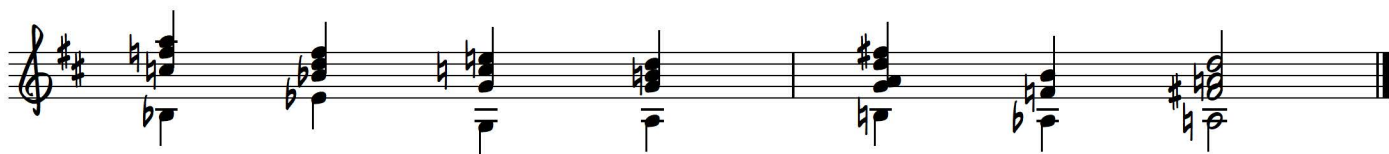
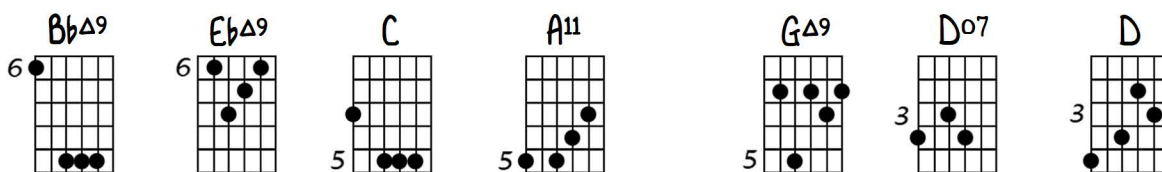
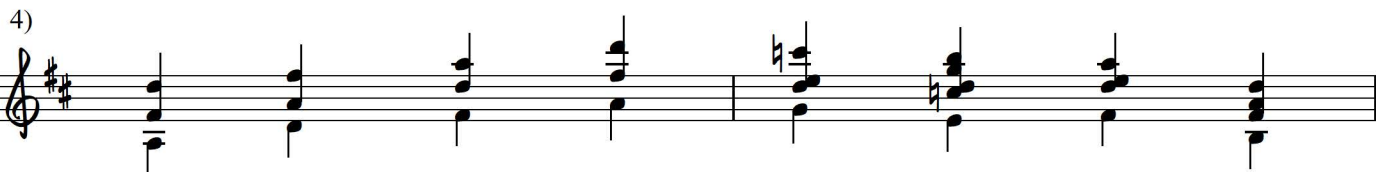
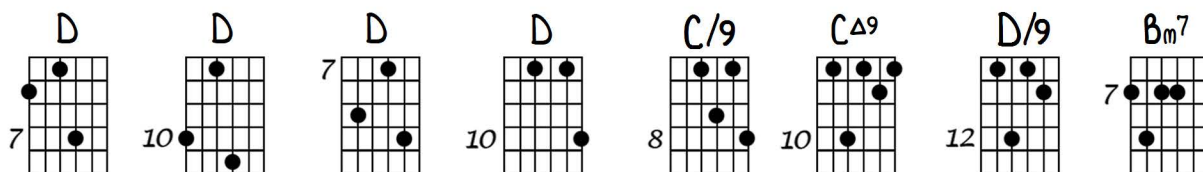
B/9   B7/6   open E $\Delta^9$    A $\Delta^9$    G#m7   G $\Delta^9$    F#11

2)

Bm   Gm6   D   E   A7   A7   D   G $\Delta^7$

3)

G   B7b9   Em   B   Em   E7   open A11



C<sub>m</sub>7 F7<sup>b</sup>9 B<sub>b</sub>m7 E<sub>b</sub>13<sup>b</sup>9 A<sub>b</sub>/9 A<sub>b</sub>7 B<sub>b</sub>7 D<sub>b</sub>m<sup>Δ</sup>7

7)

A<sub>b</sub> A<sub>b</sub>7 B<sub>b</sub> E<sub>b</sub>7<sup>b</sup>9 A<sub>b</sub> E<sup>9</sup> B<sub>b</sub>m7/11 A7<sup>b</sup>5

Variation:

E<sub>b</sub>7 E<sub>b</sub>0<sup>7</sup> D<sub>b</sub>Δ7 D<sub>b</sub>0/9 A<sub>b</sub>/9 A<sub>b</sub>7 B<sub>b</sub>7 D<sub>b</sub>m<sup>Δ</sup>9

8)

A<sub>b</sub>Δ7 D<sub>m</sub>7<sup>b</sup>5 D<sub>b</sub>m7<sup>b</sup>5 A<sub>b</sub>/9 E<sup>9</sup> E7 D<sub>b</sub>/9 E<sub>b</sub>7 A<sup>9</sup> A<sub>b</sub>/9

ritard....

# Samplers

9.25.79

$\Delta = \text{MAJOR}$

Bb/9 1R  
 D9 15  
 G A7  
 C9  
 Bm

Close Bb9+ / A11NE Gm7/11 A7/6 1R A13b9/13 Bb11/13  
 MELLONIC MOTION (CONTRAPUNTAL) 1 1 1 C9 15 CA9 13 D/9 15 Bm7 13 Bb9 17 Eb  
 C/9 A11 13 D/9 15 15 3

Handwritten musical score with guitar chord diagrams and notation. The score is organized into four systems, each with a guitar chord diagram above a staff of music. The chords and notation are as follows:

- System 1:** Cm7, F7b9, Bbm7, Eb13b9, Ab/9, Ab7, Bb7, Dbm7, Ab, Ab7, Bb, Eb7b9.
- System 2:** Ab, E9, Bbm7/11, A7#11, Eb(-), Eb7, Db(A7), Dbb/9, Ab/9, Ab7. Includes the word "VARIATION:".
- System 3:** Bb(-), Dbm7, Ab(A7), Dm7b5, Dm7b5, Ab/9, E9, E7, Db/9, Eb7, A9, Ab/9.
- System 4:** Continuation of the notation from System 3, ending with a double bar line.



Handwritten notes and chord diagrams:

- SLOW POP or CHORALISH FEEL
- (SLOW)
- Ab: Fm7, Ab(A7), Dm7
- FIXATED to SET or STAYEN
- Ab, Cm7, Bbm7, Eb(6?), sus etc, Ab7
- etc