

Playing order: ● × □ △
○ = opt.

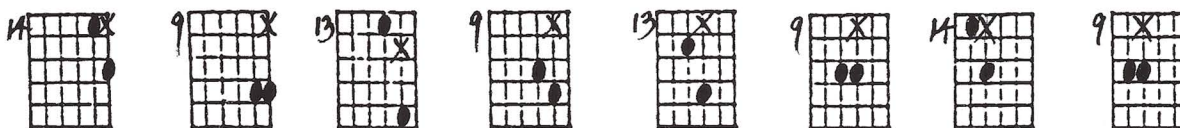
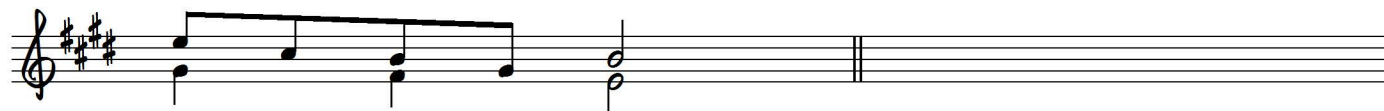
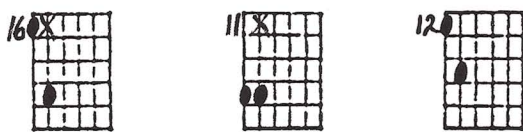
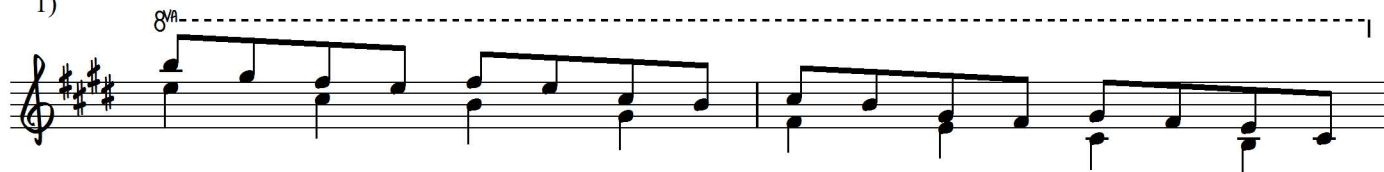
Major Pentatonic:

2 Voices, 2-to-1 Soprano Line in Two Non-Adjacent Positions
for Full-Range Tone and Vision

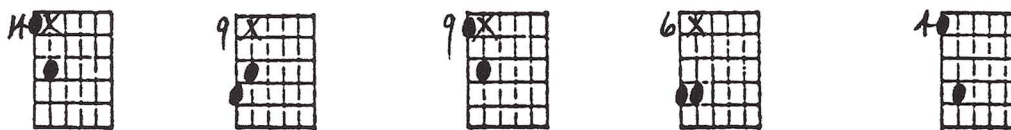
PART 4

Key of E

1)

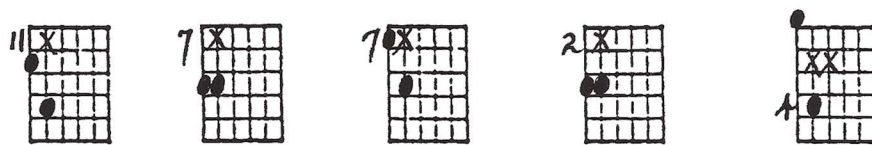


2)

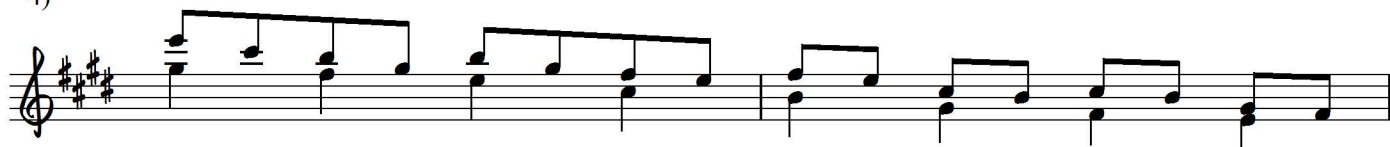


3)

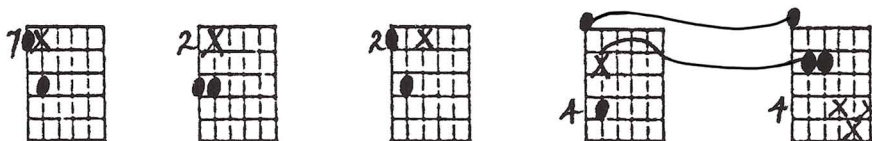




4)



5)



MAJOR PENTATONIC:

2 VOICES, 2 to 1 SOPRANO LINE in 2 NON-ADJACENT POSITIONS for FULL-RANGE TONE & VISION

1-24-85
Jed Johnson

Key of E

