

Diatonic Harmonization of a 3-Note Theme: Frozen Notes Underneath

Ted Greene
1985-05-26

Playing order: ● × □ △
○ = opt.

(No inner voice movement; first note sustained if you can)

[Chord names in blue are just one suggestion; other interpretations are also possible.]

Part 1

1)

2)

3)

4)

5)

6)

7)

8)

9)

10)

11)

12)

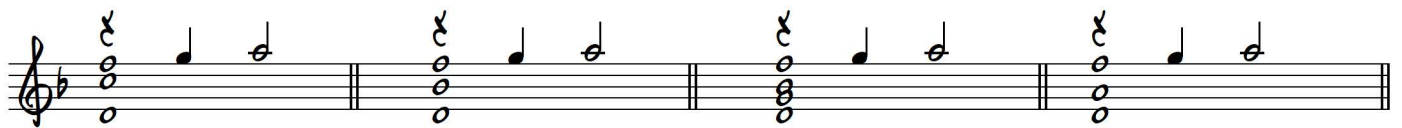
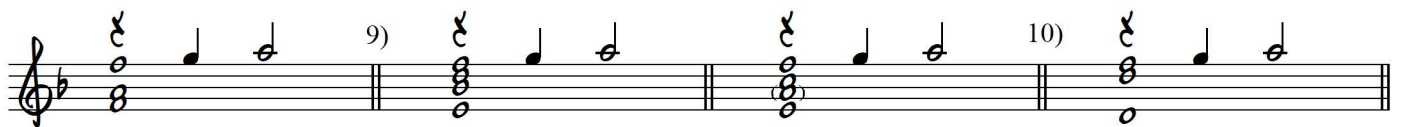
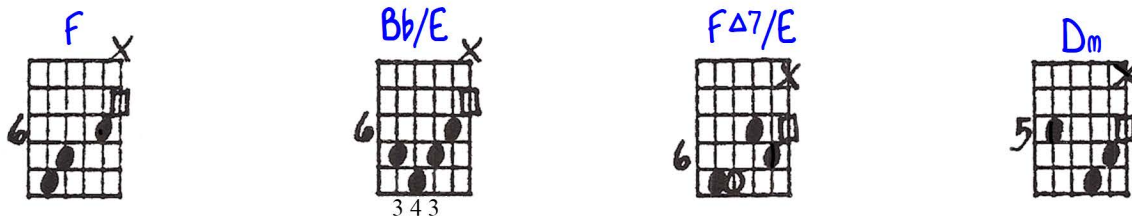
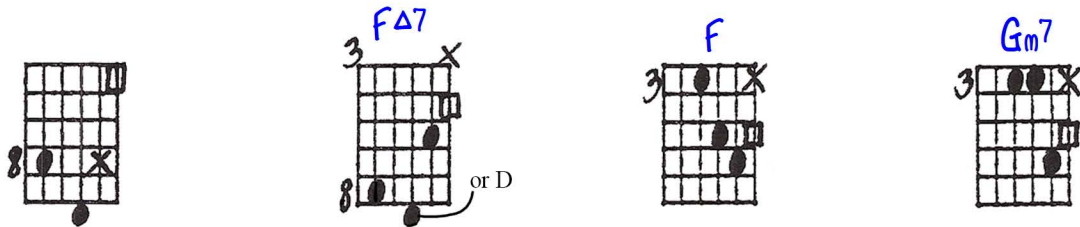
13)

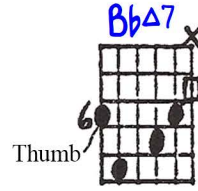
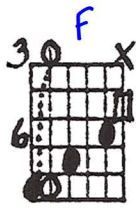
14)

15)

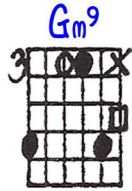
16)

17)

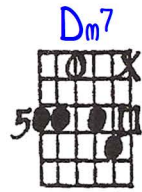




Musical notation for the first row, including a treble clef, a key signature of one flat, and a sequence of notes: C, E, G, A, B, C. The notation includes bar lines and a measure number '12)'.



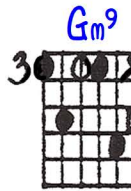
Musical notation for the second row, including a treble clef, a key signature of one flat, and a sequence of notes: C, E, G, A, B, C. The notation includes bar lines and a measure number '13)'.



Musical notation for the third row, including a treble clef, a key signature of one flat, and a sequence of notes: C, E, G, A, B, C. The notation includes bar lines and a measure number '14)'.

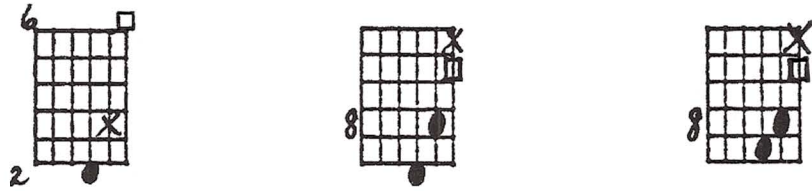


Musical notation for the fourth row, including a treble clef, a key signature of one flat, and a sequence of notes: C, E, G, A, B, C.



Musical notation for the fifth row, including a treble clef, a key signature of one flat, and a sequence of notes: C, E, G, A, B, C.

Part 2



1)



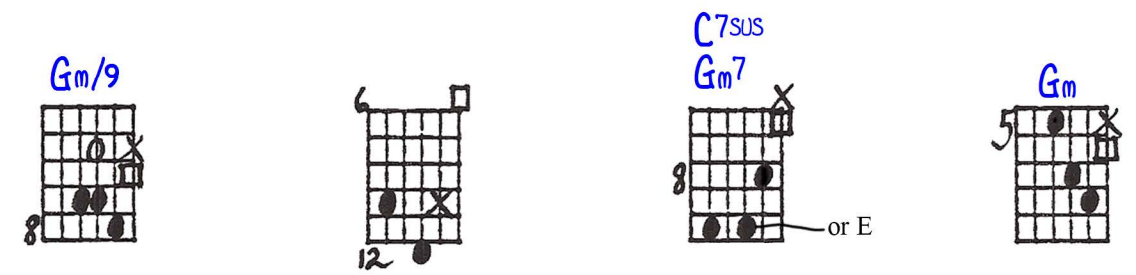
4)



6)



7)



8)

C7no3 Gm7 Gm7 Gm7

9)

Detailed description: This block shows the first exercise. It consists of four guitar chord diagrams in blue ink: C7no3 (5th fret, 2nd string open, 3rd string 5, 4th string 4, 5th string 3, 6th string 2), Gm7 (5th fret, 2nd string open, 3rd string 5, 4th string 4, 5th string 3, 6th string 2), Gm7 (5th fret, 2nd string open, 3rd string 5, 4th string 4, 5th string 3, 6th string 2), and Gm7 (5th fret, 2nd string open, 3rd string 5, 4th string 4, 5th string 3, 6th string 2). Below the diagrams is a musical staff in treble clef with a key signature of one flat. It contains four measures of a 3-note theme: C4, E4, G4. The first measure is marked with a '9)' and a double bar line. The notes are quarter notes.

Gm7 C7 C9 Em7b5

10)

Detailed description: This block shows the second exercise. It consists of four guitar chord diagrams in blue ink: Gm7 (5th fret, 2nd string open, 3rd string 5, 4th string 4, 5th string 3, 6th string 2), C7 (7th fret, 2nd string open, 3rd string 5, 4th string 4, 5th string 3, 6th string 2), C9 (7th fret, 2nd string open, 3rd string 5, 4th string 4, 5th string 3, 6th string 2), and Em7b5 (7th fret, 2nd string open, 3rd string 5, 4th string 4, 5th string 3, 6th string 2). Below the diagrams is a musical staff in treble clef with a key signature of one flat. It contains four measures of a 3-note theme: C4, E4, G4. The first measure is marked with a '10)' and a double bar line. The notes are quarter notes.

Em7/11b5 C7 or just Bb C7/6 Am7 Gm7

11)

Detailed description: This block shows the third exercise. It consists of five guitar chord diagrams in blue ink: Em7/11b5 (7th fret, 2nd string open, 3rd string 5, 4th string 4, 5th string 3, 6th string 2), C7 (5th fret, 2nd string open, 3rd string 5, 4th string 4, 5th string 3, 6th string 2) with a note 'or just Bb' pointing to the 5th fret, C7/6 (5th fret, 2nd string open, 3rd string 5, 4th string 4, 5th string 3, 6th string 2), Am7 (5th fret, 2nd string open, 3rd string 5, 4th string 4, 5th string 3, 6th string 2), and Gm7 (8th fret, 2nd string open, 3rd string 5, 4th string 4, 5th string 3, 6th string 2). Below the diagrams is a musical staff in treble clef with a key signature of one flat. It contains four measures of a 3-note theme: C4, E4, G4. The first measure is marked with a '11)' and a double bar line. The notes are quarter notes.

C9/D Em7b5/D Gm Dsus D7sus

Detailed description: This block shows the fourth exercise. It consists of five guitar chord diagrams in blue ink: C9/D (8th fret, 2nd string open, 3rd string 5, 4th string 4, 5th string 3, 6th string 2), Em7b5/D (8th fret, 2nd string open, 3rd string 5, 4th string 4, 5th string 3, 6th string 2), Gm (5th fret, 2nd string open, 3rd string 5, 4th string 4, 5th string 3, 6th string 2), Dsus (5th fret, 2nd string open, 3rd string 5, 4th string 4, 5th string 3, 6th string 2), and D7sus (5th fret, 2nd string open, 3rd string 5, 4th string 4, 5th string 3, 6th string 2). Below the diagrams is a musical staff in treble clef with a key signature of one flat. It contains four measures of a 3-note theme: C4, E4, G4. The notes are quarter notes.

Gm Gm Gm C7sus

12)

Detailed description: This block shows the fifth exercise. It consists of four guitar chord diagrams in blue ink: Gm (5th fret, 2nd string open, 3rd string 5, 4th string 4, 5th string 3, 6th string 2), Gm (8th fret, 2nd string open, 3rd string 5, 4th string 4, 5th string 3, 6th string 2), Gm (5th fret, 2nd string open, 3rd string 5, 4th string 4, 5th string 3, 6th string 2), and C7sus (8th fret, 2nd string open, 3rd string 5, 4th string 4, 5th string 3, 6th string 2). Below the diagrams is a musical staff in treble clef with a key signature of one flat. It contains four measures of a 3-note theme: C4, E4, G4. The first measure is marked with a '12)' and a double bar line. The notes are quarter notes.

C7 C9m03 Gm/C C9 C7

C7 C9m03 Gm/C C9 C7

C7sus C7sus C7sus Bb6

C7sus C7sus C7sus Bb6

Gm/9 BbΔ7/6 C9/Bb C7m03/Bb Bb6/9

Gm/9 BbΔ7/6 C9/Bb C7m03/Bb Bb6/9

C7sus/Bb A7sus A7sus Dsus

C7sus/Bb A7sus A7sus Dsus

Am7 F/9 Am7 Am7 Am7

Am7 F/9 Am7 Am7 Am7

DIATONIC HARMONIZATION of a 3 NOTE THEME : Frozen Notes Underneath, (No Chorus, Voice Movement) (First Note Sustained) if you can

© 5-26-85
Jed Johnson

The diagram consists of 14 rows of guitar chord diagrams, numbered 1 through 14. Each diagram shows a 6-string guitar fretboard with notes indicated by dots and strings that are muted by 'X'. The diagrams are arranged in a grid, with some numbers appearing multiple times in a row. The diagrams illustrate various diatonic harmonizations for a 3-note theme, showing how the notes of the theme are sustained while other notes in the chord move.

Row 1: Diagrams 1, 2, 3, 4, 5, 6, 7, 8, 9, 10, 11, 12, 13, 14

Row 2: Diagrams 1, 2, 3, 4, 5, 6, 7, 8, 9, 10, 11, 12, 13, 14

Row 3: Diagrams 1, 2, 3, 4, 5, 6, 7, 8, 9, 10, 11, 12, 13, 14

Row 4: Diagrams 1, 2, 3, 4, 5, 6, 7, 8, 9, 10, 11, 12, 13, 14

Row 5: Diagrams 1, 2, 3, 4, 5, 6, 7, 8, 9, 10, 11, 12, 13, 14

Row 6: Diagrams 1, 2, 3, 4, 5, 6, 7, 8, 9, 10, 11, 12, 13, 14

Row 7: Diagrams 1, 2, 3, 4, 5, 6, 7, 8, 9, 10, 11, 12, 13, 14

Row 8: Diagrams 1, 2, 3, 4, 5, 6, 7, 8, 9, 10, 11, 12, 13, 14

Row 9: Diagrams 1, 2, 3, 4, 5, 6, 7, 8, 9, 10, 11, 12, 13, 14

Row 10: Diagrams 1, 2, 3, 4, 5, 6, 7, 8, 9, 10, 11, 12, 13, 14

Row 11: Diagrams 1, 2, 3, 4, 5, 6, 7, 8, 9, 10, 11, 12, 13, 14

Row 12: Diagrams 1, 2, 3, 4, 5, 6, 7, 8, 9, 10, 11, 12, 13, 14

Row 13: Diagrams 1, 2, 3, 4, 5, 6, 7, 8, 9, 10, 11, 12, 13, 14

Row 14: Diagrams 1, 2, 3, 4, 5, 6, 7, 8, 9, 10, 11, 12, 13, 14