

BLUES PROGRESSION SKELETONS

© 8-25-85
Ted Greene

Ted Greene - 1985-08-25

Use rhythmic anticipations where necessary throughout this page. (Also try rhythmic delays.)

Key of C

8 C7(b9) 7 F9 8 C7(b9) 8 C7+

4/4

7 F9 7 F9 8 C7(b9) 7 F9

5

6 E7(b9)+ 5 A7(b9) 4 D7(b9)+ 4 Ab7(b9)

8

3 Dm9 3 G7(b9)+ 2 C9 5 A7(b9)+ 4 D9 9 G13(b9)

10

Blues Progression Skeletons -- Ted Greene (p.2)

8 C7b6 F9 C7b6 C7+ C7#9+

1

F9 F9 F9 C7b6 F9 * E7#9 A7#9+

5 8

D9 Ab9 G7b9 G7#9+ C9 Eb13 AbA9 G13

If you use this, then use

RELEASE CHORD IF YOU MUST

9

* Optional treatment of bar 8 on:

E7#9 A7#9+ D9 Ab13

8

G7sus+ G7+ Em7 Eb13 AbA9 G7#9+

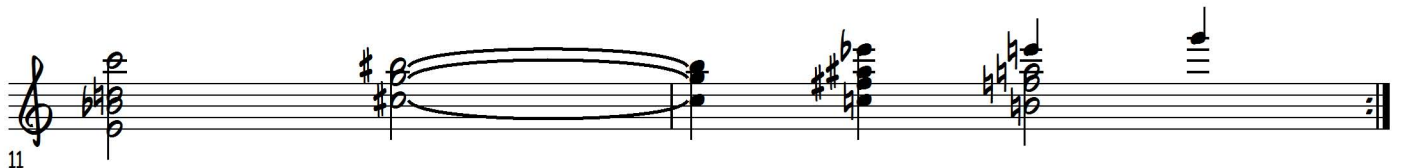
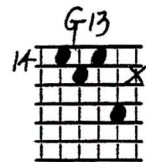
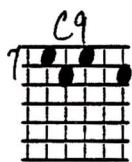
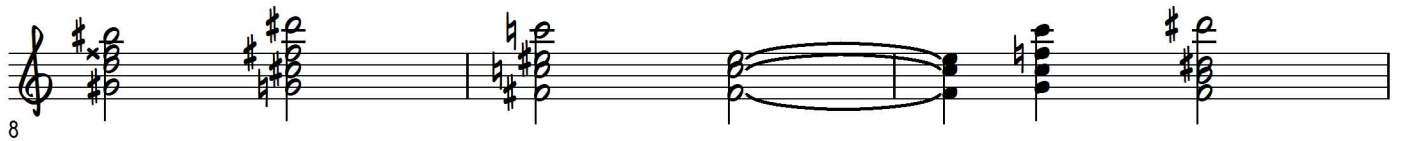
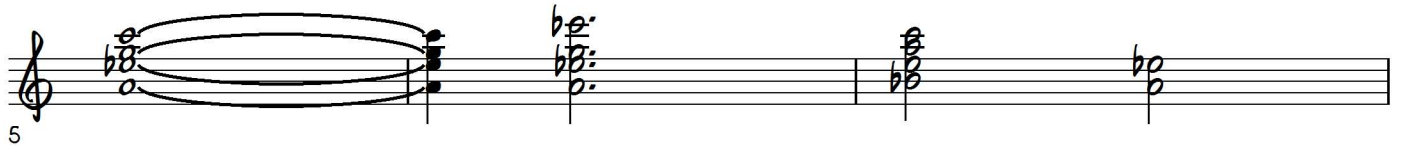
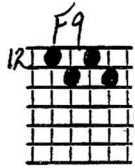
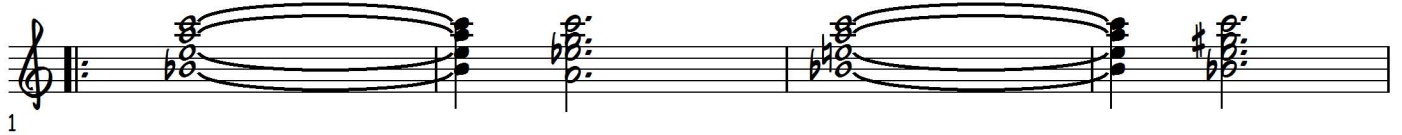
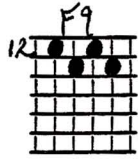
10

Blues Progression Skeletons -- Ted Greene (p.3)

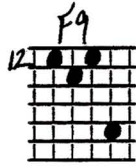
(2nd set of strings)

Use rhythmic anticipations where necessary on this page to bring things alive. Also try rhythmic delays.

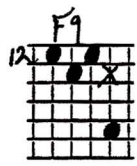
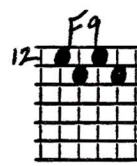
Key of C



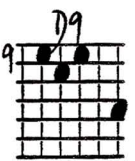
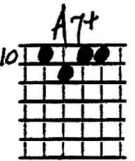
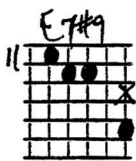
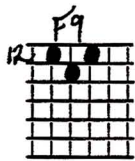
Blues Progression Skeletons -- Ted Greene (p.4)



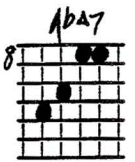
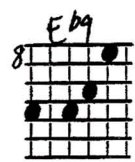
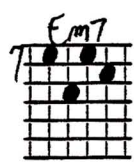
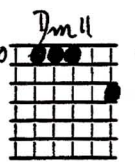
1



4



7



10

BLUES PROGRESSION SKELETONS

© 8-25-88
Jed Williams

Key of C

USE RHYTHMIC ANTICIPATIONS WHERE NECESSARY THROUGHOUT THIS PAGE. (ALSO TRY RHYTHMIC DELAYS.)

8	C7/6		7	F9	8	C7/6		8	C7+	7	F9				
7	F9	8	C7/6	7	F9	6	E7#9+	5	A7/6	4	D7#9+	4	Ab7/6	3	Dm9
3	G7#9+	2	C9	5	A7#9+	4	D9	9	G13b9	BACK TO THE TOP					
8	C7/6	7	F9	8	C7/6			8	C7+	8	C7#9+	7	F9		
7	F9	7	F9	8	C7/6	7	F9	6	E7#9	5	A7#9+	7	D9	1	Ab9
3	G11b9	3	G7#9+	2	C9	5	Eb13	10	AbA9	9	G13	BACK TO THE TOP OF THIS PAGE.			
3	G7sust	3	G7+	2	Em7	5	Eb13	10	AbA9	11	G7#9+				

IF YOU USE THIS THEN USE!

TRY THIS OPTIONAL TREATMENT OF BAR 8 ON TOP

RELEASE CHORD IF YOU MUST

