

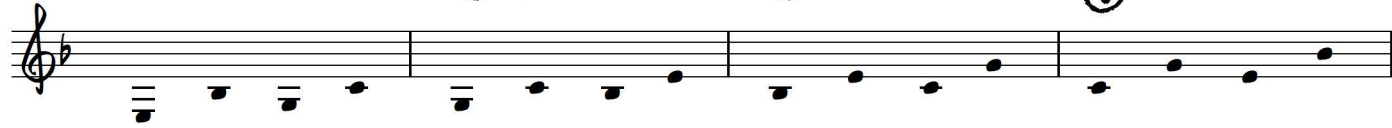
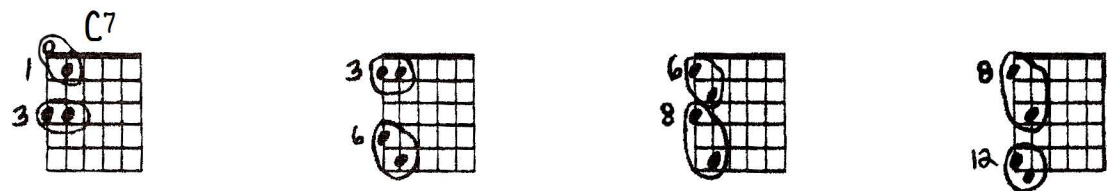
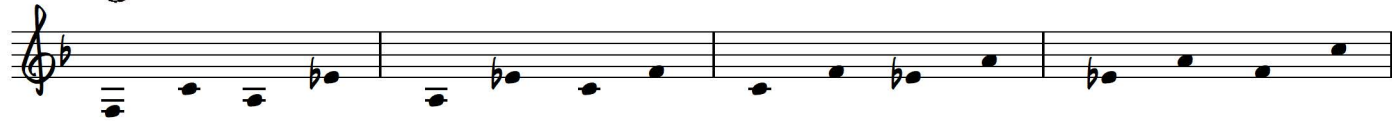
Also try as diads

BLUES BASS - WALKING

Ted Greene
1996 Spring

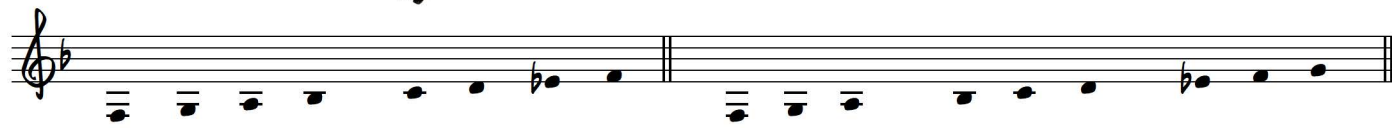
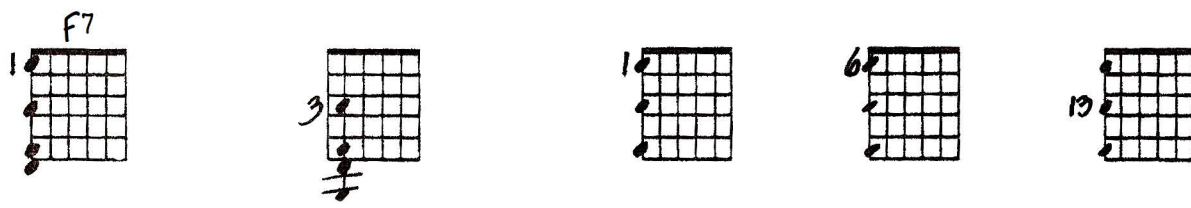
Fretboard visual elements

Key of F



For "Directional Scale-wise Lines" try:

- 1) Long lines by crossing the string
- 2) or Shifting on the same string:
- or Both



3) or "7 Pockets of 6 notes":



"Blues Bass - Walking" - Ted Greene, p.2

F7

8 10 11

Bb7

3 6 8 13

2 11 2 34 24 3 2 13

Bb7

11 8 6 1

2 13 or 3 24 2 14 or 3 24 23 4 1 24

F7

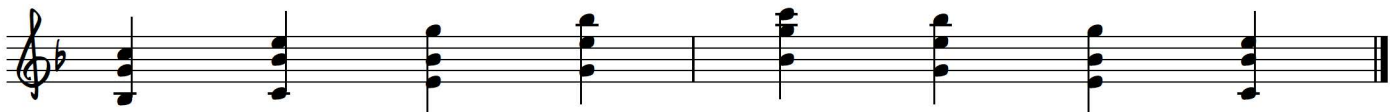
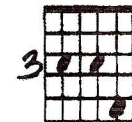
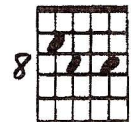
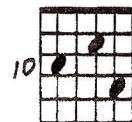
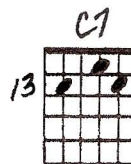
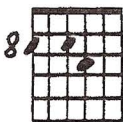
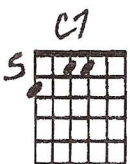
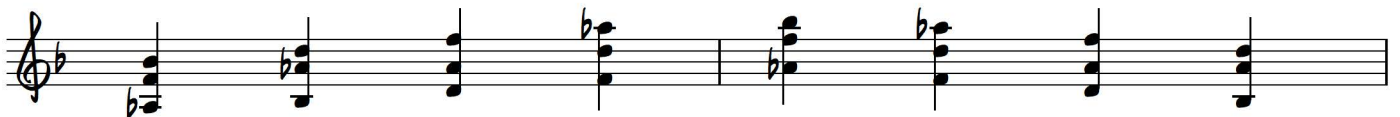
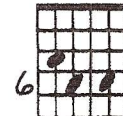
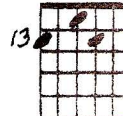
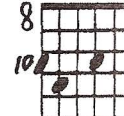
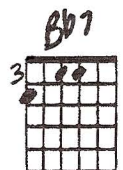
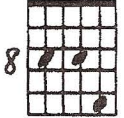
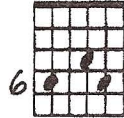
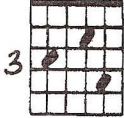
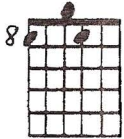
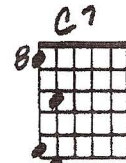
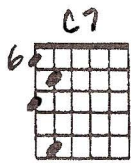
1 8 1 5

Bb7

4 3 8 6

C7 F7 Bb7

"Blues Bass - Walking" - Ted Greene, p.3



The Working Guitarist's Mini-Grid 3

(SPRING 196: Also try at DIAPY (DORIAN))

F7

C7

for "DIRECTIONAL SCALEWISE LINES" try ① long lines by "Catching the strings"

7 PACKETS of 11

Bb7's

