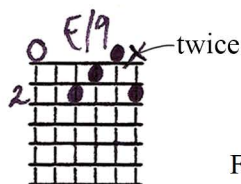


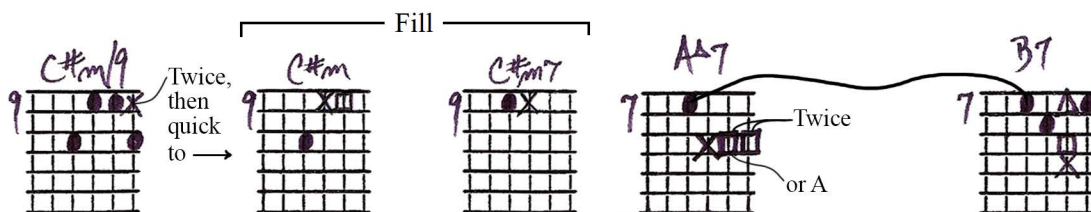
YESTERDAY

Level 1 - Key of E

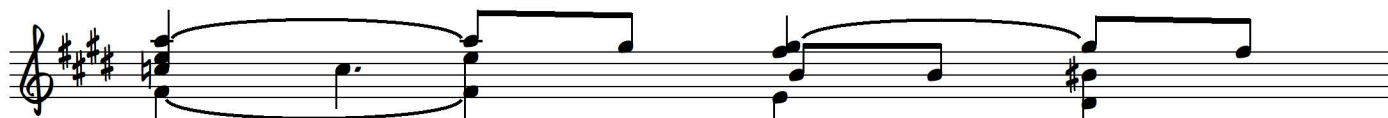
Playing order: ● × □ △
○ = opt.



1. Yes - ter - day, all my trou - bles seemed so
2. Sud - den - ly, I'm not half the mad I
3. Yes - ter - day, love was such an eas - y



3 far a - way. Now it looks as though they're
used to be. There's a shad - ow hang - ing
game to play. Now I need a place to



5 here to stay. Oh,
o - - - ver me. Oh,
hide a - way. Oh,



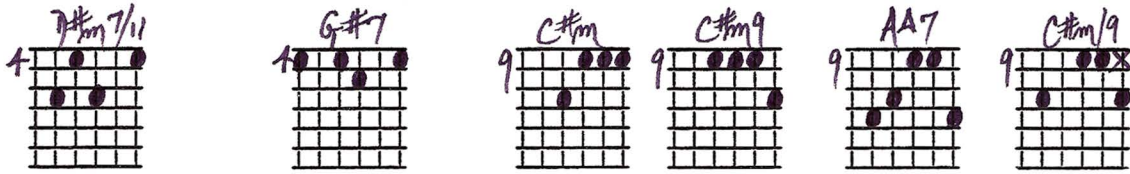
To CODA



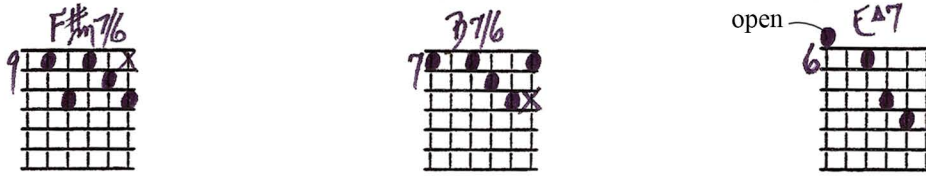
6 I be - lieve in yes - ter - day.
yes - ter - day cam sud - den - ly.
I be - lieve in yes - ter - day.

BRIDGE:

Use a "rippling" right hand in the Bridge as you did in the verse(s)

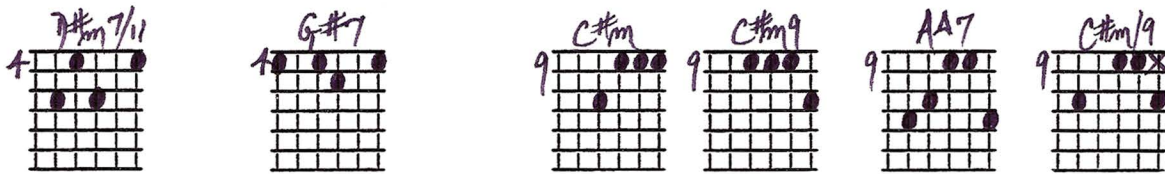


8 Why she had to go I don't

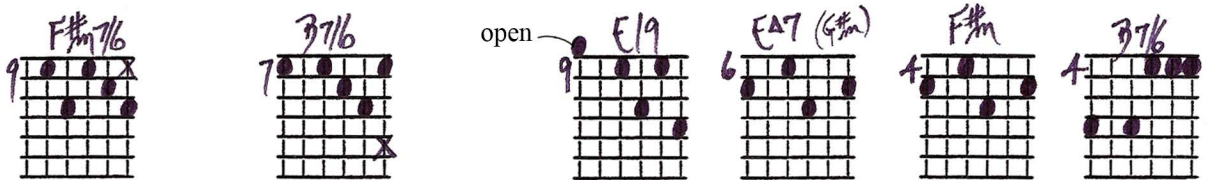


Fill

10 know, she would - n't say.



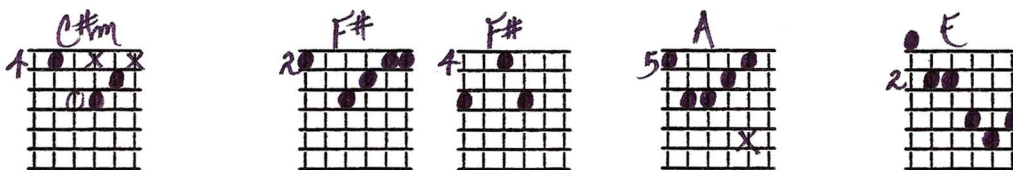
12 I said some - thing wrong, now I



D.C. AL CODA

14 long for yes - ter - day

CODA



16 Mmm mm mm mm mm.

Key of E

YESTERDAY - LENNON & MCCARTNEY

1-24-85
J. P. [unclear]

0 E19
2
Twice

4 F#m/11
Twice

6 G#7
Twice

9 G#7
Twice

9 C#m/9
Twice

9 Fill C#m
Twice

9 C#m7
Twice

7 A7
Twice

7 B7
Twice

9 Am6
Twice

9 Am6A7
Twice

9 E19
Twice

9 G#7
Twice

6 C#m
Twice

6 C#m7
Twice

6 F#
Twice

7 B11/13
Twice

4 open E
Twice

REPEAT EVERY 4th NOW

BRIDGE: USE "A PIPPLING" R.F. HAND IN THE BRIDGE AS YOU DID IN THE VERSES

4 F#m/11
Twice

4 G#7
Twice

9 C#m
Twice

9 C#m9
Twice

9 A7
Twice

9 C#m/9
Twice

9 F#m7/6
Twice

7 B7/6
Twice

6 open E7
Twice

Fill

REPEAT FROM BEGINNING OF BRIDGE TO F#m7/6

7 B7/6
Twice

9 open E19
Twice

6 E7(G#m)
Twice

4 F#m
Twice

4 B7/6
Twice

REPEAT TO TOP THEN

TAG: 4 C#m
Twice

2 F#
Twice

4 F#
Twice

5 A
Twice

2 E
Twice

Empty guitar grids for practice.

