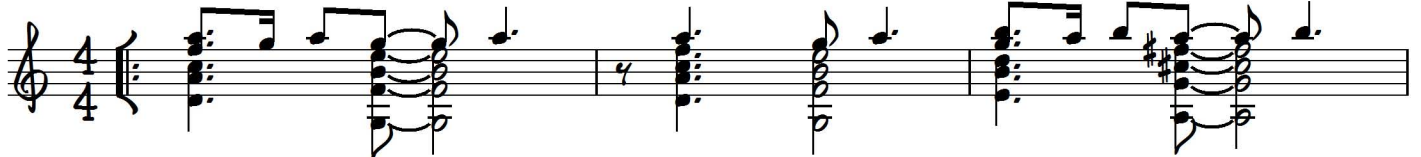
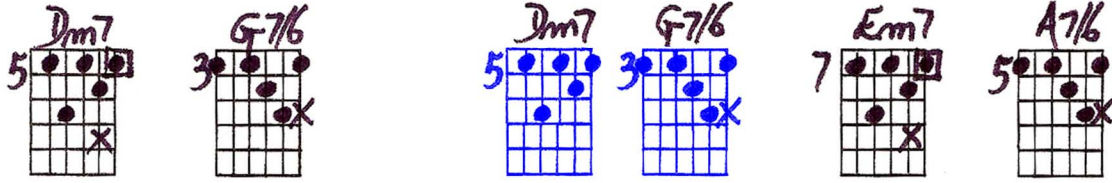


SATIN DOLL

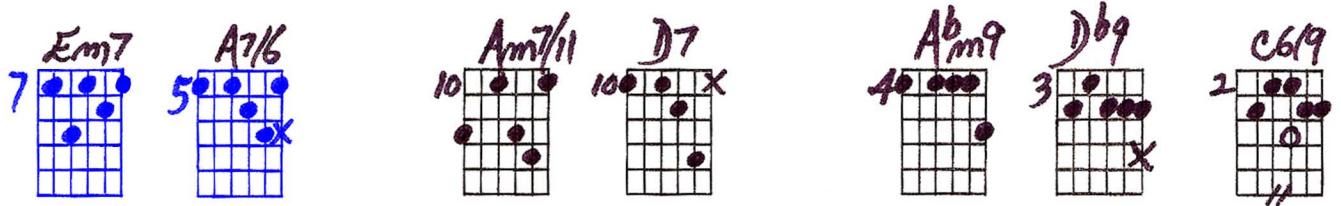
Playing order: ● × □ △
○ = opt.

Chord Melody Style - Basic Version

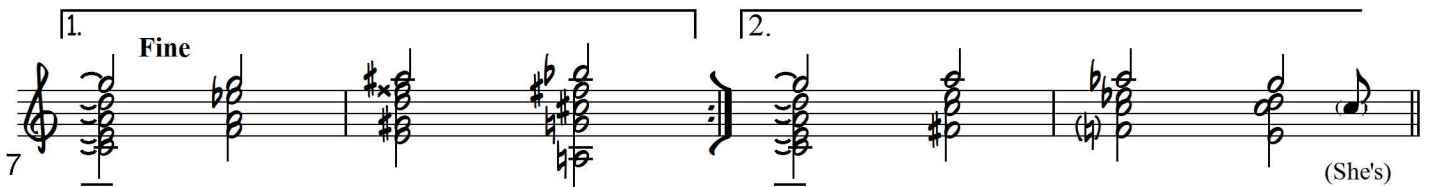
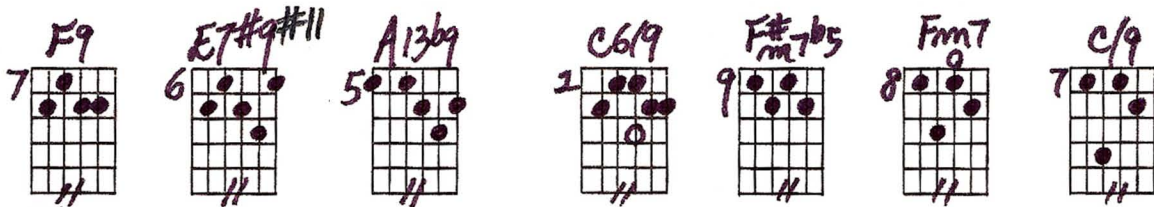
Outline format: you've got to add a melody note here and there.



1. Cig - a - rette hold er, which wigs me, o - ver her shoul - der,
2. Ba - by shall we go out skip - pin', care - ful a - mi - go,
3. Tel - e - phone num - bers, well, you know, do - in' my rhum - bas



she digs me, out cat - tin', that sat - in doll...
you're flip - pin', speaks Lat - in, that sat - in doll...
with u - no, and that - 'n my sat - in doll...



(She's)

"Satin Doll" - Ted Greene Arrangement, 1977-08-03 p.2

11

no - bo - dy's fool, so I'm play - in' it cool as can be.

14

I'll give it a whirl, but I ain't for no girl— catch-ing me.

17

D.C. al Fine

PLAYING ORDERS:
 X = after .
 □ = after X
 ○ = optional

CHORD
 MELODY
 STRIKE

SATIN DOLL

8-3-77
 arr
 © J. Greene

OUTLINE FORMAT:

You've got to add a melody note here & there

PLAY MELODY
 1 OCTAVE HIGHER
 ON GUITAR

SATIN DOLL - DUKE ELLINGTON

2-26-77

PLAY WITH JAZZ SWING FEEL
 (♩ = ♩ ♩)