

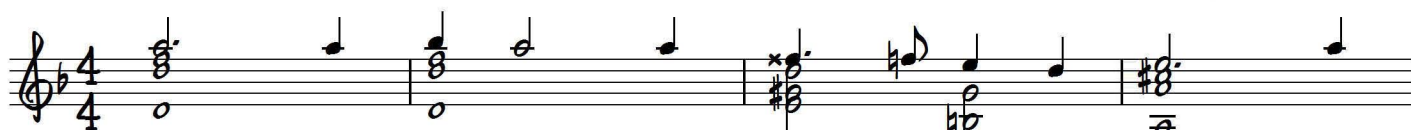
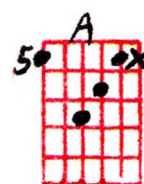
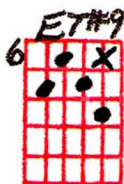
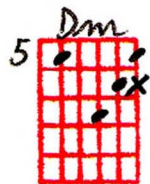
GOLDEN EARRINGS

arr. © Ted Greene
4-4-74

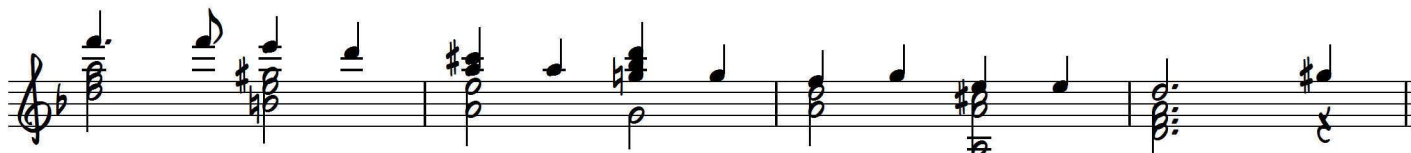
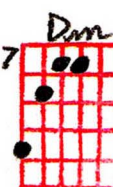
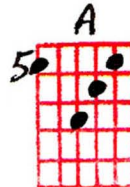
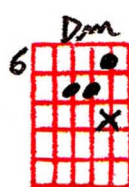
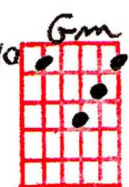
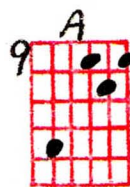
VICTOR YOUNG, 1946

Verse 1 = Ted's "Basic version."
Verse 2&3 = Ted's other version.
The bridge is same in both versions.

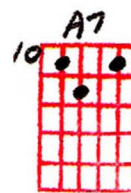
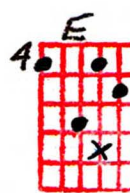
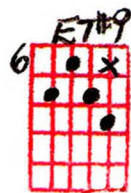
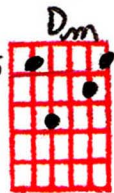
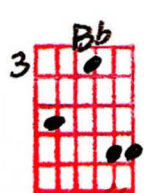
o = OPTIONAL NOTE
x = MELODIC ADDITION
~ = SUSTAIN (holdnote)



1. There's a sto - ry the gyp - sies know is true, That

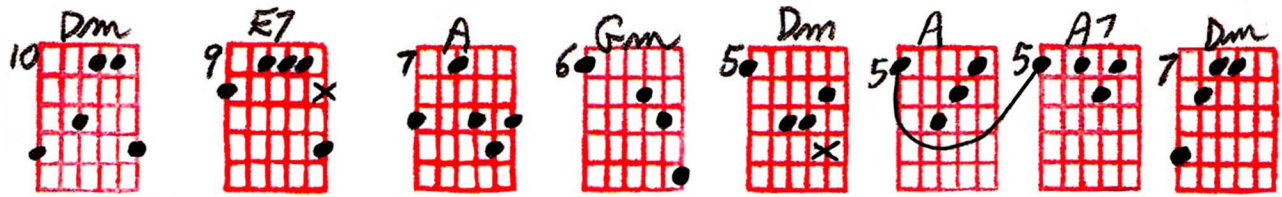


when your love wears gol - den ear - rings she be - longs to you. 2. An

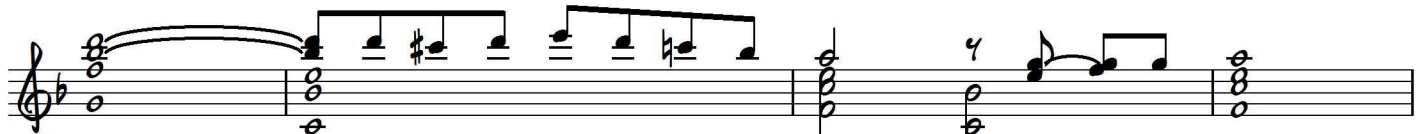


3. Be Old love sto - ry that's known to ve - ry few, But
my gyp - sy, make love your gui - ding light, And

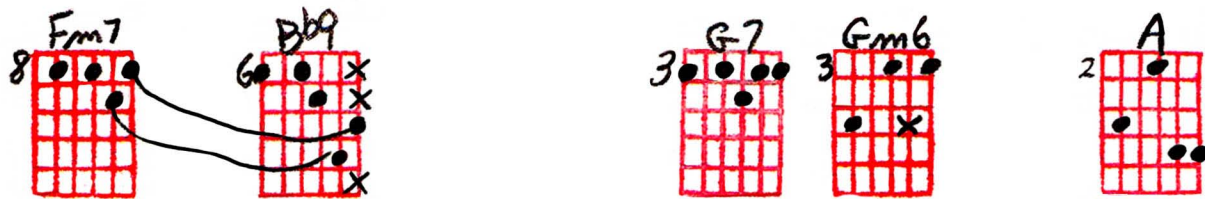
Golden Earrings - Ted Greene Arrangement, 1974-04-04 (p.2)



if you wear those gol - den ear - rings love will come to you.
 let this pair of gol - den ear - rings cast their spell to - night.



By _____ the bur - ning fi - re they will glow _____ with ev - ry coal



You _____ will hear de - si - re whis - per low _____ in - side your soul. 3. So

GOLDEN EARRINGS (BASIC VERSION)

CHORD MELODY STUDIES

GOLDEN EARRINGS

arr. © J. Vane
4-7-74

o = optional note
x = melodic addition
~ = sustain (hold down)

MOVE
MELODY UP
1 OCTAVE
FOR GUITAR

GOLDEN EARRINGS

9-3-73