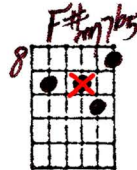
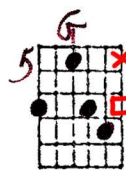
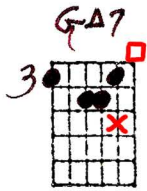


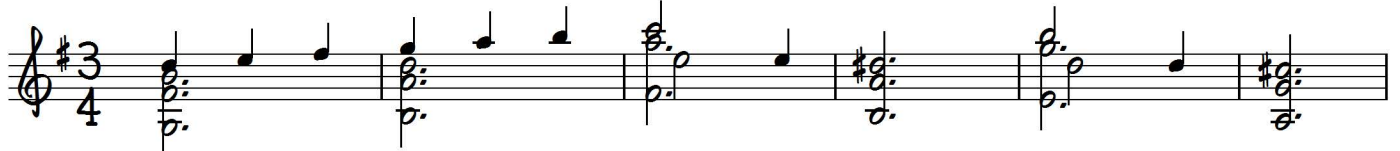
Basic Outline

Playing order: ● × □ △
○ = opt.

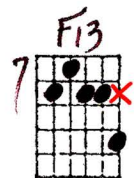
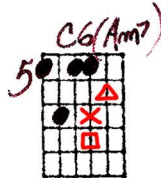
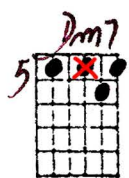
Red = melodic additions



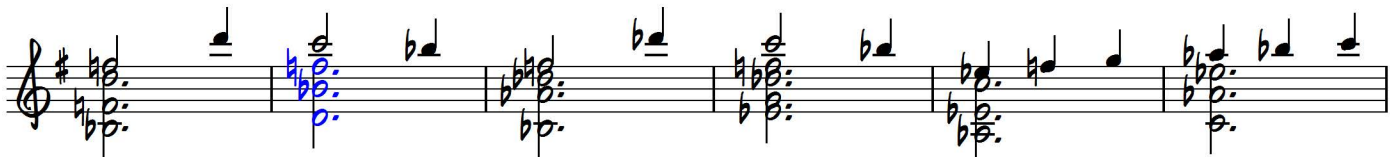
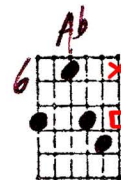
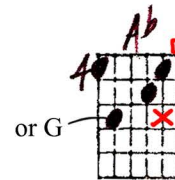
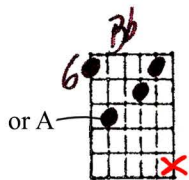
Key of G



Poor lit - tle, sad lit - tle blue Blues - ette, don't you cry,
Long as there's love in your heart to share, dear Blues - ette,

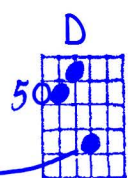
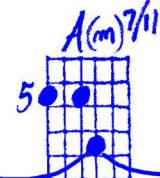
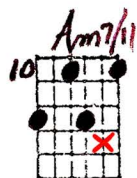


don't you fret. You can bet one luck - y day you'll wak - en
don't des - pair. Some blue boy is long - ing just like you to



and your blues will be for - sak true - en. One luck - y day love - ly
find a some - one to be true to. Two lov - ing arms he can

To Turnaround:



love will come in your way.
nest - le in and stay.

Key of G

BASIC OUTLINE

BLUESETTE

6-1-77
6-14-79
© Ted Greene

BLUESETTE - TED GREENE

8-24-77

Bluesette

[Ted Greene's Roadmap]

Key of G or Bb:

-----of vi-----|-----of V-----|-----of IV-----|-----of bIII-----|
 | I | I | ii^ø7 | V7 | ii7 | V7 | ii7 | V7 | I | I | ii7 | V7 | I | I |

-----of bII-----|
 | ii7 | V7 | I | I | ii7 | V7 | iii7 | bIII7 | ii7 | V7 ||

This song is probably more easily thought of on an intuitive level: that is just thinking Of the *interval movement* from chord to chord, as well as the chord *qualities*. Or think numbers all in home key.

(G or Bb) **BLUESETTE**: I | I | ii^ø7 | V7 | ii7 | V7 | ii7 | V7 | I | I | ii7 | V7 | I | I | ii7 | V7 | I | I | ii7 | V7 | iii7 | bIII7 | ii7 | V7 |

this song is probably more easily thought of on an intuitive level: that is just thinking of the interval movement from chord to chord, as well as the chord qualities. Or think numbers all in home key.