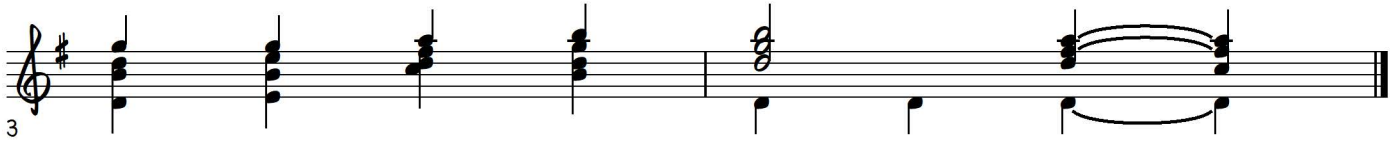
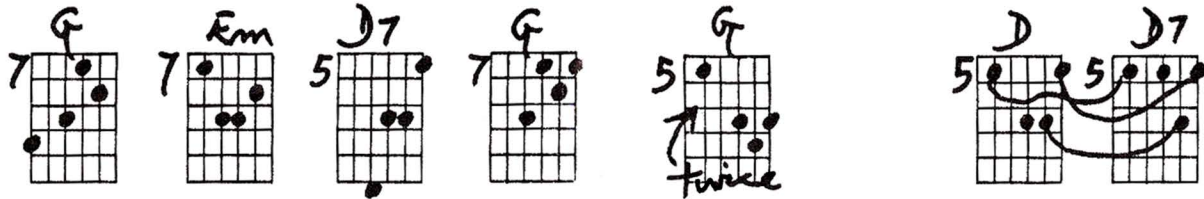
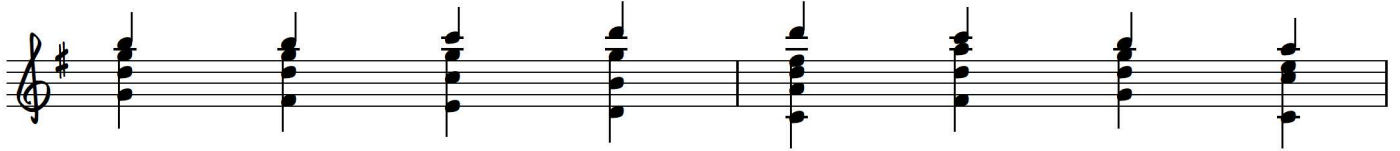
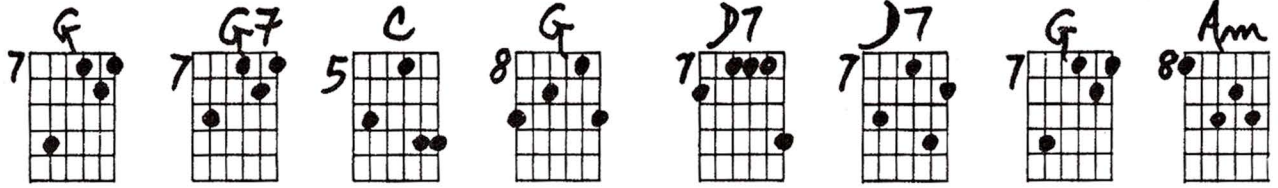


# Beethoven's 9th

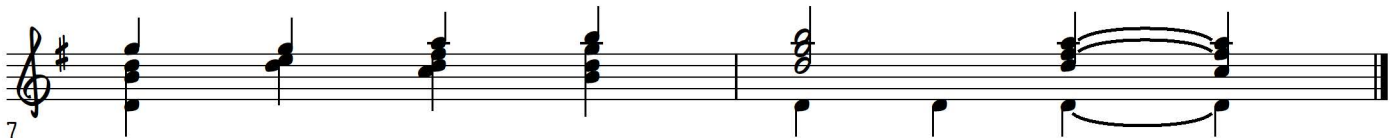
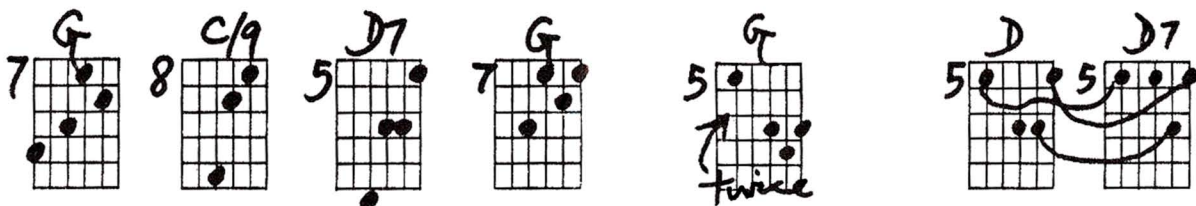
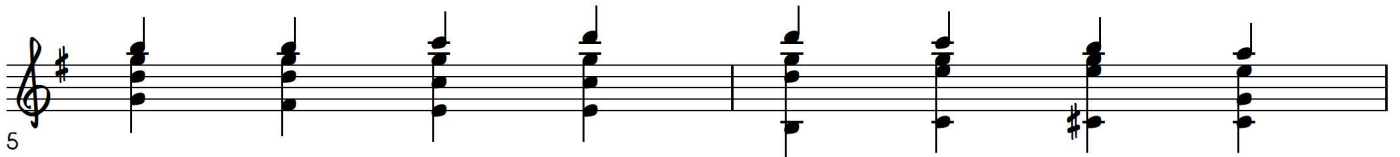
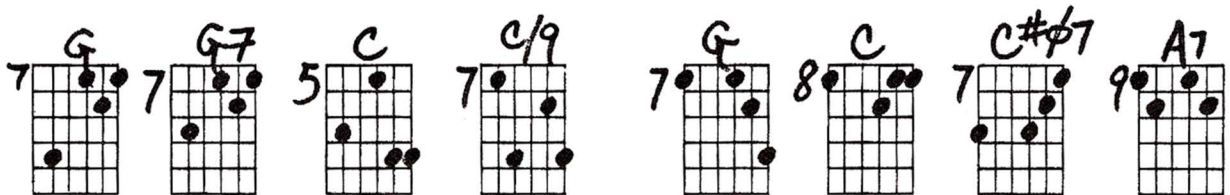
Playing order: ● × □ △  
○ = opt.

(Ode to Joy)  
1st Verse

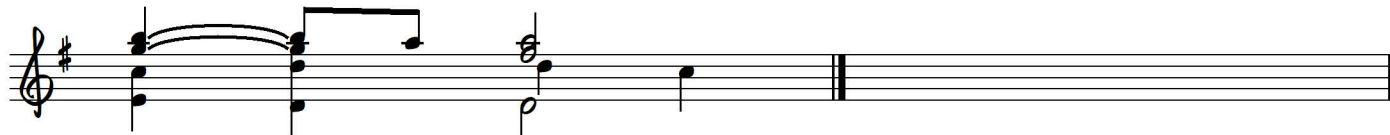
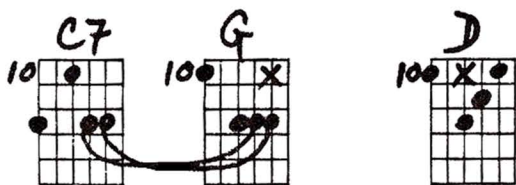
1st verse:



Alternate #1  
1st verse:

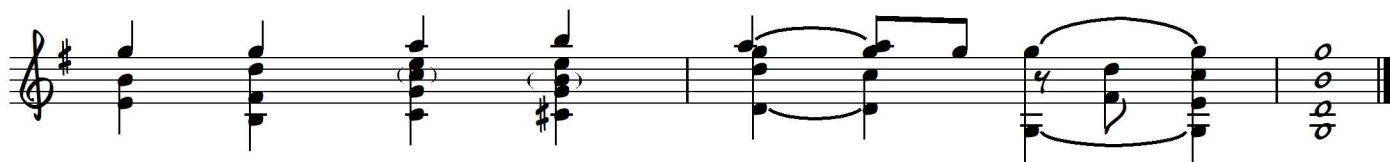
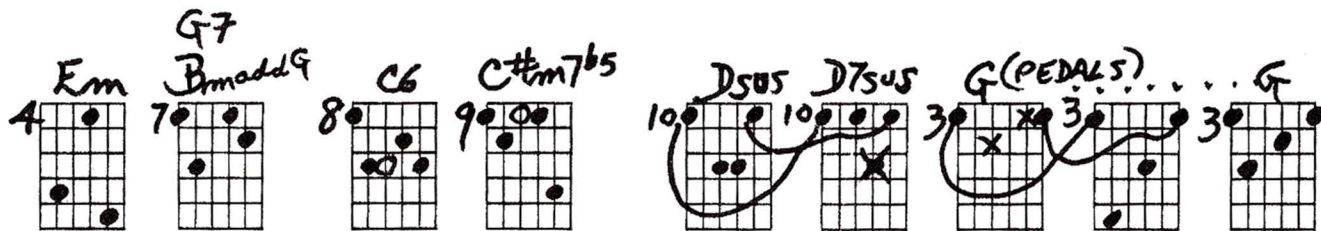
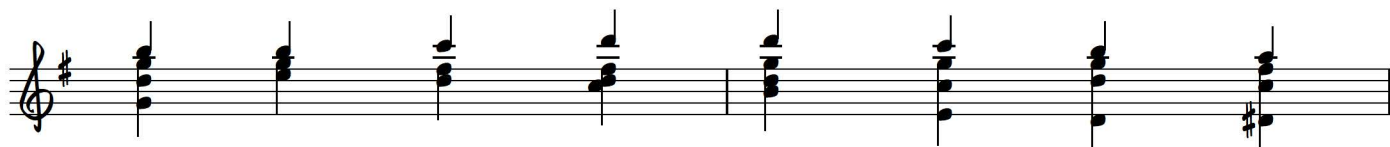
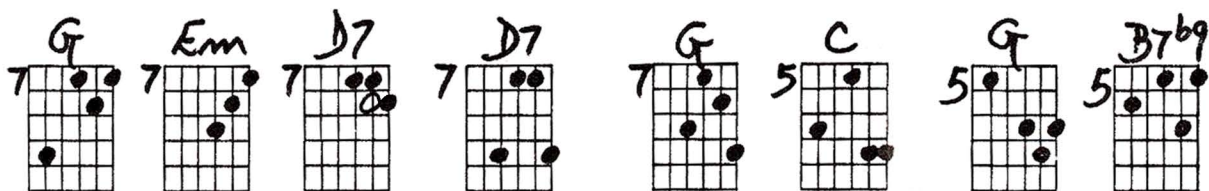


OR



Alternate #2  
1st verse:

or C/q



# BEETHOVEN'S 9th

1st VERSE

Handwritten guitar chord diagrams for the first line of the first verse. The chords are: G, G7, C, G, D7, D7, G, Am, G, Em, D7, G.

Handwritten guitar chord diagrams for the second line of the first verse. The chords are: G, D, D7, followed by 10 empty grid boxes.

ALTERNATE 1st VERSE

Handwritten guitar chord diagrams for the alternate first line of the first verse. The chords are: G, G7, C, C/9, G, C, C#F7, A7, G, C/9, D7, G.

Handwritten guitar chord diagrams for the second line of the alternate first verse. The chords are: G (with 'etc as above' and 'twice' written), C7, G, D, G, Em, D7, D7, G, C.

Handwritten guitar chord diagrams for the third line of the alternate first verse. The chords are: G, B7b9, Em, F7, Bmadd9, C6, C#m7b5, Dsus, D7sus, G (PEDALS?), G.

A grid of 20 empty guitar chord diagrams arranged in 4 rows and 5 columns, intended for the second and third verses of the piece.