

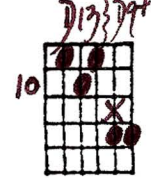
AIN'T MISBEHAVIN'

Harmonized Melody

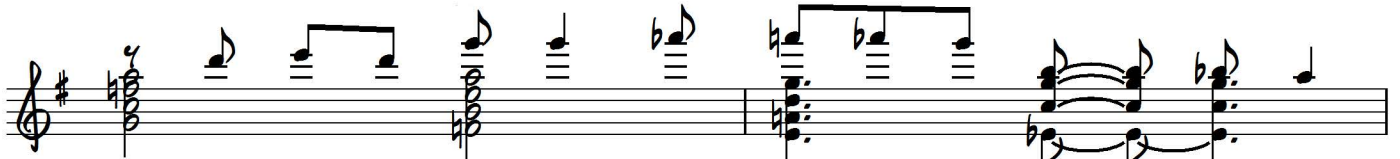
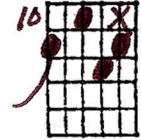
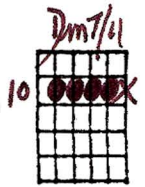
Playing order: ● X □ △
○ = opt.

Ensemble setting or solo.
Modern piano voicings and others.

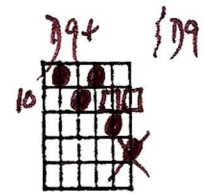
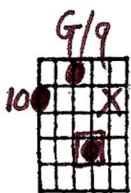
Key of G



1. No one to talk with, all by my - self,
3. I don't stay out late, don't care to go,



no one to walk with, but I'm hap - py on the shelf.
I'm home a - bout eight, just me and my ra - di - o,



Ain't Mis - be - hav - in' I'm sav - in' my love for

Handwritten guitar chord diagrams for the first line of music. The chords are: $B7/6^{sus}$, $B7\#9+$, $E11$, $open\ E7b9+$, $A13^{sus}$, $A7$, $D13^{sus}$, and $D7b9+$. Each diagram shows the fretboard with fingerings and 'X' marks for muted strings.

Musical notation for the first line, corresponding to the chords above. The lyrics "you. —" are written below the staff.

Handwritten guitar chord diagrams for the second line of music. The chords are: $G\Delta7$, $G6$, $E7b9$, $A7/6$, $A9+$, $D13^{sus}$, and $D7b9$. Fingerings and string muting are indicated.

Musical notation for the second line, corresponding to the chords above.

2. I know for cer - tain, the one I love,

Handwritten guitar chord diagrams for the third line of music. The chords are: $G\Delta7$, $G7/6^{sus}$, $G7/6$, $G7+$, $C6/9$, $F13\#11$, and $F7$. Fingerings and string muting are indicated.

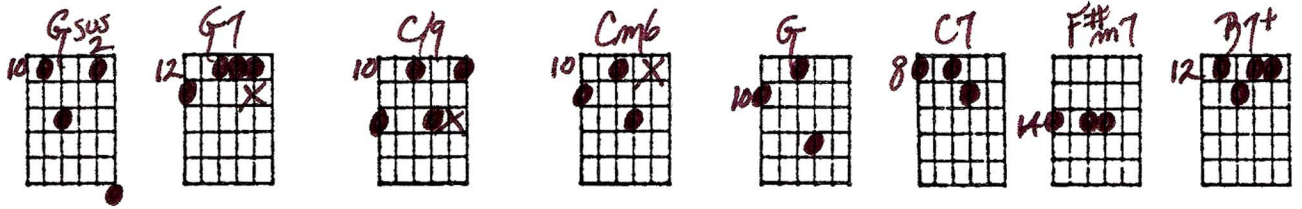
Musical notation for the third line, corresponding to the chords above.

I'm thru with flirt - in', it's just you I'm think - in' of,

Handwritten guitar chord diagrams for the fourth line of music. The chords are: $C\#7$, $Cm7/6$, $D7\#9+$, $open\ E9$, $A7^{sus}$, $E7+$, $D11$, and $D9+$. Fingerings and string muting are indicated.

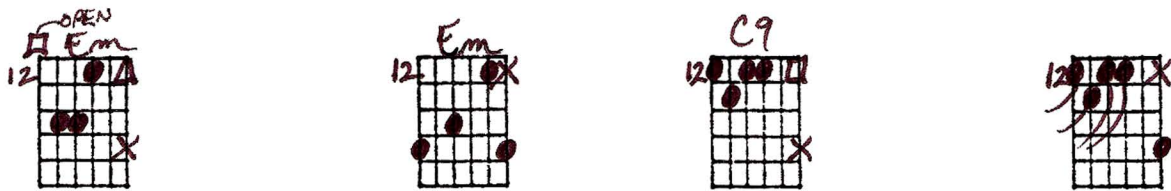
Musical notation for the fourth line, corresponding to the chords above.

Ain't Mis - be - hav - in' I'm sav - in' my love for

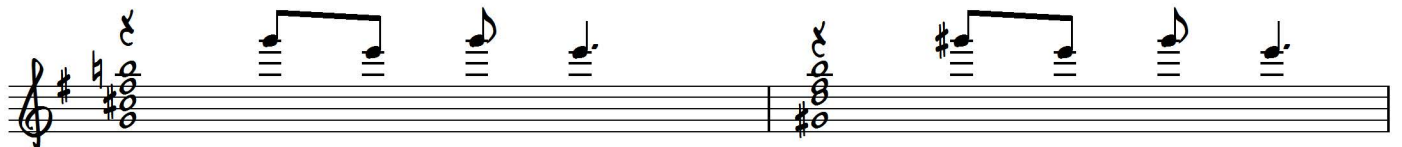
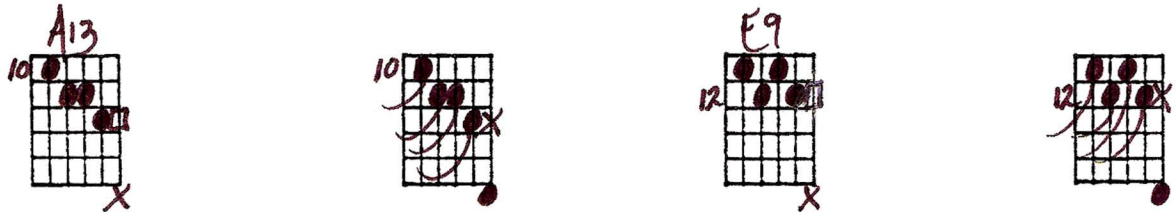


you. —

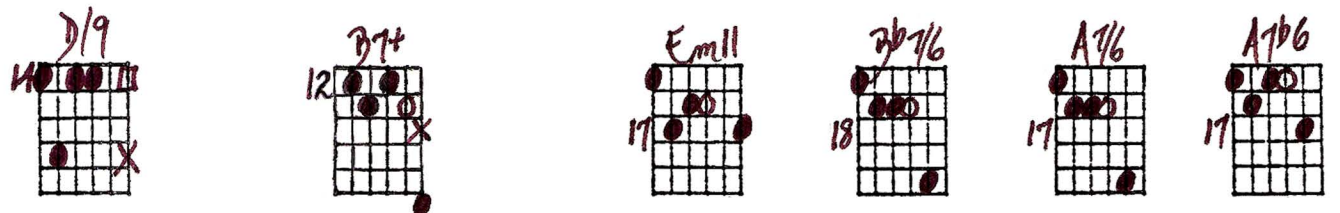
Bridge:



Like Jack Hor - ner in the cor - ner,



don't go no - where, what do I care?

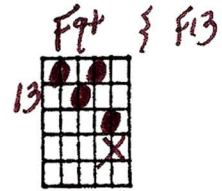
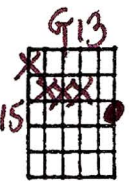


Your kiss - es are worth wait - ing

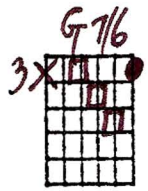
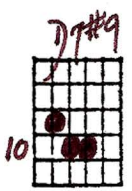
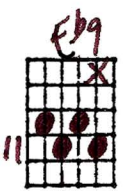


for, be - - - lieve me. D.C. al Coda

Coda



you. _____



ENSEMBLE SETTING
or SOLO
MODERN PIANO VOICINGS
and others

HARMONIZED
MELODY

AINT MISBEHAVIN' - FATS WALLER

SH-3-85
Ted Greene

Key of G
G^{SUS}2

F#m9

A7/6

D13sus4

Dm7/11

G13

C6/9

F9#11

G/9

F7b9#11

Hit on A Bass from 10

A7

B9+11

B7/6sus4

B7#9+

E11

F7b9+

A13sus4

A7

D13sus4

D7b9+

G9

G6

F7b9

A/6

A9+

D13sus4

D7b9

G9

G7/6sus4

G/6

G7+

C6/9

F9#11

C7

Cm7/6

B7#9+

open E9

A7sus4

Fb7+

D11

D9+

Gsus2

G7

C9

Cmb

G7

C7

F#m7

B7+

PRIVILEGE OPEN E7m

E7m

C9

A13

E9

D/9

B7+

E7m11

Bb7/6

A/6

A7b6

D9

E13

A13

D9

D.C. al CODA

D.C. al CODA

D.C. al CODA

G13

G7#9

C9

F9#11

Fb9

D7#9

G7/6